

A GENERAL FRAMEWORK FOR NONLOCAL NEUMANN PROBLEMS

GUY FOGHEM AND MORITZ KASSMANN

ABSTRACT. Within the framework of Hilbert spaces, we solve nonlocal problems in bounded domains with prescribed conditions on the complement of the domain. Our main focus is on the inhomogeneous Neumann problem in a rather general setting. We also study the transition from complement value problems to local boundary value problems. Several results are new even for the fractional Laplace operator. The setting also covers relevant models in the framework of peridynamics.

1. INTRODUCTION

1.1. Main Results. Over the last years, there have been several studies of nonlocal Neumann problems of the following type: Given a bounded open set $\Omega \subset \mathbb{R}^d$, one is interested in well-posedness for

$$Lu = f \text{ in } \Omega, \quad \mathcal{N}u = g \text{ on } \mathbb{R}^d \setminus \Omega, \quad (N)$$

where L is an integral or integro-differential operator and \mathcal{N} is a related integral operator, which plays the role of some kind of normal derivative on $\mathbb{R}^d \setminus \Omega$. The main goal of this article is to prove well-posedness results for (N) in a general setting. We assume:

$$\begin{aligned} Lu(x) &= \text{p.v.} \int_{\mathbb{R}^d} (u(x) - u(y))k(x, y)dy & (x \in \mathbb{R}^d), \\ \mathcal{N}u(y) &= \int_{\Omega} (u(y) - u(x))k(x, y)dx & (y \in \Omega^c). \end{aligned}$$

Here, $k : \mathbb{R}^d \times \mathbb{R}^d \setminus \text{diag} \rightarrow [0, \infty)$ is measurable and satisfies

$$\Lambda^{-1}\nu(y - x) \leq k(x, y) \leq \Lambda\nu(y - x) \quad (x, y \in \mathbb{R}^d), \quad (E)$$

where $\nu : \mathbb{R}^d \setminus \{0\} \rightarrow [0, \infty)$ is the density of a symmetric Lévy measure, i.e., ν satisfies

$$\nu(h) = \nu(-h) \text{ for all } h \neq 0 \quad \text{and} \quad \int_{\mathbb{R}^d} (1 \wedge |h|^2)\nu(h)dh < \infty. \quad (L)$$

The main new contributions of the present article include the following:

- (a) Extending previous results, e.g. from [DROV17], [MPL19], [DTZ22], we treat the inhomogeneous problem for natural choices of data g . The corresponding results are new for the fractional Laplace Operator.
- (b) We provide a general framework that includes integral and singular kernels at the same time.

2010 *Mathematics Subject Classification.* 28A80, 35J20, 35J92, 46B10, 46E35, 47A07, 49J40, 49J45.

Key words and phrases. Neumann problem, nonlocal Sobolev spaces, integro-differential operators, integro-differential equations, Dirichlet forms.

Financial support by the DFG via IRTG 2235: “Searching for the regular in the irregular: Analysis of singular and random systems” is gratefully acknowledged. Guy Foghem gratefully acknowledges financial support by the DFG via the Research Group 3013: “Vector-and Tensor-Valued Surface PDEs”.

- (c) We show that the trace spaces introduced in [DK20] and [BGPR20] coincide.
- (d) We introduce a new Dirichlet-to-Neumann operator based on the operator \mathcal{N}
- (e) Our well-posedness results are in align with classical results for second order partial differential operators. We show convergence of nonlocal to local problems, where we treat singular and bounded kernels together.

Let us explain condition (E). We denote $a \wedge b = \min(a, b)$ for $a, b \in \mathbb{R}$. In the case $k(x, y) = \nu(y - x)$ with ν as above, the operator L is translation invariant and generates a symmetric Lévy process. The density ν defines the “order” of the operator L , which becomes apparent in the case of $\nu(h) = C_{d,\alpha}|h|^{-d-\alpha}$ for $h \neq 0$ where $\alpha \in (0, 2)$ is fixed and $C_{d,\alpha}$ is an appropriate constant. The resulting operator is the so called fractional Laplace operator $(-\Delta)^{\alpha/2}$. The choice of $C_{d,\alpha}$ ensures the relation $(-\Delta)^{\alpha/2}u(\xi) = |\xi|^\alpha \widehat{u}(\xi)$ for all functions u in $C_c^\infty(\mathbb{R}^d)$. Let us mention that asymptotically one has $C_{d,\alpha} \asymp \alpha(2 - \alpha)$. This will play an important role for our analysis. Further details about the fractional Laplacian $(-\Delta)^{\alpha/2}$ and the constant $C_{d,\alpha}$ can be found in [NPV12, FG20]. Finally, let us mention that, the assumptions (E) and (L) are not sufficient in order to guarantee the existence of the pointwise expression $Lu(x)$ in the general case, even if u is smooth. The Hilbert space approach used in Section 4 avoids this issue because we only deal with the corresponding quadratic forms. It is worth to mention that the nonlocal operator \mathcal{N} was initially introduced by [DROV17] and is called the *nonlocal normal derivative operator* across the boundary of Ω with respect to ν . Another type of such an operator appeared earlier in literature see for instance [DGLZ12].

Let us quickly review the classical Neumann problem, for the reader’s convenience. Let $\Omega \subset \mathbb{R}^d$ be a bounded open subset whose boundary $\partial\Omega$ is sufficiently regular. Given $f : \Omega \rightarrow \mathbb{R}$ and $g : \partial\Omega \rightarrow \mathbb{R}$ measurable, the classical inhomogeneous Neumann problem associated to the data f and g consists in finding a function $u : \Omega \rightarrow \mathbb{R}$ satisfying

$$-\Delta u = f \quad \text{in } \Omega \quad \text{and} \quad \frac{\partial u}{\partial n} = g \quad \text{on } \partial\Omega. \quad (1.1)$$

Here $\frac{\partial u}{\partial n}$ denotes the outward normal derivative of u on $\partial\Omega$. It is interesting to note that the Neumann boundary problem has received considerably less attention in the literature when compared with the Dirichlet boundary problems. Classical textbooks like [Mik78] treat the basic aspects. A rigorous treatment including regularity up to the boundary, Schauder estimates, L^p estimates and the variational formulation can be found in the lecture notes [Leo13]. A recent article covering classical results for elliptic equations in divergence form is [DV09].

Following [FKV15, SV14] we introduce a bilinear form \mathcal{E} by

$$\mathcal{E}(u, v) = \frac{1}{2} \iint_{(\Omega^e \times \Omega^e)^c} (u(x) - u(y))(v(x) - v(y)) \nu(x - y) dx dy \quad (1.2)$$

for all smooth functions with compact support. As in the local case, a main tool in the study of Neumann problems, is a Gauss-Green type formula for $u, v \in C_c^\infty(\mathbb{R}^d)$, see Proposition A.5:

$$\int_{\Omega} Lu(x)v(x)dx = \mathcal{E}(u, v) - \int_{\Omega^e} \mathcal{N}u(y)v(y)dy. \quad (1.3)$$

Relation (1.3) motivates us to introduce an energy space $V_\nu(\Omega|\mathbb{R}^d)$ as the vector space of all measurable functions $u : \mathbb{R}^d \rightarrow \mathbb{R}$ such that the restriction $u|_\Omega$ belongs to $L^2(\Omega)$ and $\mathcal{E}(u, u)$ is finite. See Section 2.2 for more details. The energy space $V_\nu(\Omega|\mathbb{R}^d)$ can be seen as a nonlocal analog of $H^1(\Omega)$. Let us make an interesting observation. Let $f \in L^2(\Omega)$ and $u \in V_\nu(\Omega|\mathbb{R}^d)$ be a minimizer of the functional $v \mapsto \frac{1}{2} \mathcal{E}(v, v) - \int_\Omega f v$ in the space $V_\nu(\Omega|\mathbb{R}^d)$. Then $\mathcal{E}(u, v) = 0$ for all smooth functions with compact support in $\mathbb{R}^d \setminus \overline{\Omega}$. Since $u, v \in V_\nu(\Omega|\mathbb{R}^d)$, the Fubini theorem implies

$$\int_{\Omega^c} \mathcal{N}u(y)v(y)dy = \mathcal{E}(u, v) = 0,$$

which implies $\mathcal{N}u = 0$ in Ω^c , see Corollary 4.8. On the one hand, this observation is in align with the classical theory where the normal derivative appears naturally when minimizing the energy. On the other hand, and this is interesting, here we do not need to assume any regularity of the kernel $k(x, y)$ and the boundary $\partial\Omega$.

Let us summarize the main results of this work.

- (i) The first step is to define a base space $L^2(\mathbb{R}^d; \tilde{\nu})$, in which we can define the complement value problems. We define $\tilde{\nu}$ and two alternative options $\bar{\nu}, \nu^*$ in Definition 2.14. In Section 2.2 we study embedding results of corresponding function spaces.
- (ii) The next step is to introduce $T_\nu(\Omega^c)$ as the trace space of $V_\nu(\Omega|\mathbb{R}^d)$ in Section 2.6. In this section, we study equivalent norms of the trace space and a density result.
- (iii) An important tool in the proof of well-posedness results is the compact embedding $V_\nu(\Omega|\mathbb{R}^d) \hookrightarrow L^2(\Omega)$, which is a core result in Section 3, see Theorem 3.10.
- (iv) Section 4 is dedicated to well-posedness results. We focus on the Neumann problem in Section 4.1. An existence result for problem (N) is given in Theorem 4.11. We also discuss a more general Robin-type complement value problem.
- (v) The setup of this work allows to define a fully nonlocal Dirichlet-to-Neumann map with the help of the nonlocal Neumann-type derivative \mathcal{N} . For $\Omega \subset \mathbb{R}^d$, the Dirichlet data are given on Ω^c and mapped to $\mathcal{N}u$ on Ω^c , where u satisfies the nonlocal equation in Ω . Thus, this map is a nonlocal analog of the well-known Dirichlet-to-Neumann operator given in [CS07]. Basic properties are formulated in Theorem 4.19 together with spectral properties in Theorem 4.22.
- (vi) The analogy between the classical Neumann problem and problem (N) leads to a convergence result when considering a sequence of complement value problems for the fractional Laplace operator $(-\Delta)^{\frac{\alpha_n}{2}}$ where $\alpha_n \rightarrow 2$. Theorem 5.4 establishes the convergence of the corresponding sequence of solutions u_{α_n} .

1.2. Related literature. Nonlocal complements value problems have been studied in several works. In particular, the Dirichlet problem is studied in many articles. For translation invariant problems, see the survey [RO16, AFNRO20] for fine regularity results and [FKV15, BV16] for the Hilbert space approach in a similar setting as in this work.

An early contribution to nonlocal Neumann problems is [DROV17], where also the Gauss-Green formula appears for a special case. There is a difference between our approach and the one in [DROV17], which explains why we are able to study the inhomogeneous Neumann problem. Let us explain our approach for the simplest setup of the fractional Laplace operator $(-\Delta)^{\alpha/2}$, i.e., $\nu(h) = C_{d,\alpha}|h|^{-d-\alpha}$. Given $f \in L^2(\Omega)$ and $g \in L^2(\Omega^c; (1+|x|)^{d+\alpha}dx)$, motivated

by the Gauss–Green formula (1.3) we say that $u \in V_\nu(\Omega | \mathbb{R}^d)$ is a weak solution or a variational solution of the inhomogeneous Neumann problem (N) if

$$\mathcal{E}(u, v) = \int_{\Omega} f(x)v(x)dx + \int_{\Omega^c} g(y)v(y)dy \quad \text{for all } v \in V_\nu(\Omega | \mathbb{R}^d). \quad (V)$$

By testing (V) with $v = 1$ gives the following necessary compatibility condition

$$\int_{\Omega} f(x)dx + \int_{\Omega^c} g(y)dy = 0. \quad (C)$$

Equality (V) should be contrasted with the variational formulation of (1.1) in the classical case: Given $f \in L^2(\Omega)$ and $g \in L^2(\partial\Omega)$, find $u \in H^1(\Omega)$ such that

$$\int_{\Omega} \nabla u(x) \cdot \nabla v(x)dx = \int_{\Omega} f(x)v(x)dx + \int_{\partial\Omega} g(y)v(y)d\sigma(y) \quad \text{for all } v \in H^1(\Omega).$$

Note that [DROV17, Def. 3.6] and subsequent definitions like [MPL19, Definition 2.7] look very similar to (V) at first glance. However, the norm of the test space defined in [DROV17, Eq. (3.1)], [MPL19, Section 2] depends on the Neumann data g , which is not natural. Our test space $V_\nu(\Omega | \mathbb{R}^d)$ in the weak formulation (V) does not depend on the Neumann data g . For the general case, we refer the reader to Definition 4.3.

The aforementioned issue does not show up for *homogeneous* nonlocal Neumann problems. For such problems, several results have been proved, e.g., regularity up to a boundary of a domain for the fractional Laplace operator in [AFNRO20]. An particular observation linking the homogeneous Neumann problem to the regional fractional Laplace operator is provided in [Aba20]. Eigenvalues of nonlocal mixed problems are studied in [LMP+18]. Various nonlinear Neumann problems are studied in [Che18, MPL19, CC20, ATL20, MPL21, BS21]. Some higher order nonlocal Neumann problems are treated in [BMPS18]. The classical Neumann problem is closely linked to reflected diffusions. It turns out to be a challenging problem to establish a similar link between the nonlocal Neumann problem and a Markov jump process together with its reflection. An attempt is made in [Von21], which we comment on in detail in Remark 2.37.

1.3. Peridynamics and volume constraints on bounded sets.

In the literature, several nonlocal problems are studied in the area of peridynamics. Most of these models require complement conditions (a.k.a. volume constraints) not necessarily on the whole complement of the domain Ω but only often on a part of the complement. Here, we would like to point out that our setting can be adapted to fit such requirements. Let us exemplify this with a simple model. Consider the symmetric kernel of the form $k(x, y) = \nu(x - y)$ with ν supported around the origin, say $\text{supp } \nu \subset B_\delta(0)$ for some $\delta > 0$. A popular example of a kernel in peridynamic models is given by $\nu(h) = \mathbb{1}_{B_\delta}(h)$. In this case it is natural to assume the complement condition not on the whole complement $\mathbb{R}^d \setminus \Omega$ but only on $\Omega(\delta) = \{x \in \mathbb{R}^d \setminus \Omega : \text{dist}(x, \partial\Omega) < \delta\}$. A nonlocal problem of the form $Lu = f$ in Ω is then supplemented with a complement condition prescribed on the volume constraint $\Omega(\delta)$, e.g., $u = g$ on $\Omega(\delta)$ for a Dirichlet problem or $\mathcal{N}u = g$ on $\Omega(\delta)$ for a Neumann problem. Here, $f : \Omega \rightarrow \mathbb{R}$ and $g : \Omega(\delta) \rightarrow \mathbb{R}$ are given data. Our approach can easily be adopted to cover this case. In comparison to the weak formulation (V), one would need to replace $V_\nu(\Omega | \mathbb{R}^d)$ by the space $V_\nu(\Omega | E)$ defined as in (2.3), with $E = \Omega \cup \Omega(\delta)$ and recall that

$\nu(h) = \mathbb{1}_{B_\delta}(h)$. Indeed, assuming for simplicity that Ω is bounded Lipschitz and connected, the well-posedness of the Neumann and the Dirichlet problem can be formulated as follows.

Corollary 1.1. *Let $f \in L^2(\Omega)$ and $g \in L^2(\Omega(\delta))$. Then there is a unique variational solution $u \in V_\nu(\Omega|E)^\perp = V_\nu(\Omega|E) \cap \{\int_\Omega u dx = 0\}$ to the Neumann problem $Lu = f$ in Ω and $\mathcal{N}u = g$ on $\Omega(\delta)$, i.e.,*

$$\mathcal{E}(u, v) = \int_\Omega f(x)v(x)dx + \int_{\Omega(\delta)} g(y)v(y)dy \quad \text{for all } v \in V_\nu(\Omega|E)^\perp. \quad (1.4)$$

Moreover, there is a constant $C > 0$ independent on f and g such that

$$\|u\|_{V_\nu(\Omega|E)} \leq C(\|f\|_{L^2(\Omega)} + \|g\|_{L^2(\Omega(\delta))}).$$

Corollary 1.2. *Let $f \in L^2(\Omega)$ and $g \in V_\nu(\Omega|E)$. Then there is a unique variational solution $u \in V_\nu(\Omega|E)$ to the Dirichlet problem $Lu = f$ in Ω and $u = g$ on $\Omega(\delta)$, i.e.,*

$$u - g \in V_{\nu,0}(\Omega|E) \quad \text{and} \quad \mathcal{E}(u, v) = \int_\Omega f(x)v(x)dx \quad \text{for all } v \in V_{\nu,0}(\Omega|\mathbb{R}^d). \quad (1.5)$$

Here we denote $V_{\nu,0}(\Omega|E) = V_\nu(\Omega|E) \cap \{u|_{\Omega(\delta)} = 0\}$. Moreover, there is a constant $C > 0$ independent on f and g such that

$$\|u\|_{V_\nu(\Omega|E)} \leq C(\|f\|_{L^2(\Omega)} + \|g\|_{V_\nu(\Omega|E)}).$$

The proofs of [Corollary 1.1](#) and [Corollary 1.2](#) are analogous to the ones of [Theorem 4.11](#) and [Theorem 4.17](#). Both results are well known for special cases of ν in the area of peridynamics, see [[DTZ22](#), Section 3.2] and [[KMS19](#)]. We refer the reader to the exposition and the references in [[Du19](#)]. Let us mention some related results. An early work is [[BT10](#)] where several nonlocal complement value problems are studied for integrable kernels with fixed support (horizon). Problems for nonlocal nonlinear problems involving nonlocal operators of regional type are studied in [[BM14](#), [BMCP15](#)]. Nonlocal Dirichlet problems driven by nonsymmetric singular kernels are considered in [[FKV15](#)] for scalar functions and in [[KMS19](#)] for vector-valued functions. The vanishing-horizon limit has been considered in several works, see [Section 5](#). For references related to numerical results see [[DY21](#)]. We provide Γ -convergence results for vanishing horizons in [Example 5.2](#) and mention related results from peridynamics. Our systematic approach in terms of functional analysis allows to treat general cases of ν resp. general data g in comparison with [[DTZ22](#)].

The paper is organized as follows. In [Section 2](#) we introduce some nonlocal function spaces and the corresponding trace spaces that will be used in the sequel. In [Section 3](#) we establish global compact embedding of nonlocal Sobolev spaces in to L^2 -spaces. This allows us to prove Poincaré type inequalities for various ranges of Lévy integrable kernel ν . The [Section 4](#) is devoted to the study of the well-posedness of nonlocal problems with Dirichlet, Neumann and Robin conditions associated with the Lévy operator L . Afterwards, we investigate the Dirichlet-to-Neumann map for the Lévy operator L . In [Section 5](#) we show local elliptic problems can be viewed as the limit of the nonlocal ones. Last, in [Appendix A](#) we highlight some elementary properties of the Lévy operator L .

Acknowledgment: During his PhD studies Guy Foghem has spent a research stay at Seoul National University in the framework of the International Research Training Group 2235 “Searching for the regular in the irregular: Analysis of random and singular systems” between

Bielefeld University and Seoul National University. The authors thank his host, Prof. Ki-Ahm Lee, for helpful discussions on trace spaces.

Further remarks: Several results of this work are based on the PhD thesis of the first author [FG20]. Related research questions are subject to an ongoing PhD project of Michael Vu from Trier University. Equivalent norms of the trace space $T_\nu(\Omega^c)$ in case of the fractional Laplace operator have recently been identified by F. Grube and Th. Hensiek together with convergence results that recover $H^{1/2}(\partial\Omega)$ in the limit $\alpha \rightarrow 2^-$.

2. LÉVY MEASURES AND NONLOCAL FUNCTION SPACES

In this section we introduce generalized Sobolev-Slobodeckij-like function spaces with respect to a Lévy measure ν and an open subset $\Omega \subset \mathbb{R}^d$, in particular $V_\nu(\Omega | \mathbb{R}^d)$ and nonlocal trace spaces $T_\nu(\Omega^c)$. The function spaces are tailor-made for nonlocal elliptic complement value problems including the Neumann problem. We prove the existence of an embedding of $V_\nu(\Omega | \mathbb{R}^d)$ into weighted spaces $L^2(\mathbb{R}^d; \nu')$ for different measures ν' and into the nonlocal trace space $T_\nu(\Omega^c)$. We are able to compare $T_\nu(\Omega^c)$ with known trace spaces, see [Proposition 2.31](#). A main result of this section is [Theorem 2.25](#), which proves that the bilinear form $(\mathcal{E}, V_\nu(\Omega | \mathbb{R}^d))$ is a regular Dirichlet form on $L^2(\mathbb{R}^d; \nu')$. This result allows to construct jump processes with some sort of reflection.

Throughout this work, let ν be a Lévy measure whose density is a measurable symmetric function $\nu : \mathbb{R}^d \setminus \{0\} \rightarrow [0, \infty)$ satisfying [\(L\)](#). We will impose further conditions on ν where needed. For simplicity, we assume in our main results that ν has full support. See [Section 1.3](#) for a discussion on how this can be relaxed.

2.1. Lévy condition and energy forms. Before we begin, let us make an observation that nicely links [\(L\)](#) with nonlocal energies.

Theorem 2.1. *Assume $\nu : \mathbb{R}^d \setminus \{0\} \rightarrow [0, \infty)$ is measurable and radial. Then the energy*

$$\iint_{\mathbb{R}^d \times \mathbb{R}^d} (u(y) - u(x))^2 \nu(x - y) \, dy dx$$

is finite for every $u \in C_c^\infty(\mathbb{R}^d)$ if and only if ν satisfies [\(L\)](#).

Proof. It is easy to see that condition [\(L\)](#) implies finiteness of the energy for $u \in C_c^\infty(\mathbb{R}^d)$. For the converse, let $u \in C_c^\infty(\mathbb{R}^d)$ be nontrivial and $\varepsilon > 0$, then there is $\delta > 0$ such that

$$\|\nabla u(\cdot + h) - \nabla u\|_{L^2(\mathbb{R}^d)}^2 < \varepsilon \quad \text{if } |h| \leq \delta.$$

The fundamental theorem of calculus, $\frac{1}{2}b^2 \leq a^2 + (b-a)^2$ and integration in polar coordinates yield

$$\begin{aligned} \iint_{\mathbb{R}^d \times \mathbb{R}^d} (u(y) - u(x))^2 \nu(x - y) \, dy dx &\geq \int_{\mathbb{R}^d} \int_{B_\delta(0)} \left| \int_0^1 \nabla u(x + th) \cdot h dt \right|^2 \nu(h) dh \, dx \\ &\geq \frac{1}{2} \int_{\mathbb{R}^d} \int_{\mathbb{S}^{d-1}} |\nabla u(x) \cdot w|^2 d\sigma_{d-1}(w) \left(\int_0^\delta r^{d+1} \nu(r) dr \right) dx - \varepsilon \int_{B_\delta(0)} |h|^2 \nu(h) dh \\ &\geq \left(\frac{1}{2} K_{d,2} \|\nabla u\|_{L^2(\mathbb{R}^d)}^2 - \varepsilon \right) \int_{B_\delta(0)} |h|^2 \nu(h) dh. \end{aligned}$$

Recall that, invariance of the Lebesgue measure under rotations implies for all $z \in \mathbb{R}^d$

$$\int_{\mathbb{S}^{d-1}} |w \cdot z|^2 d\sigma_{d-1}(w) = K_{d,2}|z|^2 \quad \text{with} \quad K_{d,2} = \int_{\mathbb{S}^{d-1}} |w \cdot e|^2 d\sigma_{d-1}(w) = \frac{1}{d}.$$

Therefore, choosing $\varepsilon = \frac{1}{4}K_{d,2}\|\nabla u\|_{L^2(\mathbb{R}^d)}^2$, we obtain

$$\iint_{\mathbb{R}^d \times \mathbb{R}^d} (u(y) - u(x))^2 \nu(x-y) dy dx \geq \frac{1}{4}K_{d,2}\|\nabla u\|_{L^2(\mathbb{R}^d)}^2 \int_{B_\delta(0)} |h|^2 \nu(h) dh.$$

It remains to show that ν is integrable away from the origin. Assume $u \in C_c^\infty(\mathbb{R}^d)$ with $\text{supp } u \subset B_\tau(0)$ and $0 < \tau < \delta/2$. For all $x \in B_\tau$ we have $B_\tau(0) \subset B_\delta(x)$ and hence

$$\begin{aligned} \iint_{\mathbb{R}^d \times \mathbb{R}^d} (u(y) - u(x))^2 \nu(x-y) dy dx &\geq 2 \int_{B_\tau(0)} |u(x)|^2 dx \int_{\mathbb{R}^d \setminus B_\tau(0)} \nu(x-y) dy \\ &\geq 2 \int_{B_\tau(0)} |u(x)|^2 dx \int_{\mathbb{R}^d \setminus B_\delta(0)} \nu(h) dh. \end{aligned}$$

Hence, this together with the previous estimate imply that ν satisfies condition **(L)**. \square

2.2. Sobolev-Slobodeckij-like spaces. Let $\Omega \subset \mathbb{R}^d$ be open. We define the space $H_\nu(\Omega)$ by

$$H_\nu(\Omega) = \left\{ u \in L^2(\Omega) \mid \mathcal{E}_\Omega(u, u) < \infty \right\},$$

equipped with the norm $\|u\|_{H_\nu(\Omega)}^2 = \|u\|_{L^2(\Omega)}^2 + \mathcal{E}_\Omega(u, u)$, where

$$\mathcal{E}_\Omega(u, v) = \iint_{\Omega \times \Omega} (u(x) - u(y))(v(x) - v(y)) \nu(x-y) dx dy. \quad (2.1)$$

When the function ν is bounded, e.g., in the case $\nu(h) = \mathbb{1}_{B_1}(h)$, the space $H_\nu(\Omega)$ equals $L^2(\Omega)$.

Following [FKV15] we introduce the vector space $V_\nu(\Omega \mid \mathbb{R}^d)$ as follows:

$$V_\nu(\Omega \mid \mathbb{R}^d) = \left\{ u : \mathbb{R}^d \rightarrow \mathbb{R} \text{ meas.} : u|_\Omega \in L^2(\Omega), |u|_{V_\nu(\Omega \mid \mathbb{R}^d)}^2 < \infty \right\},$$

where the seminorm is defined by

$$|u|_{V_\nu(\Omega \mid \mathbb{R}^d)}^2 = \iint_{\Omega \times \mathbb{R}^d} (u(x) - u(y))^2 \nu(x-y) dx dy < \infty.$$

We endow the vector space $V_\nu(\Omega \mid \mathbb{R}^d)$ with the norm $\|\cdot\|_{V_\nu(\Omega \mid \mathbb{R}^d)}$ given by

$$\|u\|_{V_\nu(\Omega \mid \mathbb{R}^d)}^2 = \|u\|_{L^2(\Omega)}^2 + |u|_{V_\nu(\Omega \mid \mathbb{R}^d)}^2.$$

Given functions $u, v \in V_\nu(\Omega \mid \mathbb{R}^d)$, we define a bilinear form \mathcal{E} by

$$\mathcal{E}(u, v) = \frac{1}{2} \iint_{(\Omega^c \times \Omega^c)^c} (u(x) - u(y))(v(x) - v(y)) \nu(x-y) dx dy.$$

Lemma 2.2. *We have $|u|_{V_\nu(\Omega \mid \mathbb{R}^d)}^2 \leq \mathcal{E}(u, u) \leq 2|u|_{V_\nu(\Omega \mid \mathbb{R}^d)}^2$ for any measurable function u .*

Proof. On the one hand, the inequality

$$\iint_{\Omega \mathbb{R}^d} (u(x) - u(y))^2 \nu(x-y) dy dx \leq \iint_{(\Omega^c \times \Omega^c)^c} (u(x) - u(y))^2 \nu(x-y) dy dx = 2 \mathcal{E}(u, u)$$

holds trivially true. On the other hand,

$$\begin{aligned} \mathcal{E}(u, u) &= \frac{1}{2} \iint_{\mathbb{R}^d \mathbb{R}^d} (u(x) - u(y))^2 [\mathbf{1}_\Omega(x) \vee \mathbf{1}_\Omega(y)] \nu(x-y) dy dx \\ &\leq \frac{1}{2} \iint_{\mathbb{R}^d \mathbb{R}^d} (u(x) - u(y))^2 [\mathbf{1}_\Omega(x) + \mathbf{1}_\Omega(y)] \nu(x-y) dy dx \\ &= \iint_{\Omega \mathbb{R}^d} (u(x) - u(y))^2 \nu(x-y) dy dx, \end{aligned}$$

which completes the proof. \square

Some authors find it convenient to work with the smaller space $V_\nu(\Omega | \mathbb{R}^d) \cap L^2(\mathbb{R}^d)$ equipped with its corresponding norm. For the study of nonlocal Dirichlet problems this restriction is not necessary, though. On the other hand, the requirement $u|_\Omega \in L^2(\Omega)$ for $u \in V_\nu(\Omega | \mathbb{R}^d)$ is natural as shown by the following observation.

Proposition 2.3. *Let ν be a unimodal Lévy measure and $\Omega \subset \mathbb{R}^d$ be a bounded open set. Assume $\Omega \subset B_{R/2}(0)$ for some $R \geq 1$ with $\nu(R) \neq 0$. Then $\mathcal{E}(u, u) < \infty$ implies $u|_\Omega \in L^2(\Omega)$.*

The condition that ν is unimodal is not restrictive at all and we recall its definition for the readers' convenience.

Definition 2.4. A Lévy density ν is called *unimodal* if it radial with an almost decreasing profile, i.e., there is a constant $c \geq 1$ such that $\nu(r) \leq c \nu(s)$ for all $r, s > 0$ with $s \leq r$.

Remark 2.5. There are radial Lévy measures, which are not almost decreasing such as

$$\nu(x) = |x|^{-d-1} \left(\frac{2 + \cos(|x|)}{3} \right)^{|x|^4}.$$

Proof of Proposition 2.3. First, since $\Omega \subset B_{R/2}(0)$, then for all $x, y \in \Omega$ we have $\nu(x-y) \geq c'$ with $c' = c\nu(R) > 0$. By Jensen's inequality, we have

$$\begin{aligned} \iint_{(\Omega^c \times \Omega^c)^c} (u(x) - u(y))^2 \nu(x-y) dx dy &\geq c' \iint_{\Omega \Omega} (|u(x)| - |u(y)|)^2 dx dy \\ &\geq c' |\Omega| \int_{\Omega} \left(|u(x)| - f_\Omega |u| \right)^2 dx. \end{aligned}$$

This shows that the mean value $f_\Omega |u|$ is finite. We conclude $u \in L^2(\Omega)$ because of

$$\int_{\Omega} |u(x)|^2 dx \leq 2 \int_{\Omega} \left(|u(x)| - f_\Omega |u| \right)^2 dx + 2 |\Omega| \left(f_\Omega |u| \right)^2.$$

\square

Definition 2.6. We define $V_{\nu,0}(\Omega|\mathbb{R}^d)$ as follows:

$$\begin{aligned} V_{\nu,0}(\Omega|\mathbb{R}^d) &= \{u \in V_{\nu}(\Omega|\mathbb{R}^d) \mid u = 0 \text{ a.e. on } \mathbb{R}^d \setminus \Omega\} \\ &= \{u \in H_{\nu}(\mathbb{R}^d) \mid u = 0 \text{ a.e. on } \mathbb{R}^d \setminus \Omega\}. \end{aligned} \quad (2.2)$$

Remark 2.7. The function space $(H_{\nu}(\Omega), \|\cdot\|_{H_{\nu}(\Omega)})$ is a separable Hilbert space, see [FKV15, FKV20]. The norms $\|\cdot\|_{V_{\nu}(\Omega|\mathbb{R}^d)}$ and $\|\cdot\|_{H_{\nu}(\mathbb{R}^d)}$ agree on $V_{\nu,0}(\Omega|\mathbb{R}^d)$ and $V_{\nu,0}(\Omega|\mathbb{R}^d)$ is a closed subspace of $H_{\nu}(\mathbb{R}^d)$, hence a Hilbert space.

Proposition 2.8. *If ν has full support, then $(V_{\nu}(\Omega|\mathbb{R}^d), \|\cdot\|_{V_{\nu}(\Omega|\mathbb{R}^d)})$ is a separable Hilbert space.*

We refer the reader to [FKV15, DROV17] for a proof in a special setting and to [FG20, Thm 3.46] for the general case.

It is worthwhile noticing that $\|\cdot\|_{V_{\nu}(\Omega|\mathbb{R}^d)}$ is always a norm on $V_{\nu,0}(\Omega|\mathbb{R}^d)$, but not in general a norm on $V_{\nu}(\Omega|\mathbb{R}^d)$ if ν is not fully supported. A simple counterexample is given by $\nu(h) = \mathbb{1}_{B_1(0)}(h)$ and $\Omega = B_1(0)$. For the function $u(x) = \mathbb{1}_{B_{\frac{1}{2}}(0)}(x)$ we have $\|u\|_{V_{\nu}(\Omega|\mathbb{R}^d)} = 0$ whereas $u \neq 0$. With regard to this comment and the discussion in Section 1.3 let us define $V_{\nu,0}(\Omega|E)$ for $\Omega \subset E \subset \mathbb{R}^d$:

$$V(\Omega|E) = \left\{ u : E \rightarrow \mathbb{R} \text{ meas.} : u|_{\Omega} \in L^2(\Omega), |u|_{V_{\nu}(\Omega|E)}^2 < \infty \right\}, \quad (2.3)$$

where the seminorm is defined by

$$|u|_{V_{\nu}(\Omega|E)}^2 = \iint_{\Omega E} (u(x) - u(y))^2 \nu(x-y) dx dy < \infty.$$

$V_{\nu}(\Omega|E)$ is normed space with respect to the norm $\|u\|_{V_{\nu}(\Omega|E)}^2 = \|u\|_{L^2(\Omega)}^2 + |u|_{V_{\nu}(\Omega|E)}^2$.

Proposition 2.9. *If $E = \Omega + \text{supp}(\nu)$ and $0 \in \text{supp}(\nu)$, then $(V_{\nu}(\Omega|E), \|\cdot\|_{V_{\nu}(\Omega|E)})$ is a separable Hilbert space.*

As already seen in Theorem 2.1, the condition (L) is important for the properties of the spaces $H_{\nu}(\Omega)$ and $V_{\nu}(\Omega|\mathbb{R}^d)$.

Proposition 2.10. *Let $\nu : \mathbb{R}^d \rightarrow [0, \infty]$ be symmetric. The following assertions hold true.*

- (i) *If $\nu \in L^1(\mathbb{R}^d)$, then $H_{\nu}(\mathbb{R}^d) = L^2(\mathbb{R}^d)$ with equivalence in norm.*
- (ii) *If $\nu \in L^1(\mathbb{R}^d, 1 \wedge |h|^2 dh)$ and Ω is bounded, then $H_{\nu}(\Omega)$ and $V_{\nu}(\Omega|\mathbb{R}^d)$ contain all bounded Lipschitz functions.*
- (iii) *If ν is radial and $\int_{B_1} |h|^2 \nu(h) dh = \infty$ and $\int_{B_1 \setminus B_{\delta}} \nu(h) dh < \infty$ for every $\delta > 0$, then $u \in C^1(\mathbb{R}^d) \cap H_{\nu}(\mathbb{R}^d)$ implies that u is constant.*
- (iv) *If ν is radial, then for every $u \in H^1(\mathbb{R}^d)$ there is $\delta = \delta(u) > 0$, such that*

$$\frac{1}{4d} \left(\int_{B_{\delta}(0)} |h|^2 \nu(h) dh \right) \|\nabla u\|_{L^2(\mathbb{R}^d)}^2 \leq |u|_{H_{\nu}(\mathbb{R}^d)}^2 \leq 4 \|\nu\|_{L^1(\mathbb{R}^d, 1 \wedge |h|^2 dh)} \|u\|_{H^1(\mathbb{R}^d)}^2. \quad (2.4)$$

The proof is analogous to the one of Theorem 2.1. See also [Fog21b, Proposition 2.14] or [FG20, Proposition 3.46] for a general setting.

For many results it is crucial that smooth functions with compact support are dense in the function space under consideration. Let us summarize some important results in this direction.

Theorem 2.11. *Let ν satisfy (L) with full support and let $\Omega \subset \mathbb{R}^d$ be open.*

- (i) $C^\infty(\Omega) \cap H_\nu(\Omega)$ is dense in $H_\nu(\Omega)$.
- (ii) If Ω has a compact continuous boundary $\partial\Omega$, then $C_c^\infty(\overline{\Omega})$ is dense in $H_\nu(\Omega)$.
- (iii) If Ω has a compact continuous boundary $\partial\Omega$, then $C_c^\infty(\Omega)$ is dense in $V_{\nu,0}(\Omega|\mathbb{R}^d)$.
- (iv) If Ω has a compact Lipschitz boundary $\partial\Omega$, then $C_c^\infty(\mathbb{R}^d)$ is dense in $V_\nu(\Omega|\mathbb{R}^d)$ with respect to the norms $\|\cdot\|_{V_\nu(\Omega|\mathbb{R}^d)}$ and $\|\|\cdot\|\|_{V_\nu(\Omega|\mathbb{R}^d)}$ with $\|u\|_{V_\nu(\Omega|\mathbb{R}^d)}^2 = \|u\|_{L^2(\mathbb{R}^d)}^2 + |u|_{V_\nu(\Omega|\mathbb{R}^d)}^2$.

The proofs of the first and second statement can be found in [FG20] and [DK21b]. The first statement is similar to a Meyers-Serrin density type result. Note that $C_c^\infty(\overline{\Omega})$ is defined as $\{v|_{\overline{\Omega}} : v \in C_c^\infty(\mathbb{R}^d)\}$. The proof of the third statement is given in [FSV15, Gri11] for a special choice of ν and in [FG20], [BGPR20] for the general case. The proof of the fourth assertion is given in [FKV20].

Remark 2.12. Concerning the question, whether it is necessary to assume the continuity of $\partial\Omega$ for the density of $C_c^\infty(\Omega)$ in $V_{\nu,0}(\Omega|\mathbb{R}^d)$ or not, it is interesting to compare [FKV15, Remark 7] with [CF12, Theorem 3.3.9].

Remark 2.13. For the kernel $\nu(h) = |h|^{-d-\alpha}$, $\alpha \in (0, 2)$, let $V^{\alpha/2}(\Omega|\mathbb{R}^d)$, $V_0^{\alpha/2}(\Omega|\mathbb{R}^d)$ and $H^{\alpha/2}(\Omega)$ be the spaces $V_\nu(\Omega|\mathbb{R}^d)$, $V_{\nu,0}(\Omega|\mathbb{R}^d)$ and $H_\nu(\Omega)$ respectively. It is worth nothing that, see [Gri11], if Ω has a compact Lipschitz boundary and $\alpha \neq 1$ then

$$V_0^{\alpha/2}(\Omega|\mathbb{R}^d) = \overline{C_c^\infty(\Omega)}^{V^{\alpha/2}(\Omega|\mathbb{R}^d)} = \overline{C_c^\infty(\Omega)}^{H^{\alpha/2}(\mathbb{R}^d)} = \overline{C_c^\infty(\Omega)}^{H^{\alpha/2}(\Omega)},$$

where the first and the second equality follow from Theorem 2.11 (ii). Furthermore, if $0 < \alpha < 1$ then we also have $H^{\alpha/2}(\Omega) = \overline{C_c^\infty(\Omega)}^{H^{\alpha/2}(\Omega)}$.

2.3. Weighted L^2 -spaces. In order to set up the Dirichlet problem in L^2 -spaces over \mathbb{R}^d , we define a measure on the Borel sets of \mathbb{R}^d that captures the behavior of ν at infinity. There are several possibilities.

Definition 2.14. Let ν satisfy (L) with full support and $B \subset \mathbb{R}^d$ be open and bounded. Define the weights $\overline{\nu}, \tilde{\nu} : \mathbb{R}^d \rightarrow [0, \infty]$ by

$$\begin{aligned} \tilde{\nu}(x) &= \int_B (1 \wedge \nu(x-y)) \, dy, \\ \overline{\nu}(x) &= \operatorname{ess\,inf}_{y \in B} \nu(x-y). \end{aligned}$$

If ν is a unimodal Lévy measure, then we define the Borel measure $\nu^* : \mathbb{R}^d \rightarrow [0, \infty]$ by

$$\nu^*(x) = \nu(R(1+|x|)),$$

where $R > 1$ is an arbitrary fixed number.

Example 2.15. Let $0 < \alpha < 2$ and $\nu(h) = |h|^{-d-\alpha}$ for $h \neq 0$. Let $B \subset \mathbb{R}^d$ be open and bounded, and $R > 1$. Then

$$\tilde{\nu}(x) \asymp \overline{\nu}(x) \asymp \nu^*(x) \asymp (1+|x|)^{-d-\alpha},$$

where the constants behind the relation \asymp depend on the choice of B and R . See [Theorem 2.21](#) for the general case.

Let us discuss important properties of the three measures $\tilde{\nu}$, $\bar{\nu}$, and ν^* . The following lemmas show that it is possible to define certain norms on $V_\nu(\Omega|\mathbb{R}^d)$ (with nice properties), which are equivalent to the norm $\|\cdot\|_{V_\nu(\Omega|\mathbb{R}^d)}$.

Lemma 2.16 (Properties of $\tilde{\nu}$). *Let $\Omega \subset \mathbb{R}^d$ be open and ν satisfy [\(L\)](#) with full support. Assume $B \subset \Omega$.*

- (i) *We have $\tilde{\nu} \in L^\infty(\mathbb{R}^d)$. Moreover, if $|B| < \infty$, then $\tilde{\nu} \in L^1(\mathbb{R}^d)$.*
- (ii) *The embedding $V_\nu(\Omega|\mathbb{R}^d) \hookrightarrow L^2(\mathbb{R}^d, \tilde{\nu})$ is continuous. If $|B| < \infty$, then $L^2(\mathbb{R}^d, \tilde{\nu}) \hookrightarrow L^1(\mathbb{R}^d, \tilde{\nu})$ is continuous.*
- (iii) *If ν is unimodal and B is bounded, then on $V_\nu(\Omega|\mathbb{R}^d)$, the norms $\|\cdot\|_{V_\nu(\Omega|\mathbb{R}^d)}^\#$ and $\|\cdot\|_{V_\nu(\Omega|\mathbb{R}^d)}^*$ are equivalent, where*

$$\begin{aligned} \|u\|_{V_\nu(\Omega|\mathbb{R}^d)}^{*2} &= \int_{\mathbb{R}^d} |u(x)|^2 \tilde{\nu}(x) dx + \iint_{(\Omega^c \times \Omega^c)^c} (u(x) - u(y))^2 \nu(x-y) dx dy, \\ \|u\|_{V_\nu(\Omega|\mathbb{R}^d)}^{\#2} &= \int_{\Omega} |u(x)|^2 \tilde{\nu}(x) dx + \iint_{(\Omega^c \times \Omega^c)^c} (u(x) - u(y))^2 \nu(x-y) dx dy. \end{aligned}$$

Furthermore, if Ω is bounded then the norms $\|\cdot\|_{V_\nu(\Omega|\mathbb{R}^d)}$ and $\|\cdot\|_{V_\nu(\Omega|\mathbb{R}^d)}^*$ are also equivalent.

Proof. Firstly, we observe $1 \wedge \nu \in L^1(\mathbb{R}^d)$. It follows $\tilde{\nu}(x) \leq \|1 \wedge \nu\|_{L^1(\mathbb{R}^d)}$ for almost every $x \in \mathbb{R}^d$. If $|B| < \infty$, then Fubini's theorem implies

$$\int_{\mathbb{R}^d} \tilde{\nu}(x) dx \leq |B| \|1 \wedge \nu\|_{L^1(\mathbb{R}^d)} < \infty.$$

The continuous embedding $L^2(\mathbb{R}^d, \tilde{\nu}) \hookrightarrow L^1(\mathbb{R}^d, \tilde{\nu})$ follows directly. The continuity of the embedding $V_\nu(\Omega|\mathbb{R}^d) \hookrightarrow L^2(\mathbb{R}^d, \tilde{\nu})$ is obtained as follows

$$\begin{aligned} \int_{\mathbb{R}^d} |u(x)|^2 \tilde{\nu}(x) dx &\leq 2 \int_B |u(y)|^2 \left(\int_{\mathbb{R}^d} 1 \wedge \nu(x-y) dx \right) dy + 2 \iint_{B \times \mathbb{R}^d} (u(x) - u(y))^2 1 \wedge \nu(x-y) dx dy \\ &\leq C_1 \int_{\Omega} |u(y)|^2 dy + C_1 \iint_{\Omega \times \mathbb{R}^d} (u(x) - u(y))^2 \nu(x-y) dx dy = C_1 \|u\|_{V_\nu(\Omega|\mathbb{R}^d)}^2. \end{aligned}$$

Here $C_1 = 2\|1 \wedge \nu\|_{L^1(\mathbb{R}^d)} + 2$. The following inequalities obviously hold

$$\sqrt{C_1 + 1} \|u\|_{V_\nu(\Omega|\mathbb{R}^d)} \geq \|u\|_{V_\nu(\Omega|\mathbb{R}^d)}^* \geq \|u\|_{V_\nu(\Omega|\mathbb{R}^d)}^\#.$$

Next if ν is unimodal and B is bounded, then there is a constant $c' > 0$ such that $\tilde{\nu}(x) \geq c'$ for all $x \in B$. The following estimates hold

$$\begin{aligned}
& \int_{\Omega} |u(x)|^2 \tilde{\nu}(x) dx + \iint_{\Omega \Omega^c} (u(x) - u(y))^2 \nu(x - y) dy dx \\
& \geq c' \int_B |u(x)|^2 dx + \iint_{\Omega \Omega^c} (u(x) - u(y))^2 \nu(x - y) dy dx \\
& \geq c' \|1 \wedge \nu\|_{L^1(\mathbb{R}^d)}^{-1} \iint_{B \Omega^c} |u(x)|^2 1 \wedge \nu(x - y) dy dx + \iint_{B \Omega^c} (u(x) - u(y))^2 \nu(x - y) dy dx \\
& \geq (1 \wedge c' \|1 \wedge \nu\|_{L^1(\mathbb{R}^d)}^{-1}) \iint_{\Omega^c B} \left[|u(x)|^2 + (u(x) - u(y))^2 \right] 1 \wedge \nu(x - y) dx dy \\
& \geq \frac{1}{2} (1 \wedge c' \|1 \wedge \nu\|_{L^1(\mathbb{R}^d)}^{-1}) \int_{\Omega^c} u^2(y) \tilde{\nu}(y) dy.
\end{aligned}$$

The first and the last line imply that $\|u\|_{V_\nu(\Omega|\mathbb{R}^d)}^* \leq C \|u\|_{V_\nu(\Omega|\mathbb{R}^d)}^\#$ for some constant $C > 0$. Thus the norms $\|\cdot\|_{V_\nu(\Omega|\mathbb{R}^d)}^*$ and $\|\cdot\|_{V_\nu(\Omega|\mathbb{R}^d)}^\#$ are equivalent. If in addition Ω is bounded, then $\tilde{\nu}(x) \geq c'$ for all $x \in \Omega$ for some $c' \in (0, 1)$ so that $\|u\|_{V_\nu(\Omega|\mathbb{R}^d)}^\# \geq c' \|u\|_{V_\nu(\Omega|\mathbb{R}^d)}$ since

$$\int_{\Omega} |u(x)|^2 \tilde{\nu}(x) dx \geq c' \int_{\Omega} |u(x)|^2 dx.$$

The equivalence of the norms $\|u\|_{V_\nu(\Omega|\mathbb{R}^d)}$ and $\|u\|_{V_\nu(\Omega|\mathbb{R}^d)}^\#$ is thus proved. \square

Lemma 2.17 (Properties of $\bar{\nu}$). *Assume $\Omega \subset \mathbb{R}^d$ is open. Let ν satisfy **(L)** with full support. Assume $B \subset \Omega$ be open and nonempty.*

- (i) $\bar{\nu} \in L^1(\mathbb{R}^d)$ and, if ν is unimodal, then $\bar{\nu} \in L^\infty(\mathbb{R}^d)$.
- (ii) The embeddings $V_\nu(\Omega|\mathbb{R}^d) \hookrightarrow L^2(\mathbb{R}^d, \bar{\nu}) \hookrightarrow L^1(\mathbb{R}^d, \bar{\nu})$ are continuous.
- (iii) If ν is unimodal and B is bounded then the norms $\|\cdot\|_{V_\nu(\Omega|\mathbb{R}^d)}^\#$ and $\|\cdot\|_{V_\nu(\Omega|\mathbb{R}^d)}^*$ are equivalent, where $\|u\|_{V_\nu(\Omega|\mathbb{R}^d)}^*$ and $\|u\|_{V_\nu(\Omega|\mathbb{R}^d)}^\#$ are defined as in [Lemma 2.16](#)(iii) with $\tilde{\nu}$ replaced by $\bar{\nu}$.

Furthermore, if Ω is bounded then the norms $\|\cdot\|_{V_\nu(\Omega|\mathbb{R}^d)}$ and $\|\cdot\|_{V_\nu(\Omega|\mathbb{R}^d)}^*$ are equivalent.

Proof. To prove (i), select $x_0 \in B$ and $r > 0$ such that $B_{8r}(x_0) \subset B$. Note that, for $x \in B_{2r}(x_0)$ and $y \in B_{4r}^c(x_0) \cap B$ or for $x \in B_{2r}^c(x_0)$ and $y \in B_{2r}(x_0)$ we have $|h| \geq r$ where $h = x - y$. Moreover, for almost all $y \in B_{4r}^c(x_0)$ and $z \in B_r(x_0)$ we have

$$\begin{aligned}
\int_{B_{2r}(x_0)} \operatorname{ess\,inf}_{y \in B_{4r}^c(x_0) \cap B} \nu(x - y) dx & \leq \int_{|h| \geq r} \nu(h) dh, \\
\int_{B_{2r}^c(x_0)} \operatorname{ess\,inf}_{y \in B_r(x_0)} \nu(x - y) dx & \leq \int_{|h| \geq r} \nu(h) dh.
\end{aligned}$$

The integrability of $\bar{\nu}$ follows since

$$\int_{\mathbb{R}^d} \bar{\nu}(x) dx \leq \int_{B_{2r}(x_0)} \operatorname{ess\,inf}_{y \in B_{4r}^c(x_0) \cap B} \nu(x - y) dx + \int_{B_{2r}^c(x_0)} \operatorname{ess\,inf}_{y \in B_r(x_0)} \nu(x - y) dx \leq 2 \int_{|h| \geq r} \nu(h) dh < \infty.$$

Analogously, if ν is unimodal then for $x \in B_{2r}(x_0)$ and $y \in B_{4r}^c(x_0) \cap B$ or for $x \in B_{2r}^c(x_0)$ and $y \in B_{2r}(x_0)$ we have $|x - y| \geq r$. In both cases, $\bar{\nu}(x) \leq \nu(x - y) \leq c\nu(r)$. Next, we fix $y \in K' \subset B$ where K' is a measurable subset such that $0 < |K'| < \infty$.

$$\begin{aligned} \int_{\mathbb{R}^d} |u(x)|^2 \bar{\nu}(x) dx &\leq 2|K'|^{-1} \|\bar{\nu}\|_{L^1(\mathbb{R}^d)} \int_{K'} |u(y)|^2 dy + 2|K'|^{-1} \iint_{K' \times \mathbb{R}^d} (u(x) - u(y))^2 \nu(x - y) dx dy \\ &\leq C \|u\|_{V_\nu(\Omega|\mathbb{R}^d)}^2, \end{aligned}$$

where $C = 2|K'|^{-1}(\|\bar{\nu}\|_{L^1(\mathbb{R}^d)} + 1)$. This together with the previous step imply the continuity of the embeddings $V_\nu(\Omega|\mathbb{R}^d) \hookrightarrow L^2(\mathbb{R}^d, \bar{\nu}) \hookrightarrow L^1(\mathbb{R}^d, \bar{\nu})$. The rest of the proof is analogous to that of [Lemma 2.16](#). \square

Lemma 2.18 (Properties of ν^*). *Assume $\Omega \subset \mathbb{R}^d$ is open and $R > 1$ satisfies $|B_R(0) \cap \Omega| > 0$ and $|B_R(0) \cap \Omega^c| > 0$. Let ν satisfy [\(L\)](#) with full support.*

- (i) $\nu^* \in L^1(\mathbb{R}^d) \cap L^\infty(\mathbb{R}^d)$.
- (ii) The embeddings $V_\nu(\Omega|\mathbb{R}^d) \hookrightarrow L^2(\mathbb{R}^d, \nu^*) \hookrightarrow L^1(\mathbb{R}^d, \nu^*)$ are continuous.
- (iii) On $V_\nu(\Omega|\mathbb{R}^d)$, the norms $\|\cdot\|_{V_\nu(\Omega|\mathbb{R}^d)}^\#$ and $\|\cdot\|_{V_\nu(\Omega|\mathbb{R}^d)}^*$ are equivalent, where $\|u\|_{V_\nu(\Omega|\mathbb{R}^d)}^*$ and $\|u\|_{V_\nu(\Omega|\mathbb{R}^d)}^\#$ are defined as in [Lemma 2.16\(iii\)](#) with $\tilde{\nu}$ replaced by ν^* .

Furthermore, if Ω is bounded then the norms $\|\cdot\|_{V_\nu(\Omega|\mathbb{R}^d)}$ and $\|\cdot\|_{V_\nu(\Omega|\mathbb{R}^d)}^*$ are equivalent.

The proof of [Lemma 2.18](#) is analogous to that of [Lemma 2.16](#) and can be found in [\[FKV20\]](#) or [\[FG20, Lemma 3.24\]](#). In order to show $\nu^* \in L^1(\mathbb{R}^d) \cap L^\infty(\mathbb{R}^d)$, one notes that for all $h \in \mathbb{R}^d$ we have $R \leq R(1 + |h|)$ and $|h| \leq R(1 + |h|)$ and hence $\nu^*(h) \leq C(1 \wedge \nu(h))$. This implies the claim because of $1 \wedge \nu \in L^1(\mathbb{R}^d) \cap L^\infty(\mathbb{R}^d)$.

The measures ν^* , $\bar{\nu}$ and $\tilde{\nu}$ turn out to be comparable if ν satisfies a certain doubling condition at infinity.

Definition 2.19. A radial Lévy density ν satisfies a doubling condition at infinity if:

$$\text{For every } \theta \geq 1 \text{ there exist } c_1, c_2 > 0 \text{ with } c_1\nu(r) \leq \nu(\theta r) \leq c_2\nu(r) \text{ for all } r \geq 1. \quad (2.5)$$

Not that the property [\(2.5\)](#) is indeed equivalent to say that

$$\text{There exist } c_1, c_2 > 0 \text{ with } c_1\nu(r) \leq \nu(2r) \leq c_2\nu(r) \text{ for all } r \geq 1. \quad (2.6)$$

Remark 2.20. The doubling condition at infinity imposes some decay of ν at infinity. The example $\nu(h) = |h|^{-d-1} \mathbf{1}_{\{|h| \leq 7\}}$ satisfies [Definition 2.4](#) but not [\(2.5\)](#). Unimodality bounds one-sided oscillations of ν for all values of $|x|$. Fix $0 < \alpha < \beta < 2$. Define $\nu_1(r) = r^{-d-\alpha}$ for $r \geq 1$. Define $\nu_1(r) = r^{-d-\beta}$ for $\frac{1}{2k+1} \leq r < \frac{1}{2k}$ and $\nu_1(r) = r^{-d-\alpha}$ for $\frac{1}{2k+2} \leq r < \frac{1}{2k+1}$ for $k \in \mathbb{N}$. Then ν_1 is not unimodal but it trivially does satisfy [\(2.5\)](#).

Theorem 2.21. *Assume that ν is unimodal and satisfies [\(2.5\)](#). Then for every open bounded set $B \subset \mathbb{R}^d$ and every $R \geq 1$ we have $\tilde{\nu}(x) \asymp \bar{\nu}(x) \asymp \nu^*(x) \asymp 1 \wedge \nu(x)$.*

Proof. Let us observe that, $\tilde{\nu}, \bar{\nu}, \nu^*$ and $1 \wedge \nu$ are all bounded above. Indeed, for $x \in \mathbb{R}^d$ we have $R \leq R(1 + |x|)$ and $|x| \leq R(1 + |x|)$ and hence $\nu^*(x) \leq C(1 \wedge \nu(x)) \leq C$. Obviously, $\tilde{\nu}(x) \leq \|1 \wedge \nu\|_{L^1(\mathbb{R}^d)}$. Now, let $r > 0$ sufficiently small and $x_0 \in B$ such that $B_{8r}(x_0) \subset B$. If $x \in B_{2r}(x_0)$ and $y \in B_{4r}^c(x_0) \cap B$ or if $x \in B_{2r}^c(x_0)$ and $y \in B_{2r}(x_0)$ then $|x - y| \geq r$. In both cases, $\bar{\nu}(x) \leq \nu(x - y) \leq c\nu(r)$.

Next, there is no loss of generality if we assume that $B \subset B_R$. Assume $|x| \leq 4R$ then $|x - y| \leq 5R$ for all $y \in B$. The unimodality and the foregoing boundedness imply that $c^{-1}\nu(R(1 + R)) \leq \nu(R(1 + |x|)) \leq C$, $c^{-1}\nu(5R) \leq \bar{\nu}(x)$, $1 \wedge \nu(4R) \leq c1 \wedge \nu(x) \leq C$ and that $1 \wedge \nu(5R) \leq c1 \wedge \nu(x - y)$ that is $|B|1 \wedge \nu(5R) \leq c\tilde{\nu}(x) \leq C$. Thus $\tilde{\nu}(x) \asymp \bar{\nu}(x) \asymp \nu^*(x) \asymp 1 \wedge \nu(x)$ for $|x| \leq 4R$.

Now assume that $|x| \geq 4R$, then we have $1 \leq \frac{|x|}{2} \leq |x - y| \leq 2|x|$ for all $y \in B$ and $|x| \leq R(1 + |x|) \leq 2R|x|$. The doubling condition (2.5) implies that for some constants $0 < c_1 < 1 < c_2$, we have $c_1\nu(x) \leq \nu(R(1 + |x|)) \leq c_2\nu(x)$ and $c_1\nu(x) \leq \nu(x - y) \leq c_2\nu(x)$ for all $y \in B$. We get $c_1\nu(x) \leq \bar{\nu}(x) \leq c_2\nu(x)$ and integrating over B implies that $c_1|B|1 \wedge \nu(x) \leq c\tilde{\nu}(x) \leq c_2|B|1 \wedge \nu(x)$. Together with the boundedness implies $\tilde{\nu}(x) \asymp \bar{\nu}(x) \asymp \nu^*(x) \asymp 1 \wedge \nu(x)$ for $|x| \geq 4R$. □

Example 2.22. As in Example 2.15, let $0 < \alpha < 2$ and $\nu(h) = |h|^{-d-\alpha}$ for $h \neq 0$. Then $\tilde{\nu}(x) \asymp 1 \wedge \nu(x) \asymp (1 + |h|)^{-d-\alpha}$ and the space $H_\nu(\Omega)$ equals the classical Sobolev-Slobodeckij space $H^{\alpha/2}(\Omega)$. In this case, we denote the space $V_\nu(\Omega | \mathbb{R}^d)$ by $V^{\alpha/2}(\Omega | \mathbb{R}^d)$. We have $V^{\alpha/2}(\Omega | \mathbb{R}^d) \hookrightarrow L^2(\mathbb{R}^d, (1 + |h|)^{-d-\alpha})$.

Remark 2.23. Note that Lemma 2.16 (i), Lemma 2.17 (i) and Lemma 2.18 (i) imply that the weights $\tilde{\nu}, \nu^*, \bar{\nu}$ respectively define Radon measures on \mathbb{R}^d .

2.4. Dirichlet forms. The discussion of the L^2 -spaces related to $\tilde{\nu}, \nu^*, \bar{\nu}$ together with density results in Theorem 2.11 allows us to define a new interesting Dirichlet form. We refer to [FOT11] for the general theory of Dirichlet forms and their corresponding Markov processes.

The following well-known result is a direct consequence of Theorem 2.11, (ii) and (iii).

Proposition 2.24. *Let Ω be open and bounded with a continuous boundary. Let ν be any Lévy measure. Then each of the three bilinear forms $(\mathcal{E}, V_{\nu,0}(\Omega | \mathbb{R}^d))$, $(\mathcal{E}_\Omega, \overline{C_c^\infty(\Omega)}^{H_\nu(\Omega)})$ and $(\mathcal{E}_\Omega, H_\nu(\Omega))$ is a regular Dirichlet form on $L^2(\Omega)$. The corresponding Markov processes are often called killed, censored resp. reflected Lévy process.*

An important side result of our work is the following theorem, which implies the existence of a strong Markov process, which can be seen as another kind of *reflected* jump process with regards to Ω . The theorem is an improvement over [Von21, Theorem 4.4], see Remark 2.37. Its proof follows from Theorem 2.11, (iv).

Theorem 2.25. *Let ν be unimodal with full support and $\Omega \subset \mathbb{R}^d$ be open and bounded with a Lipschitz-continuous boundary. Let ν' be any of the measures $\tilde{\nu}, \nu^*, \bar{\nu}$ on \mathbb{R}^d . Then the bilinear form $(\mathcal{E}, V_\nu(\Omega | \mathbb{R}^d))$ is a regular Dirichlet form on $L^2(\mathbb{R}^d; \nu')$.*

2.5. Classical Sobolev spaces. Let us comment on the connection of the spaces under consideration with classical Sobolev spaces. Recall that for an open set $\Omega \subset \mathbb{R}^d$, $H^1(\Omega)$ denotes the classical Sobolev space endowed with the norm

$$\|u\|_{H^1(\Omega)}^2 = \|u\|_{L^2(\Omega)}^2 + \|\nabla u\|_{L^2(\Omega)}^2.$$

Proposition 2.26. *The following embeddings hold true:*

$$H^1(\mathbb{R}^d) \hookrightarrow H_\nu(\mathbb{R}^d) \hookrightarrow V_\nu(\Omega | \mathbb{R}^d) \hookrightarrow H_\nu(\Omega) \hookrightarrow L^2(\Omega).$$

Here we equip $V_\nu(\Omega | \mathbb{R}^d)$ with the norm $\|\cdot\|_{V_\nu(\Omega | \mathbb{R}^d)}$.

Proof. The proof is standard. For $u \in H^1(\mathbb{R}^d)$ and $h \in \mathbb{R}^d$ we have

$$\int_{\mathbb{R}^d} (u(x+h) - u(x))^2 dx = \|u(\cdot+h) - u(\cdot)\|_{L^2(\mathbb{R}^d)}^2 \leq 4(1 \wedge |h|^2) \|u\|_{H^1(\mathbb{R}^d)}^2.$$

Integrating both sides over \mathbb{R}^d with respect to the measure $\nu(h)dh$ yields

$$\iint_{\mathbb{R}^d \mathbb{R}^d} (u(x) - u(y))^2 \nu(x-y) dx dy \leq 4 \|\nu\|_{L^1(\mathbb{R}^d, 1 \wedge |h|^2 dh)} \|u\|_{H^1(\mathbb{R}^d)}^2. \quad (2.7)$$

This proves the first embedding, the remaining ones are trivial. \square

Recall that $H_0^1(\Omega)$ is the closure of $C_c^\infty(\Omega)$ with respect to the $H^1(\Omega)$. $H_0^1(\Omega)$ also coincides with the closure of $C_c^\infty(\Omega)$ in $H^1(\mathbb{R}^d)$. Recall the definition of $V_{\nu,0}(\Omega|\mathbb{R}^d)$ from (2.2). Note that, the zero extension to \mathbb{R}^d of any function in $H_0^1(\Omega)$ belongs to $H^1(\mathbb{R}^d)$.

Proposition 2.27. *Let $\Omega \subset \mathbb{R}^d$ be open. The following embeddings hold true:*

$$H_0^1(\Omega) \hookrightarrow V_{\nu,0}(\Omega|\mathbb{R}^d) \hookrightarrow H_\nu(\Omega)$$

where elements of $H_0^1(\Omega)$ are extended by zero off Ω . If additionally $\partial\Omega$ is continuous,

$$V_{\nu,0}(\Omega|\mathbb{R}^d) \hookrightarrow \overline{C_c^\infty(\Omega)}^{H_\nu(\Omega)} \hookrightarrow L^2(\Omega).$$

It is worth noticing that not every function $u \in \overline{C_c^\infty(\Omega)}^{H_\nu(\Omega)}$ has its extension by zero in $H_\nu(\mathbb{R}^d)$. Indeed for this to hold, one would need

$$\int_{\Omega} |u(x)|^2 dx \int_{\Omega^c} \nu(x-y) dy < \infty.$$

This condition is not always true since the measure ν might be very singular at the origin. This observation shows that for some appropriate domain Ω and for some appropriate measure ν , e.g. $\nu(h) = |h|^{-d-3/2}$, the spaces $\overline{C_c^\infty(\Omega)}^{H_\nu(\Omega)}$ and $V_{\nu,0}(\Omega|\mathbb{R}^d)$ are strictly different although they both possess $C_c^\infty(\Omega)$ as dense subspace. This effect is purely nonlocal. Recall that elements of $H_0^1(\Omega)$ can be isometrically extended by zero on \mathbb{R}^d as functions of $H^1(\mathbb{R}^d)$.

Now assume Ω is a Lipschitz domain (or more generally an H^1 -extension domain). Let $\bar{u} \in H^1(\mathbb{R}^d)$ be an extension of a function $u \in H^1(\Omega)$ with $\|\bar{u}\|_{H^1(\mathbb{R}^d)} \leq C\|u\|_{H^1(\Omega)}$ for some constant C depending only on Ω and d . Within the estimate (2.7) we easily get the following continuous embedding

Proposition 2.28. *Assume $\Omega \subset \mathbb{R}^d$ is an H^1 -extension domain then*

$$H^1(\Omega) \hookrightarrow H_\nu(\Omega).$$

The latter embedding may fails when Ω is not an extension domain (see [Fog21b, Counterexample 3.8] or [NPV12, Example 9.1]). $H^1(\Omega)$ can be viewed as limiting space of a sequence of nonlocal spaces of type $H_\nu(\Omega)$ and $V_\nu(\Omega|\mathbb{R}^d)$, see [Fog21b, FG20] and [FG20, Fog21a] for additional results.

2.6. Trace space of $V_\nu(\Omega|\mathbb{R}^d)$. The main goal of this subsection is to discuss the trace space for $V_\nu(\Omega|\mathbb{R}^d)$ similarly as one does for the classical Sobolev space $H^1(\Omega)$. Note that elements of $V_\nu(\Omega|\mathbb{R}^d)$ are defined on the whole of \mathbb{R}^d , thus the trace space consists of functions defined on Ω^c . This contrasts with the local situation, where the trace space of $H^1(\Omega)$ consists of functions defined on the boundary $\partial\Omega$. Unless otherwise stated, we assume that ν is fully supported on \mathbb{R}^d and $V_\nu(\Omega|\mathbb{R}^d)$ is endowed with the norm $\|\cdot\|_{V_\nu(\Omega|\mathbb{R}^d)}$. Note that, when studying the fractional Laplace Operator, trace spaces related to $V_\nu(\Omega|\mathbb{R}^d)$ when $\nu(h) = |h|^{-d-\alpha}$ for $h \neq 0$ and $0 < \alpha < 2$, have already been considered in [DK20], [BGPR20] and [DTWY21]. Below, we comment on how our general approach relates to these studies.

Definition 2.29. We define $T_\nu(\Omega^c)$ as the vector space of restrictions to $\mathbb{R}^d \setminus \Omega$ of functions of $V_\nu(\Omega|\mathbb{R}^d)$, i.e.,

$$T_\nu(\Omega^c) = \{v : \Omega^c \rightarrow \mathbb{R} \text{ measurable} \mid v = u|_{\Omega^c} \text{ with } u \in V_\nu(\Omega|\mathbb{R}^d)\}.$$

We endow $T_\nu(\Omega^c)$ with its natural norm,

$$\|v\|_{T_\nu(\Omega^c)} = \inf\{\|u\|_{V_\nu(\Omega|\mathbb{R}^d)} : u \in V_\nu(\Omega|\mathbb{R}^d) \text{ with } v = u|_{\Omega^c}\}.$$

Theorem 2.30. *The space $T_\nu(\Omega^c)$ is a separable Hilbert space with the scalar product*

$$(u, v)_{T_\nu(\Omega^c)} = \frac{1}{4} \left(\|u + v\|_{T_\nu(\Omega^c)}^2 - \|u - v\|_{T_\nu(\Omega^c)}^2 \right).$$

Proof. Since the norm $\|\cdot\|_{V_\nu(\Omega|\mathbb{R}^d)}$ verifies the parallelogram law so does $\|\cdot\|_{T_\nu(\Omega^c)}$. Thus $(\cdot, \cdot)_{T_\nu(\Omega^c)}$ is a scalar product on $T_\nu(\Omega^c)$ with associated norm $\|\cdot\|_{T_\nu(\Omega^c)}$. Noting that $T_\nu(\Omega^c)$ and the quotient space $V_\nu(\Omega|\mathbb{R}^d)/V_{\nu,0}(\Omega|\mathbb{R}^d)$ are identical with equal norm in space and that $V_{\nu,0}(\Omega|\mathbb{R}^d)$ is a closed subspace of $V_\nu(\Omega|\mathbb{R}^d)$, one concludes that $T_\nu(\Omega^c)$ is complete. \square

The main question now is whether the same space $T_\nu(\Omega^c)$ can be defined intrinsically. In other words, given a measurable function $v : \Omega^c \rightarrow \mathbb{R}$, how can one decide whether the function belongs to $T_\nu(\Omega^c)$ or not. In the local situation, it is possible to define a scalar product on the space $H^{1/2}(\partial\Omega)$ when Ω is a Lipschitz domain, see [Din96] for a proof.

We study this question in two settings, the one of [DK20] and the one of [BGPR20]. For the special case $\nu(h) = |h|^{-d-\alpha}$ for $h \neq 0$ with $0 < \alpha < 2$, it is proved in [DK20, Theorem 3] that for $v \in V_\nu(\Omega|\mathbb{R}^d)$ it holds

$$\iint_{\Omega^c \Omega^c} \frac{(v(x) - v(y))^2}{(|x - y| + \delta_x + \delta_y)^{d+\alpha}} dx dy < \infty. \quad (2.8)$$

Moreover, it is shown that, if (2.8) holds true for $v = g$ on Ω^c , there exists $u_g \in V_\nu(\Omega|\mathbb{R}^d)$ such that $u_g|_{\Omega^c} = g$ and

$$\iint_{(\Omega^c \times \Omega^c)^c} \frac{(u_g(x) - u_g(y))^2}{|x - y|^{d+\alpha}} dx dy \asymp \iint_{\Omega^c \Omega^c} \frac{(v(x) - v(y))^2}{(|x - y| + \delta_x + \delta_y)^{d+\alpha}} dx dy \quad (2.9)$$

with the constants independent on g and u_g . Therefore we obtain in this case

$$T_\nu(\Omega^c) = \left\{ v : \Omega^c \rightarrow \mathbb{R} \text{ meas.} \mid \iint_{\Omega^c \Omega^c} \frac{(v(x) - v(y))^2}{(|x - y| + \delta_x + \delta_y)^{d+\alpha}} dx dy < \infty \right\}, \quad (2.10)$$

which we will make use of in [Proposition 2.31](#).

Next, let us summarize the results of [\[BGPR20\]](#), which are established under the following condition: One assumes that ν is radial and its profile $\nu \in C^2((0, \infty))$ satisfies for some $C_1, C_2 > 0$ and $\beta \in (0, 2)$

$$\begin{aligned} |\nu'(r)| + |\nu''(r)| &\leq C_1 \nu(r) & (r > 1), \\ \nu(\lambda r) &\leq C_2 \lambda^{d-\beta} \nu(r) & (0 < r, \lambda \leq 1), \\ \nu(r) &\leq C_2 \nu(r+1) & (r \geq 1). \end{aligned} \tag{A_\nu}$$

Assume Ω^c satisfies the volume density condition (in some literatures, Ω^c is called to be a d -set), i.e., there exists a constant $c > 0$ such that $|\Omega^c \cap B_r(x)| \geq cr^d$ for all $x \in \partial\Omega$ and all $r > 0$. By the Lebesgue density theorem, the latter condition automatically implies that $|\partial\Omega| = 0$. Then under [\(A_\nu\)](#) [\[BGPR20, Theorem 2.3\]](#) proves that, for any $g \in T_\nu(\Omega^c)$ there exists a unique $u_g \in V_\nu(\Omega | \mathbb{R}^d)$ such that $u_g|_{\Omega^c} = g$ with

$$\mathcal{H}_\Omega(g, g) := \iint_{\Omega^c \Omega^c} (g(x) - g(y))^2 \gamma_\Omega(x, y) dx dy = \iint_{(\Omega^c \times \Omega^c)^c} (u_g(x) - u_g(y))^2 \nu(x-y) dx dy. \tag{2.11}$$

The function u_g satisfies the weak formulation

$$\iint_{(\Omega^c \times \Omega^c)^c} (u_g(x) - u_g(y))(\phi(x) - \phi(y)) \nu(x-y) dx dy = 0 \quad \text{for all } \phi \in V_{\nu,0}(\Omega | \mathbb{R}^d) \tag{2.12}$$

and the interaction kernel $\gamma_\Omega(x, y)$ is given via the Poisson kernel of Ω by the formula

$$\gamma_\Omega(x, y) = \int_\Omega P_\Omega(x, z) \nu(z-y) dz \quad x, y \in \Omega^c.$$

Furthermore, a precise formula for u_g in Ω is given by the Poisson integral

$$u_g(x) = P_\Omega[g](x) = \int_{\Omega^c} g(y) P_\Omega(x, y) dy \quad x \in \Omega.$$

From this, it is easy to show that

$$T_\nu(\Omega^c) = \left\{ v : \Omega^c \rightarrow \mathbb{R} \text{ meas. } \mathcal{H}_\Omega(v, v) = \iint_{\Omega^c \Omega^c} (v(x) - v(y))^2 \gamma_\Omega(x, y) dx dy < \infty \right\}$$

which is precisely the exterior space introduced in [\[BGPR20\]](#). With this definition, the connection between $T_\nu(\Omega^c)$ and $V_\nu(\Omega | \mathbb{R}^d)$ is less visible. For $v \in T_\nu(\Omega^c)$, by definition of $\|\cdot\|_{T_\nu(\Omega^c)}$, we have

$$\begin{aligned} \|v\|_{T_\nu(\Omega^c)}^2 &= \inf \left\{ \|u\|_{V_\nu(\Omega | \mathbb{R}^d)}^2 : u \in V_\nu(\Omega | \mathbb{R}^d) \text{ with } v = u|_{\Omega^c} \right\} \\ &\geq \inf \left\{ \int_\Omega |u(x)|^2 dx : u \in V_\nu(\Omega | \mathbb{R}^d) \text{ with } v = u|_{\Omega^c} \right\} + \mathcal{H}_\Omega(v, v). \end{aligned}$$

It is rather challenging to find or to estimate the quantity

$$\inf \left\{ \int_\Omega |u(x)|^2 dx : u \in V_\nu(\Omega | \mathbb{R}^d) \text{ with } v = u|_{\Omega^c} \right\}.$$

Remind that our goal here is to explicitly define a norm which is equivalent to $\|\cdot\|_{T_\nu(\Omega^c)}$ and has less visible connection to $V_\nu(\Omega|\mathbb{R}^d)$. To this end, we bring into play the norm $\|\cdot\|_{V_\nu(\Omega|\mathbb{R}^d)}^*$ defined in [Lemma 2.16](#).

Proposition 2.31. *Assume Ω is open and bounded, such that Ω^c satisfies the volume density condition. Assume ν satisfies (A_ν) . Let $\tilde{\nu}$ and $\|\cdot\|_{V_\nu(\Omega|\mathbb{R}^d)}^*$ be respectively the measure and the norm given in [Lemma 2.16](#). Then*

$$T_\nu(\Omega^c) = \left\{ v : \Omega^c \rightarrow \mathbb{R} \text{ meas. } \mathcal{H}_\Omega(v, v) = \iint_{\Omega^c \Omega^c} (v(x) - v(y))^2 \gamma_\Omega(x, y) dx dy < \infty \right\}$$

and the norms $\|\cdot\|_{T_\nu(\Omega^c)}$, $\|\cdot\|_{T_\nu(\Omega^c)}^*$ and $\|\cdot\|_{T_\nu(\Omega^c)}^\dagger$ are all equivalent, where

$$\begin{aligned} \|v\|_{T_\nu(\Omega^c)}^* &= \inf\{\|u\|_{V_\nu(\Omega|\mathbb{R}^d)}^* : u \in V_\nu(\Omega|\mathbb{R}^d) \text{ with } v = u|_{\Omega^c}\} \\ \|v\|_{T_\nu(\Omega^c)}^{\dagger 2} &= \int_{\Omega^c} |v(x)|^2 \tilde{\nu}(x) dx + \iint_{\Omega^c \Omega^c} (v(x) - v(y))^2 \gamma_\Omega(x, y) dx dy. \end{aligned}$$

Next, consider $\nu(h) = (2 - \alpha)|h|^{-d-\alpha}$ for $h \neq 0$ with $0 < \alpha < 2$ fixed and $\tilde{\nu}(h) = \frac{1}{(1+|h|)^{d+\alpha}}$. Set $\delta_z = \text{dist}(z, \partial\Omega)$. Then

$$T_\nu(\Omega^c) = \left\{ v : \Omega^c \rightarrow \mathbb{R} \text{ meas. } \left| \iint_{\Omega^c \Omega^c} \frac{(v(x) - v(y))^2}{(|x - y| + \delta_x + \delta_y)^{d+\alpha}} dx dy < \infty \right. \right\}$$

and the aforementioned norms are equivalent to the norm

$$\|v\|_{T_\nu(\Omega^c)}^{\prime 2} = \int_{\Omega^c} \frac{|v(x)|^2}{(1 + |x|)^{d+\alpha}} dx + \iint_{\Omega^c \Omega^c} \frac{(v(x) - v(y))^2}{(|x - y| + \delta_x + \delta_y)^{d+\alpha}} dx dy.$$

Remark 2.32. In the case $\nu_\alpha(h) = (2 - \alpha)|h|^{-d-\alpha}$ for $h \neq 0$ with given $\alpha \in (0, 2)$, it is interesting to understand the limiting behaviour of the comparability estimate for $\|v\|_{T_{\nu_\alpha}(\Omega^c)}^{\prime}$ and $\|v\|_{T_{\nu_\alpha}(\Omega^c)}^*$ as $\alpha \rightarrow 2^-$. Recent upcoming results of Th. Hensiek and F. Grube show that one can modify the norm $\|v\|_{T_\nu(\Omega^c)}^{\prime}$ so that $\|v\|_{T_{\nu_\alpha}(\Omega^c)}^{\prime}$ would converge to $\|v\|_{H^{1/2}(\partial\Omega)}$ as $\alpha \rightarrow 2^-$.

Proof. The equivalence between $\|\cdot\|_{T_\nu(\Omega^c)}$ and $\|\cdot\|_{T_\nu(\Omega^c)}^*$ is an immediate consequence of [Lemma 2.16](#). By (2.11) it follows that,

$$\begin{aligned} \|v\|_{T_\nu(\Omega^c)}^{*2} &= \inf\{\|u\|_{V_\nu(\Omega|\mathbb{R}^d)}^{*2} : u \in V_\nu(\Omega|\mathbb{R}^d) \text{ with } v = u|_{\Omega^c}\} \\ &\geq \inf\left\{ \int_{\mathbb{R}^d} |u(x)|^2 \tilde{\nu}(x) dx : u \in V_\nu(\Omega|\mathbb{R}^d) \text{ with } v = u|_{\Omega^c} \right\} + \mathcal{H}_\Omega(v, v) \\ &\geq \int_{\Omega^c} |v(x)|^2 \tilde{\nu}(x) dx + \mathcal{H}_\Omega(v, v), \end{aligned}$$

which establishes $\|v\|_{T_\nu(\Omega^c)}^\dagger \leq \|v\|_{T_\nu(\Omega^c)}^*$. Hence the identity $id : (T_\nu(\Omega^c), \|\cdot\|_{T_\nu(\Omega^c)}^*) \rightarrow (T_\nu(\Omega^c), \|\cdot\|_{T_\nu(\Omega^c)}^\dagger)$ is continuous. The space $(T_\nu(\Omega^c), \|\cdot\|_{T_\nu(\Omega^c)}^*)$ is a Hilbert space since $\|\cdot\|_{T_\nu(\Omega^c)}$ and $\|\cdot\|_{T_\nu(\Omega^c)}^{*2}$ are equivalent. Also, using the Fatou lemma one can easily show

that $(T_\nu(\Omega^c), \|\cdot\|_{T_\nu(\Omega^c)}^\dagger)$ is a Hilbert space. As consequence of the open mapping theorem the norms $\|\cdot\|_{T_\nu(\Omega^c)}^\dagger$ and $\|\cdot\|_{T_\nu(\Omega^c)}^*$ are equivalent.

Next, let us consider $\nu(h) = (2 - \alpha)|h|^{-d-\alpha}$ for $h \neq 0$ with $0 < \alpha < 2$ fixed. From [DK20, Theorem 3], see (2.9) and (2.10), we conclude that there exists a constant $C > 0$ such that for all $v \in T_\nu(\Omega^c)$, $\|v\|_{T_\nu(\Omega^c)}^* \leq C\|v\|_{T_\nu(\Omega^c)}'$. The equivalence between $\|\cdot\|_{T_\nu(\Omega^c)}^*$ and $\|\cdot\|_{T_\nu(\Omega^c)}'$ follows once again by the open mapping theorem. \square

Remark 2.33. We emphasize that the nonlocal trace does not need any special construction via functional analysis or density arguments. Since Ω^c is a d -dimensional manifold, it makes sense to consider the restriction of a measurable function on Ω^c . No regularity of Ω resp. $\partial\Omega$ is required. In the classical local situation, the definition of a trace of a Sobolev function u on the boundary $\partial\Omega$ requires some smoothness of both, u and $\partial\Omega$.

Let us collect some basics results concerning the trace space $T_\nu(\Omega^c)$. With the aid of Lemma 2.16 we get the following.

Proposition 2.34. *The trace map $\text{Tr} : V_\nu(\Omega|\mathbb{R}^d) \rightarrow L^2(\Omega^c, \tilde{\nu})$ with $u \mapsto \text{Tr}(u) = u|_{\Omega^c}$ has the following properties: (a) $\text{Tr}(V_\nu(\Omega|\mathbb{R}^d)) = T_\nu(\Omega^c)$, (b) $\ker(\text{Tr}) = V_{\nu,0}(\Omega|\mathbb{R}^d)$ and (c) Tr is linear and continuous. Moreover, $T_\nu(\Omega^c)$ is dense in $L^2(\Omega^c, \tilde{\nu})$.*

Proof. This is indeed, is a direct consequence of Lemma 2.16 since $u \in L^2(\mathbb{R}^d; \tilde{\nu})$ for all $u \in V_\nu(\Omega|\mathbb{R}^d)$ so that $\text{Tr}(u) \in L^2(\Omega^c, \tilde{\nu})$ in particular Tr is well defined. Moreover, by Lemma 2.16 there exists a constant $C > 0$ such that,

$$\|\text{Tr}(u)\|_{L^2(\Omega^c, \tilde{\nu})} \leq \|u\|_{L^2(\mathbb{R}^d, \tilde{\nu})} \leq C\|u\|_{V_\nu(\Omega|\mathbb{R}^d)} \quad \text{for all } u \in V_\nu(\Omega|\mathbb{R}^d). \quad (2.13)$$

The zero extension to Ω of elements $C_c^\infty(\overline{\Omega^c})$ are in $V_\nu(\Omega|\mathbb{R}^d)$. Thus $C_c^\infty(\overline{\Omega^c})$ is contained in $T_\nu(\Omega^c)$ which implies that $T_\nu(\Omega^c)$ is dense in $L^2(\Omega^c, \tilde{\nu})$ since $C_c^\infty(\overline{\Omega^c})$ is dense in $L^2(\Omega^c, \tilde{\nu})$ \square

Remark 2.35. One may view the objects $L^2(\Omega^c, \tilde{\nu})$, $T_\nu(\Omega^c)$, $V_\nu(\Omega|\mathbb{R}^d)$ and $V_{\nu,0}(\Omega|\mathbb{R}^d)$ respectively as the nonlocal counterpart of $L^2(\partial\Omega)$, $H^{1/2}(\partial\Omega)$, $H^1(\Omega)$ and $H_0^1(\Omega)$. Indeed, (i) the classical trace operator $\gamma_0 : H^1(\Omega) \rightarrow L^2(\partial\Omega)$ whenever it exists is linear continuous, (ii) $\gamma_0(H^1(\Omega)) = H^{1/2}(\partial\Omega)$ and (iii) $\ker(\gamma_0) = H_0^1(\Omega)$.

Proposition 2.36. *Let $C_c^\infty(\overline{\Omega^c}) = C_c^\infty(\mathbb{R}^d)|_{\Omega^c}$ be set of restrictions on Ω^c of C^∞ functions on \mathbb{R}^d with compact support. Then $C_c^\infty(\overline{\Omega^c})$ is dense in $T_\nu(\Omega^c)$.*

Proof. For $v \in T_\nu(\Omega^c)$ we write $v = u|_{\Omega^c}$ with $u \in V_\nu(\Omega|\mathbb{R}^d)$. From [FKV20] we know that there exists $u_n \in C_c^\infty(\mathbb{R}^d)$ such that, $\|u_n - u\|_{V_\nu(\Omega|\mathbb{R}^d)} \rightarrow 0$. Put, $v_n = u_n|_{\Omega^c}$ by (2.13) we get

$$\|v_n - v\|_{T_\nu(\Omega^c)} \leq \|u_n - u\|_{V_\nu(\Omega|\mathbb{R}^d)} \rightarrow 0. \quad \square$$

Remark 2.37. Let us comment on certain function spaces that are introduced in [Von21] in order to study some reflected jump Markov processes. Instead of the natural energy space $V_\nu(\Omega|\mathbb{R}^d)$ from [FKV15], the author considers $V_\nu(\Omega|\mathbb{R}^d) \cap L^2(\mathbb{R}^d, m)$ with $m(x) = \mathbf{1}_\Omega(x) + \mu(x)\mathbf{1}_{\Omega^c}(x)$ and $\mu(x) = \int_\Omega \nu(x-y)dy$ for $x \in \Omega^c$. It is proved in [Von21, Lemma 2.2 (iii)] that $L^2(\Omega^c, \mu)$ is the trace space of $V_\nu(\Omega|\mathbb{R}^d) \cap L^2(\mathbb{R}^d, m)$. Note that $V_\nu(\Omega|\mathbb{R}^d) \cap L^2(\mathbb{R}^d, m)$ and its trace space $L^2(\Omega^c, \mu)$ are much smaller than $V_\nu(\Omega|\mathbb{R}^d)$ resp. $T_\nu(\Omega^c)$, which leads to the following issues.

- When Ω is bounded, constant functions belong to $V_\nu(\Omega|\mathbb{R}^d)$ and do not belong to $V_\nu(\Omega|\mathbb{R}^d) \cap L^2(\mathbb{R}^d, m)$ in general. Thus in term of trace, $x \mapsto \mathbb{1}_{\Omega^c}(x)$ belongs to $T_\nu(\Omega^c)$ but not necessarily to $L^2(\Omega^c, \mu)$. Several natural Dirichlet problems, e.g. for the fractional Laplace operator, cannot be formulated with the help of $L^2(\Omega^c, \mu)$.
- See [Theorem 2.25](#) for a regular Dirichlet form leading to the existence of reflected jump processes.
- Given a function $v \in L^2(\Omega^c, \mu)$, its extension by zero $v_0 = v\mathbb{1}_{\Omega^c}$ belongs to $V_\nu(\Omega|\mathbb{R}^d) \cap L^2(\mathbb{R}^d, m)$ because of

$$\iint_{(\Omega^c \times \Omega^c)^c} (v_0(x) - v_0(y))^2 \nu(x-y) dx dy = 2 \int_{\Omega^c} |v(x)|^2 \mu(x) dx.$$

Moreover, the space $L^2(\Omega^c, \mu)$ is continuously embedded in $T_\nu(\Omega^c)$, indeed,

$$\|v\|_{T_\nu(\Omega^c)} \leq \|v_0\|_{V_\nu(\Omega|\mathbb{R}^d)} \leq \sqrt{2} \|v\|_{L^2(\Omega^c, \mu)}.$$

The fact that the extension by zero belongs to the energy space for any given function in the trace space, is rather particular.

Since $V_\nu(\Omega|\mathbb{R}^d) \cap L^2(\mathbb{R}^d, m)$ resp. its trace space $L^2(\Omega^c, \mu)$ are small compared to the spaces $V_\nu(\Omega|\mathbb{R}^d)$ resp. $T_\nu(\Omega^c)$, the range of possible nonlocal Dirichlet and Neumann problems is rather small.

3. COMPACT EMBEDDINGS AND POINCARÉ INEQUALITY

In this section we prove compact embeddings of the spaces $H_\nu(\Omega)$, $V_\nu(\Omega|\mathbb{R}^d)$ and $V_{\nu,0}(\Omega|\mathbb{R}^d)$ into $L^2(\Omega)$. Our result on global compactness, [Theorem 3.10](#), requires some regularity assumptions on Ω and ν , which we introduce and discuss in [Section 3.1](#). In [Section 3.2](#) we establish global compactness using ideas from [\[JW19\]](#) and [\[DMT18\]](#). Note that [\[CDP18, Theorem 2.2\]](#) is a related result. However, the proof therein seems to be valid only for domains that can be decomposed as a finite union of cubes. We circumvent this issue by an approximation argument near the boundary of Ω .

3.1. Assumptions on the Lévy measure. The definitions and most of the results of [Section 2.2](#) do not require assumptions on the Lévy measure ν beyond the classical Lévy condition [\(L\)](#). In this subsection we collect further conditions on ν required for the compactness results in [Section 3.2](#). Recall the concept of unimodality from [Definition 2.4](#). We will prove a Poincaré-inequality in [Theorem 3.12](#) for unimodal Lévy measures with full support.

Definition 3.1. Assume $\Omega \subset \mathbb{R}^d$ is open and bounded, and $\nu : \mathbb{R}^d \setminus \{0\} \rightarrow [0, \infty)$ satisfies [\(L\)](#). We say that (ν, Ω) is in the class \mathcal{A}_0 if

(\mathcal{A}_0) ν is unimodal and has full support.

Note that, in the class \mathcal{A}_0 , ν is not necessarily singular near 0. In order to establish compactness results in [Section 3.2](#) we will discuss different assumptions. Note that [\(L\)](#) and unimodality do not imply any lower bound on ν , even $\nu = 0$ would be allowed. Furthermore, if $\nu \in L^1(\mathbb{R}^d)$, then the spaces $V_\nu(\Omega|\mathbb{R}^d) \cap L^2(\mathbb{R}^d)$ and $H_\nu(\mathbb{R}^d)$ coincide with $L^2(\mathbb{R}^d)$, which

is not locally compactly embedded into $L^2(\Omega)$. For the remainder of this section, we assume that ν satisfies **(L)** and

$$\int_{\mathbb{R}^d} \nu(h) dh = \infty. \quad (\text{I})$$

Under **(L)**, condition **(I)** obviously follows from $|h|^d \nu(h) \rightarrow \infty$ as $|h| \rightarrow 0$. As explained in **Corollary 3.7**, **(L)** and **(I)** imply local compactness of $H_\nu(\Omega)$ and $V_\nu(\Omega | \mathbb{R}^d)$ in $L^2(\Omega)$. Let us introduce conditions on Ω and ν under which we are able to establish global compactness results.

Definition 3.2. Assume $\Omega \subset \mathbb{R}^d$ is open and bounded, and $\nu : \mathbb{R}^d \setminus \{0\} \rightarrow [0, \infty)$ satisfies **(L)** and **(I)**. We say that (ν, Ω) is in the class \mathcal{A}_i ($i = 1, 2, 3$), if

(A₁) ... there exists an $H_\nu(\Omega)$ -extension operator $E : H_\nu(\Omega) \rightarrow H_\nu(\mathbb{R}^d)$, i.e., there is $C(\nu, \Omega, d) > 0$ such that for every $u \in H_\nu(\Omega)$, $\|u\|_{H_\nu(\mathbb{R}^d)} \leq C\|u\|_{H_\nu(\Omega)}$ and $Eu|_\Omega = u$.

(A₂) ... $\partial\Omega$ is Lipschitz-continuous, ν is radial and $q(\delta) \xrightarrow{\delta \rightarrow 0} \infty$ where

$$q(\delta) := \frac{1}{\delta^2} \int_{B_\delta(0)} |h|^2 \nu(h) dh. \quad (3.1)$$

(A₃) ... the following condition holds true: $\tilde{q}(\delta) \xrightarrow{\delta \rightarrow 0} \infty$ where

$$\tilde{q}(\delta) := \inf_{a \in \partial\Omega} \int_{\Omega_\delta} \nu(h - a) dh \quad (3.2)$$

with $\Omega_\delta = \{x \in \Omega : \text{dist}(x, \partial\Omega) > \delta\}$.

Note that monotonicity of ν is not required by any of the conditions above. The class \mathcal{A}_1 is well studied in the literature for the case of the fractional Laplace operator. For example, it is shown in [Zho15] that Ω is an extension domain for $H^{\alpha/2}(\Omega)$, $\alpha \in (0, 2)$, if and only if Ω is a d -set and thus, $(|\cdot|^{-d-\alpha}, \Omega)$ is an element of \mathcal{A}_1 .

The class \mathcal{A}_2 is easy to understand because the conditions on Ω and ν do no interact. If Ω is a bounded Lipschitz domain and ν satisfies **(L)** and

$$\lim_{|h| \rightarrow 0} |h|^d \nu(h) = \infty, \quad (I')$$

then (ν, Ω) is in the class \mathcal{A}_2 . Indeed, for $R > 0$ sufficiently large there is $\delta_0 > 0$ such that $|h|^d \nu(h) \geq 2R$ whenever $|h| \leq \delta_0$. Thus $q(\delta) \geq |\mathbb{S}^{d-1}|R$ if $0 < \delta < \delta_0$. This shows that **(3.1)** is verified.

The class \mathcal{A}_3 and condition **(3.2)** are more involved due to a certain correlation between Ω and the singularity of ν near the origin. Let us first provide an example of ν and Ω such that \mathcal{A}_3 fails. In the Euclidean plane consider $\nu(h) = |h|^{-2-\alpha} \mathbf{1}_V(h)$ with $V = \{(x_1, x_2) \in \mathbb{R}^2 : |x_1| < |x_2|\}$ and $\Omega = \{(x_1, x_2) \in \mathbb{R}^2 : 4|x_2 - 6| < x_1, 0 < x_1 < 4\}$ whose boundary is continuous. Considering $a = (0, 6) \in \partial\Omega$ one has $V \cap (\Omega_\delta - a) = \emptyset$ for every $\delta > 0$, see **Figure 1**. Therefore $\tilde{q}(\delta) \leq \int_{\Omega_\delta} \nu(h - a) dh = 0$ and the condition **(3.2)** fails.

Next, let us provide a positive result. Note that for every domain Ω and every $\delta > 0$ we know $\tilde{q}(\delta) < \infty$ because, for each $a \in \partial\Omega$ and each $\delta > 0$, $\Omega_\delta \subset B_\delta^c(a)$, which implies by **(L)** $\tilde{q}(\delta) \leq \int_{B_\delta^c(0)} \nu(h) dh < \infty$. We will show that $\partial\Omega \in C^{1,1}$ is sufficient. Recall that Ω is of class $C^{1,1}$ if for every $a \in \partial\Omega$ there is $r > 0$ for which $B_r(a) \cap \partial\Omega = \{x = (x', x_d) \in B_r(a) :$

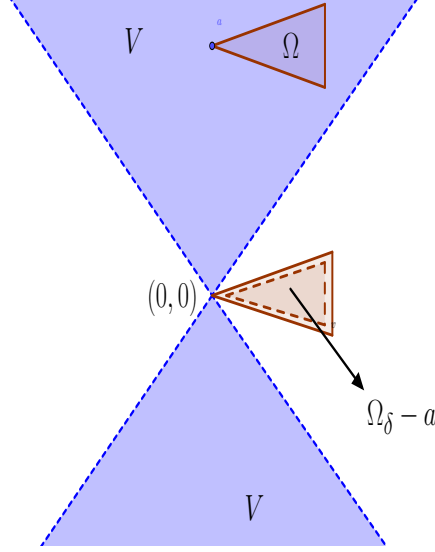


FIGURE 1. Example of $(\nu, \Omega) \notin \mathcal{A}_3$

$x_d = \gamma(x')$ represents the graph of a $C^{1,1}$ function $\gamma : \mathbb{R}^{d-1} \rightarrow \mathbb{R}$. That is to say γ is a C^1 function whose gradient is Lipschitz. The main result in [Bar09] shows that an open set Ω is $C^{1,1}$ if and only if Ω satisfies the interior and exterior sphere condition. We say that Ω satisfies the interior and exterior sphere condition at some scale $r > 0$ if for every $a \in \partial\Omega$ one can find $a' \in \Omega$ and $a'' \in \overline{\Omega^c}$ for which $B_r(a') \subset \Omega$, $B_r(a'') \subset \overline{\Omega^c}$ and $\overline{B_r(a')} \cap \overline{B_r(a'')} = \{a\}$. Note that, the interior and exterior sphere condition holds for every scale $r \in (0, r_0)$ once it holds for r_0 . This characterization entails that a $C^{1,1}$ set Ω is a d -set (or *volume density condition* according to some authors): that is, there exist two positive constants $c > 0$ and $r_0 > 0$ such that for every $r \in (0, r_0)$ and every $a \in \partial\Omega$

$$|\Omega \cap B_r(a)| \geq cr^d.$$

Proposition 3.3. *Assume ν satisfies (L) and (I'). Assume that Ω satisfies the following strong volume density condition: there exist positive constants $\tau > 1$, $\delta_0 > 0$ and $c > 0$ such that for all $\delta \in (0, \delta_0)$ and $a \in \partial\Omega$*

$$|\Omega_\delta \cap B_{\tau\delta}(a)| \geq c\delta^d.$$

Then $(\nu, \Omega) \in \mathcal{A}_3$.

Remark 3.4.

- (i) Any bounded $C^{1,1}$ -domain $\Omega \subset \mathbb{R}^d$ satisfies the aforementioned strong volume density condition. Fix $a \in \partial\Omega$, by the interior sphere condition, consider $\delta \in (0, \delta_0/4)$ for some δ_0 sufficiently small. Let $x \in \Omega$ depending on a and δ such that $B_{2\delta}(x) \subset \Omega$, $\text{dist}(x, \partial\Omega) = |x - a| = 2\delta$ and $\overline{B_{2\delta}(x)} \cap \partial\Omega = \{a\}$ then obviously, $B_\delta(x) \subset \Omega_\delta \cap B_{2\delta}(x) \subset \Omega_\delta \cap B_{4\delta}(a)$. This yields

$$|\Omega_\delta \cap B_{4\delta}(a)| \geq c_d \delta^d, \quad \text{with } c_d = |B_1(0)|. \quad (3.3)$$

- (ii) It is interesting to know whether for small $\delta > 0$, Ω_δ inherits the regularity of Ω . As proven in [GT15, Section 6.14] if Ω is of class C^k with $k \geq 2$ then so is Ω_δ .

Proof. Let $R > 0$ and consider $\tau > 1$, $\delta_0 > 0$ as above such that if $0 < \delta < \delta_0$ then $|h|^d \nu(h) \geq R$ for $|h| < \delta$. Fix $a \in \partial\Omega$, since $|\Omega_\delta \cap B_{\tau\delta}(a)| \geq c\delta^d$ for all $0 < \delta < \delta_0$. Therefore, recalling that $\nu(h-a) \geq R|h-a|^{-d} \geq \frac{R}{\tau^d \delta^d}$ when $h \in B_{\tau\delta}(a)$ we have

$$\int_{\Omega_\delta} \nu(h-a) dh \geq \frac{R}{\tau^d \delta^d} \int_{\Omega_\delta \cap B_{\tau\delta}(a)} dh = \frac{R}{\tau^d \delta^d} |\Omega_\delta \cap B_{\tau\delta}(a)| \geq \frac{c}{\tau^d} R.$$

Finally,

$$\tilde{q}(\delta) \geq \frac{c}{\tau^d} R$$

which means that (3.2) is verified since R can be arbitrarily large. \square

3.2. Local and global compactness results. Before citing a result on local compactness, we recall a well-known result about convolutions.

Lemma 3.5 (Corollary 4.28 of [Bre10]). *Let $w \in L^1(\mathbb{R}^d)$. Then the convolution operator*

$$T_w : L^2(\mathbb{R}^d) \rightarrow L^2(\mathbb{R}^d), \quad T_w u = w * u$$

is continuous with $\|T_w\|_{\mathcal{L}(L^2(\mathbb{R}^d), L^2(\mathbb{R}^d))} \leq \|w\|_{L^1(\mathbb{R}^d)}$. Moreover, $T_w : L^2(\mathbb{R}^d) \rightarrow L^2(K)$ is compact for any compact subset $K \subset \mathbb{R}^d$.

We present the local compactness result [JW19] that we are going to use in the sequel.

Theorem 3.6. *Let $\nu : \mathbb{R}^d \setminus \{0\} \rightarrow [0, \infty)$ be a measurable symmetric function such that (I) holds and*

$$\int_{\mathbb{R}^d \setminus B_\delta(0)} \nu(h) dh < \infty \quad \text{for every } \delta > 0. \quad (3.4)$$

Then the embedding $H_\nu(\mathbb{R}^d) \hookrightarrow L^2(\mathbb{R}^d)$ is locally compact. Moreover, for $\Omega \subset \mathbb{R}^d$ open and bounded, the embedding $V_{\nu,0}(\Omega | \mathbb{R}^d) \hookrightarrow L^2(\Omega)$ is compact.

It is worth mentioning that an earlier analogous result is provided in [PZ17, Proposition 6] for periodic functions on the torus. The assertion of **Theorem 3.6** is proved in [JW19, Theorem 1.1] under the additional assumption that ν satisfies (L). Looking at the proof carefully one sees that conditions (I) and (3.4) is sufficient. This would allow to consider densities ν with a very strong singularity at the origin, e.g., $\nu(h) = |h|^{-d-\beta}$ for $h \neq 0$ with any $\beta > 0$.

As a straightforward consequence of **Theorem 3.6** we have the following local compactness of $H_\nu(\Omega)$ in $L^2(\Omega)$.

Corollary 3.7. *Let $\Omega \subset \mathbb{R}^d$ be open but not necessarily bounded. Assume $\nu : \mathbb{R}^d \setminus \{0\} \rightarrow \mathbb{R}$ fulfills conditions (L) and (I). The embedding $H_\nu(\Omega) \hookrightarrow L^2(\Omega)$ is locally compact. Furthermore, for every bounded sequence $(u_n)_n$ there exists $u \in H_\nu(\Omega)$ and subsequence $(u_{n_j})_j$ converging to u in $L^2_{\text{loc}}(\Omega)$.*

Proof. There is no loss of generality if we assume that a function $u \in H_\nu(\Omega)$ is extended by zero outside of Ω . For $\varphi \in C_c^\infty(\mathbb{R}^d)$, with $\text{supp } \varphi \subset \Omega$, the map $J_\varphi : H_\nu(\Omega) \rightarrow H_\nu(\mathbb{R}^d)$,

with $J_\varphi u = u\varphi$ is continuous and is thus locally compact by [Theorem 3.6](#). Therefore the embedding $H_\nu(\Omega) \hookrightarrow L^2(\Omega)$ is locally compact. Indeed, for $u \in H_\nu(\Omega)$ we have

$$\begin{aligned} [u(x)\varphi(x) - u(y)\varphi(y)]^2 &= [u(x)(\varphi(x) - \varphi(y)) + \varphi(y)(u(x) - u(y))]^2 \\ &\leq 2\|\varphi\|_{W^{1,\infty}(\mathbb{R}^d)}^2 [|u(x)|^2(1 \wedge |x - y|^2) + \mathbf{1}_{\text{supp } \varphi}(y)(u(x) - u(y))^2]. \end{aligned}$$

As $\text{supp } \varphi \subset \Omega$ is compact, consider $0 < r \leq \text{dist}(\text{supp } \varphi, \partial\Omega)$. Then integrating both side of the above estimate over $\Omega \times \mathbb{R}^d$ with respect to the measure $\nu(x - y)dydx$, yields the continuity of J_φ as follows

$$\begin{aligned} &\iint_{\mathbb{R}^d \times \mathbb{R}^d} [u(x)\varphi(x) - u(y)\varphi(y)]^2 \nu(x - y)dydx \\ &\leq 2\|\varphi\|_{W^{1,\infty}(\mathbb{R}^d)}^2 \int_{\Omega} |u(x)|^2 dx \int_{\mathbb{R}^d} (1 \wedge |h|^2) \nu(h)dh \\ &\quad + \iint_{\Omega} (u(x) - u(y))^2 \nu(x - y)dydx + \int_{\Omega} |u(x)|^2 dx \int_{B_r(0)} \nu(h)dh \\ &\leq C_\varphi \|u\|_{H_\nu(\Omega)}^2. \end{aligned}$$

Next, we prove the second statement. Consider $\Omega'_\delta = \{x \in \Omega : |x| < \frac{1}{\delta}, \text{dist}(x, \partial\Omega) > \delta\} = \Omega_\delta \cap B_{\frac{1}{\delta}}(0)$ and define $\varphi_\delta(x) = \eta_{\delta/4} * \mathbf{1}_{\Omega'_{\delta/2}}(x)$ for $\delta > 0$ small enough, where $\eta_\delta(x) = \frac{1}{\delta^a} \eta(\frac{x}{\delta})$ with $\eta \in C_c^\infty(\mathbb{R}^d)$ is supported in the unit ball $B_1(0)$, $\eta \geq 0$ and $\int_{\mathbb{R}^d} \phi(x)dx = 1$. So that $\varphi_\delta \in C_c^\infty(\Omega)$, $\varphi_\delta = 1$ on Ω'_δ , $0 \leq \varphi_\delta \leq 1$ and $|\nabla\varphi_\delta| \leq c/\delta$. Given a sequence $(u_n)_n$ that is bounded in $H_\nu(\Omega)$, the previous observation entails that for each $\delta > 0$ the sequence $(u_n\varphi_\delta)_n$ there exist a subsequence $n_j = n_j(\delta)$, $j \geq 1$, and $u^\delta \in L^2(\Omega'_\delta)$ such that the sequence $(u_n)_n$, (as $u_n\varphi_\delta = u_n$ in Ω'_δ) converges to some u^δ in $L^2(\Omega'_\delta)$ and almost everywhere in Ω'_δ . Employing the standard the Cantor's diagonalization procedure with $\delta = \frac{1}{2^k}$, one can construct a subsequence $(u_{n_j})_j$ converging subsequence in $L^2_{\text{loc}}(\Omega)$ and almost everywhere in Ω to some function u . Fatou's lemma implies that $u \in H_\nu(\Omega)$ since

$$\|u\|_{H_\nu(\Omega)} \leq \liminf_{j \rightarrow \infty} \|u_{n_j}\|_{H_\nu(\Omega)} < \infty.$$

□

Let us turn to the result on global compactness. We will need some estimates near the boundary $\partial\Omega$. We begin with the following estimate involving cut-off functions.

Lemma 3.8. *Let $\Omega \subset \mathbb{R}^d$ be open and bounded. Assume $\nu : \mathbb{R}^d \setminus \{0\} \rightarrow [0, \infty)$ is even and measurable. Let $0 < \delta < \frac{1}{3} \text{diam}(\Omega)$. Let $\varphi \in C_c^\infty(\Omega)$ be such that ¹ $\varphi = 0$ on Ω_δ , $\varphi = 1$ on $\Omega \setminus \Omega_{\delta/2}$, $0 \leq \varphi \leq 1$ and $|\nabla\varphi| \leq c/\delta$. For every $u \in H_\nu(\Omega)$, the following estimate holds true*

$$\iint_{\Omega\Omega} ([u\varphi](x) - [u\varphi](y))^2 \nu(x - y)dx dy \leq \frac{C}{\delta^2} \int_{\Omega_{\delta/2}} |u(x)|^2 dx + 8 \iint_{\Omega\Omega} (u(x) - u(y))^2 \nu(x - y)dx dy \quad (3.5)$$

¹Take $\varphi = 1 - \varphi_\delta$ with $\varphi_\delta = \eta_{\delta/4} * \mathbf{1}_{\Omega'_{\delta/2}}$ as in the proof of [Corollary 3.7](#).

where, $C = 8c^2 \int_{B_R(0)} |h|^2 \nu(h) dh$ and $R = \text{diam}(\Omega)$.

Proof. Firstly, since $\varphi = 1$ on $\Omega \setminus \Omega_{\delta/2}$ we have

$$\begin{aligned} \iint_{\Omega \setminus \Omega_{\delta/2} \times \Omega \setminus \Omega_{\delta/2}} ([u\varphi](x) - [u\varphi](y))^2 \nu(x-y) dx dy &= \iint_{\Omega \setminus \Omega_{\delta/2} \times \Omega \setminus \Omega_{\delta/2}} (u(x) - u(y))^2 \nu(x-y) dx dy \\ &\leq \iint_{\Omega \times \Omega} (u(x) - u(y))^2 \nu(x-y) dx dy. \end{aligned}$$

In view of the fact that $0 \leq \varphi \leq 1$ and $|\varphi(x) - \varphi(y)| \leq c/\delta |x - y|$ for every $x, y \in \Omega$, we have

$$\begin{aligned} ([u\varphi](x) - [u\varphi](y))^2 &= (\varphi(y)(u(x) - u(y)) + u(x)(\varphi(x) - \varphi(y)))^2 \\ &\leq 2(u(x) - u(y))^2 + \frac{2c^2}{\delta^2} |u(x)|^2 |x - y|^2. \end{aligned} \quad (3.6)$$

Secondly, noticing that $\Omega \subset B_R(x)$ for all $x \in \Omega$ where $R = \text{diam}(\Omega)$ and integrating both sides of (3.6) over $\Omega_{\delta/2} \times \Omega_{\delta/2}$ we obtain the following estimate

$$\begin{aligned} &\iint_{\Omega_{\delta/2} \times \Omega_{\delta/2}} ([u\varphi](x) - [u\varphi](y))^2 \nu(x-y) dx dy \\ &\leq 2 \iint_{\Omega \times \Omega} (u(x) - u(y))^2 \nu(x-y) dx dy + \frac{2c^2}{\delta^2} \int_{\Omega_{\delta/2}} |u(x)|^2 dx \int_{B_R(x)} |x - y|^2 \nu(x-y) dy \\ &= 2 \iint_{\Omega \times \Omega} (u(x) - u(y))^2 \nu(x-y) dx dy + \frac{2c^2}{\delta^2} \left(\int_{B_R(0)} |h|^2 \nu(h) dh \right) \int_{\Omega_{\delta/2}} |u(x)|^2 dx. \end{aligned}$$

Likewise to the previous estimate, using (3.6) we get

$$\begin{aligned} &\iint_{\Omega_{\delta/2} \times \Omega \setminus \Omega_{\delta/2}} ([u\varphi](x) - [u\varphi](y))^2 \nu(x-y) dx dy \\ &\leq 2 \iint_{\Omega \times \Omega} (u(x) - u(y))^2 \nu(x-y) dx dy + \frac{2c^2}{\delta^2} \left(\int_{B_R(0)} |h|^2 \nu(h) dh \right) \int_{\Omega_{\delta/2}} |u(x)|^2 dx. \end{aligned}$$

Altogether, the desired estimate follows as claimed since by symmetry we can use the split

$$\iint_{\Omega \times \Omega} = \iint_{\Omega_{\delta/2} \times \Omega_{\delta/2}} + 2 \iint_{\Omega_{\delta/2} \times \Omega \setminus \Omega_{\delta/2}} + \iint_{\Omega \setminus \Omega_{\delta/2} \times \Omega \setminus \Omega_{\delta/2}}.$$

□

The next lemma plays a crucial role in the sequel.

Lemma 3.9. *Assume that $\Omega \subset \mathbb{R}^d$ is open and bounded, and $\nu : \mathbb{R}^d \setminus \{0\} \rightarrow [0, \infty)$ is radial. There exists $C > 0$ such that for every $u \in L^2(\Omega)$ and every positive $\delta < \frac{1}{3} \text{diam}(\Omega)$*

$$\int_{\Omega} |u(x)|^2 dx \leq \frac{C}{\delta^2 \tilde{q}(2\delta)} \int_{\Omega_{\delta/2}} |u(x)|^2 dx + \frac{8}{\tilde{q}(2\delta)} \iint_{\Omega \Omega} (u(x) - u(y))^2 \nu(x-y) dx dy, \quad (3.7)$$

with \tilde{q} as in (3.2). Moreover, if Ω has a Lipschitz boundary, then

$$\int_{\Omega} |u(x)|^2 dx \leq \frac{C}{\delta^2 q(2\delta)} \int_{\Omega_{\delta/2}} |u(x)|^2 dx + \frac{8}{q(2\delta)} \iint_{\Omega \Omega} (u(x) - u(y))^2 \nu(x-y) dx dy, \quad (3.8)$$

with q as in (3.1).

Proof. Let φ be as in Lemma 3.8 and fix $a \in \partial\Omega$. A routine check reveals that $\Omega_{2\delta} - a \subset \Omega_{\delta} - x$ for every $x \in \Omega \cap B_{\delta}(a)$ which yields,

$$\begin{aligned} \int_{\Omega \cap B_{\delta}(a)} [\varphi u]^2(x) dx \int_{\Omega_{\delta}} \nu(x-y) dy &\geq \int_{\Omega \cap B_{\delta}(a)} [\varphi u]^2(x) dx \int_{\Omega_{\delta} - x} \nu(h) dh \\ &\geq \int_{\Omega \cap B_{\delta}(a)} [\varphi u]^2(x) dx \int_{\Omega_{2\delta} - a} \nu(h) dh \geq \tilde{q}(2\delta) \int_{\Omega \cap B_{\delta}(a)} [\varphi u]^2(x) dx. \end{aligned}$$

By a compactness argument there exist $a^1, a^2, \dots, a^n \in \partial\Omega$ such that $\partial\Omega \subset \bigcup_{i=1}^n B_{\delta/2}(a^i)$. So

that, $\Omega \setminus \Omega_{\delta/2} \subset \bigcup_{i=1}^n \Omega \cap B_{\delta}(a^i) \subset \Omega \setminus \Omega_{\delta}$. $\varphi u = 0$ on $\Omega_{\delta/2}$ trivially implies $\varphi u = 0$ on Ω_{δ} .

Therefore with the aid of the above estimate we obtain the following estimate

$$\begin{aligned} \iint_{\Omega \Omega} ([\varphi u](x) - [\varphi u](y))^2 \nu(x-y) dx dy &\geq 2 \iint_{\Omega \setminus \Omega_{\delta} \Omega_{\delta}} [\varphi u]^2(x) \nu(x-y) dx dy \\ &\geq \int_{\bigcup_{i=1}^n \Omega \cap B_{\delta}(a^i)} [\varphi u]^2(x) dx \int_{\Omega_{\delta}} \nu(x-y) dy \geq 2\tilde{q}(2\delta) \int_{\bigcup_{i=1}^n \Omega \cap B_{\delta}(a^i)} [\varphi u]^2(x) dx \\ &\geq 2\tilde{q}(2\delta) \int_{\Omega \setminus \Omega_{\delta/2}} [\varphi u]^2(x) dx = 2\tilde{q}(2\delta) \int_{\Omega \setminus \Omega_{\delta/2}} |u(x)|^2(x) dx. \end{aligned}$$

This combined with (3.5) gives (3.7). Next, let us assume that Ω is a Lipschitz domain. Following the same procedure as in [Pon04, Eq. (22) and Eq. (23)] one arrives at

$$2\delta^2 \iint_{\Omega \Omega} ([\varphi u](x) - [\varphi u](y))^2 \nu(x-y) dx dy \geq \left(\int_{B_{2\delta}(0)} |h|^2 \nu(h) dh \right) \int_{\Omega \setminus \Omega_{\delta/2}} [\varphi u]^2(x) dx.$$

that is,

$$\iint_{\Omega \Omega} ([\varphi u](x) - [\varphi u](y))^2 \nu(x-y) dx dy \geq 2q(2\delta) \int_{\Omega \setminus \Omega_{\delta/2}} [\varphi u]^2(x) dx.$$

which combined with (3.5) implies (3.8). \square

Here is our global compactness result.

Theorem 3.10. *Let Ω be an open bounded subset of \mathbb{R}^d and $\nu : \mathbb{R}^d \setminus \{0\} \rightarrow [0, \infty]$ be a measurable function. If the couple (ν, Ω) belongs to the class \mathcal{A}_i , $i = 1, 2, 3$ then the embedding $H_\nu(\Omega) \hookrightarrow L^2(\Omega)$ is compact. In particular, the embedding $V_\nu(\Omega | \mathbb{R}^d) \hookrightarrow L^2(\Omega)$ is compact.*

Proof of Theorem 3.10. Given the continuous embedding $V_\nu(\Omega | \mathbb{R}^d) \hookrightarrow H_\nu(\Omega)$, it will be sufficient only to prove that the embedding $H_\nu(\Omega) \hookrightarrow L^2(\Omega)$ is compact. For (ν, Ω) belonging to the class \mathcal{A}_1 the result is a direct consequence of [Theorem 3.6](#). Now assume (ν, Ω) belongs to the class \mathcal{A}_2 (resp. \mathcal{A}_3) then for $\varepsilon > 0$ there is $\delta > 0$ small enough such that $8q^{-1}(2\delta) < \varepsilon$ (resp. $8\tilde{q}^{-1}(2\delta) < \varepsilon$) If $(u_n)_n$ is a bounded sequence of $H_\nu(\Omega)$ then [Corollary 3.7](#) infers the existence of a subsequence $(u_{n_j})_j$ of $(u_n)_n$ converging to some $u \in H_\nu(\Omega)$ in $L^2(\Omega_{\delta/2})$ i.e. $\|u_{n_j} - u\|_{L^2(\Omega_{\delta/2})} \rightarrow 0$ as $j \rightarrow \infty$. In any case, in view of [Lemma 3.9](#), passing to the limsup in [\(3.7\)](#) or in [\(3.8\)](#) applied to $u_{n_j} - u$ we get

$$\limsup_{j \rightarrow \infty} \int_{\Omega} |u_{n_j}(x) - u(x)|^2 dx \leq M\varepsilon$$

where

$$M = 2\|u\|_{H_\nu(\Omega)}^2 + 2 \sup_n \|u_n\|_{H_\nu(\Omega)}^2 < \infty.$$

Finally, $\limsup_{j \rightarrow \infty} \|u_{n_j} - u\|_{L^2(\Omega)} = 0$ since $\varepsilon > 0$ is arbitrarily chosen. Which achieves the proof. \square

Remark 3.11. A noteworthy consequence of what we have obtained so far is that, for an appropriate choice of ν , the well-known Rellich-Kondrachev compact embeddings $H_0^1(\Omega) \hookrightarrow L^2(\Omega)$ and $H^1(\Omega) \hookrightarrow L^2(\Omega)$ when Ω is Lipschitz, respectively derive from [Theorem 3.6](#) combined with the continuous embedding $H_0^1(\Omega) \hookrightarrow V_{\nu,0}(\Omega | \mathbb{R}^d)$ and from [Theorem 3.10](#) combined with the continuous embedding $H^1(\Omega) \hookrightarrow H_\nu(\Omega)$ when Ω is Lipschitz.

The efforts made to establish [Theorem 3.10](#) will be rewarded for the elaboration of the Poincaré type inequality which will be useful in the forthcoming section.

Theorem 3.12 (Poincaré inequality). *Let Ω be an open bounded subset of \mathbb{R}^d and $\nu : \mathbb{R}^d \setminus \{0\} \rightarrow [0, \infty]$ be a measurable function with full support. Assume the couple (ν, Ω) belongs to one of the class \mathcal{A}_i , $i = 0, 1, 2, 3$. Then there is exists a positive constant $C = C(d, \Omega, \nu)$ depending only on d , Ω and ν such that*

$$\|u - f_\Omega u\|_{L^2(\Omega)}^2 \leq C \iint_{\Omega} (u(x) - u(y))^2 \nu(x-y) dx dy \quad \text{for all } u \in L^2(\Omega), \quad (3.9)$$

and hence

$$\|u - f_\Omega u\|_{L^2(\Omega)}^2 \leq C\mathcal{E}(u, u) \quad \text{for all } u \in V_\nu(\Omega | \mathbb{R}^d). \quad (3.10)$$

Proof. Assume such constant does not exist then we can find a sequence $(u_n)_n$ elements of $H_\nu(\Omega)$ such that for every n , $f_\Omega u_n = 0$, $\|u_n\|_{L^2(\Omega)} = 1$ and

$$\iint_{\Omega\Omega} (u_n(x) - u_n(y))^2 \nu(x-y) dx dy \leq \frac{1}{2^n}.$$

The sequence $(u_n)_n$ is thus bounded in $H_\nu(\Omega)$ which by [Theorem 3.10](#) is compactly embedded in $L^2(\Omega)$ whenever (ν, Ω) is in the class \mathcal{A}_i , $i = 1, 2, 3$. Therefore, if it is the case, passing through a subsequence, $(u_n)_n$ converges in $L^2(\Omega)$ to some function u . Clearly it follows that $\int_\Omega u = 0$ and $\|u\|_{L^2(\Omega)} = 1$. Moreover, by Fatou's Lemma we have

$$\iint_{\Omega\Omega} (u(x) - u(y))^2 \nu(x-y) dx dy \leq \liminf_{n \rightarrow \infty} \iint_{\Omega\Omega} (u_n(x) - u_n(y))^2 \nu(x-y) dx dy = 0$$

which implies that u equals the constant function $x \mapsto \int_\Omega u = 0$ almost everywhere on Ω . This goes against the fact that $\|u\|_{L^2(\Omega)} = 1$ hereby showing that our initial assumption was wrong.

Next assume (ν, Ω) belongs to the class \mathcal{A}_0 then, as ν has full a support, is unimodal and Ω is bounded, there is a constant $c > 0$ such that $\nu(x-y) \geq c$ for all $x, y \in \Omega$. Using this and Jensen's inequality we obtain the desired inequality as follows:

$$\begin{aligned} \iint_{\Omega\Omega} (u(x) - u(y))^2 \nu(x-y) dx dy &\geq c|\Omega| \int_\Omega \int_\Omega (u(x) - u(y))^2 dx dy \\ &\geq c|\Omega| \|u - \int_\Omega u\|_{L^2(\Omega)}^2. \end{aligned}$$

The proof is complete because [\(3.10\)](#) is a consequence of [\(3.9\)](#). □

The above Poincaré inequality [\(3.9\)](#)-[\(3.10\)](#) can be seen has the nonlocal counterpart of the classical Poincaré inequality which state that, for a connected bounded Lipschitz domain Ω , there is $C > 0$ for which

$$\|u - \int_\Omega u\|_{L^2(\Omega)} \leq C \|\nabla u\|_{L^2(\Omega)}, \quad \text{for all } u \in L^2(\Omega)$$

where by convention we assume $\|\nabla u\|_{L^2(\Omega)} = \infty$ if $|\nabla u|$ is not in $L^2(\Omega)$. Along side to this we also recall the classical Poincaré-Friedrichs inequality: there is $C > 0$ such that

$$\|u\|_{L^2(\Omega)} \leq C \|\nabla u\|_{L^2(\Omega)} \quad \text{for all } u \in H_0^1(\Omega).$$

In the same spirit, as we will see below the corresponding nonlocal Poincaré-Friedrichs inequality $V_{\nu,0}(\Omega | \mathbb{R}^d)$ (which we recall is the closure of the $C_c^\infty(\Omega)$ in $V_\nu(\Omega | \mathbb{R}^d)$) is much more easier to obtain and no compactness argument is required. This provides an easier alternative proof to the Poincaré-Friedrichs inequality from [\[FKV15, Lemma 2.7\]](#). Furthermore, under the condition that the embedding is $V_{\nu,0}(\Omega | \mathbb{R}^d) \hookrightarrow L^2(\Omega)$ is compact, a similar inequality is proved in [\[JW19\]](#) wherein the authors only assume Ω to be bounded in one direction.

Theorem 3.13 (Poincaré-Friedrichs inequality). *Let $\Omega \subset \mathbb{R}^d$ be open and bounded. Let $\nu : \mathbb{R}^d \setminus \{0\} \rightarrow [0, \infty)$ be a symmetric function such that one of the two conditions holds true:*

- (i) $\nu \mathbb{1}_{\mathbb{R}^d \setminus B_R}$ is nontrivial and integrable for $R = \text{diam}(\Omega)$,
- (ii) $\nu \in L^1(\mathbb{R}^d)$ and $|\{\nu > 0\}| > 0$.

Then for some constant $C = C(d, \Omega, \nu) > 0$

$$\|u\|_{L^2(\Omega)}^2 \leq C \mathcal{E}(u, u) \quad \text{for all } u \in V_{\nu,0}(\Omega | \mathbb{R}^d). \quad (3.11)$$

Proof. Set $R = \text{diam}(\Omega)$. Then for all $x \in \Omega$ we have $B_R^c(x) \subset \Omega^c$. For $u \in V_{\nu,0}(\Omega | \mathbb{R}^d)$ we recall that $u = 0$ a.e on Ω^c . Thus,

$$\begin{aligned} \mathcal{E}(u, u) &= \frac{1}{2} \iint_{\Omega\Omega} (u(x) - u(y))^2 \nu(x-y) dx dy + \int_{\Omega} |u(x)|^2 dx \int_{\Omega^c} \nu(x-y) dy \\ &\geq 2 \int_{\Omega} |u(x)|^2 dx \int_{B_R^c(x)} \nu(x-y) dy = 2 \|\nu_R\|_{L^1(\mathbb{R}^d)} \|u\|_{L^2(\Omega)}^2. \end{aligned}$$

Take $C = (2\|\nu_R\|_{L^1(\mathbb{R}^d)})^{-1}$ with $\nu_R = \nu \mathbf{1}_{\mathbb{R}^d \setminus B_R(0)}$. This settles the first case. The second case is treated in [FKV15, Lemma 2.7]. \square

Remark 3.14. Note that a Poincaré-Friedrichs inequality of the form

$$\|u\|_{L^2(\Omega)}^2 \leq C \iint_{\Omega\Omega} (u(x) - u(y))^2 \nu(x-y) dx dy \quad (u \in C_c^\infty(\Omega)). \quad (3.12)$$

does not hold in general, independently of whether the embedding $H_\nu(\Omega) \hookrightarrow L^2(\Omega)$ is compact or not. For example, consider $\nu(h) = |h|^{-d-\alpha}$ with $0 < \alpha < 1$. Then, $C_c^\infty(\Omega)$ is dense in $H^{\alpha/2}(\Omega)$ but $H^{\alpha/2}(\Omega)$ contains all constant functions. Thus (3.12) fails. Note that, in the case $\nu(h) = |h|^{-d-\alpha}$, $\alpha \in (0, 2)$, a necessary and sufficient condition on Ω for (3.12) to hold is provided in [DK21a].

4. EXISTENCE OF WEAK SOLUTIONS AND SPECTRAL DECOMPOSITION

This section is devoted to the following results: well-posedness of the Neumann problem in [Theorem 4.11](#), the spectral decomposition of the corresponding operator in [Theorem 4.14](#), the Robin problem in [Theorem 4.15](#), and the definition of the nonlocal Dirichlet-to-Neumann map in [Theorem 4.19](#) together with its spectral decomposition in [Theorem 4.22](#). We refer the reader to [Section 1](#) for comments about related expositions in the literature.

Throughout this section, $\Omega \subset \mathbb{R}^d$ is assumed to be open. We recall that the function $\nu : \mathbb{R}^d \setminus \{0\} \rightarrow [0, \infty]$ is assumed to be symmetric and to satisfy the Lévy integrability condition [\(L\)](#). Let $k : \mathbb{R}^d \times \mathbb{R}^d \setminus \text{diag} \rightarrow [0, \infty)$ be symmetric and measurable such that for some $\Lambda \geq 1$

$$\Lambda^{-1} \nu(y-x) \leq k(x, y) \leq \Lambda \nu(y-x) \quad (x, y \in \mathbb{R}^d) \quad (\text{E})$$

We will formulate well-posedness results for equations $Lu = f$ in Ω , where

$$Lu(x) = \text{p.v.} \int_{\mathbb{R}^d} (u(y) - u(x)) k(x, y) dy. \quad (4.1)$$

Note that the expression $Lu(x)$ does not exist in general if u is smooth. One would require additional assumptions on k . Note that L can be understood as an integro-differential operator. The aforementioned phenomenon is similar to the fact that expressions like $\text{div}(A(x)\nabla u(x))$ do not exist in general for smooth functions u without further assumptions on the matrix $A(x)$. Given functions $u, v \in V_\nu(\Omega | \mathbb{R}^d)$, we define a bilinear form \mathcal{E} by

$$\mathcal{E}(u, v) = \frac{1}{2} \iint_{(\Omega^c \times \Omega^c)^c} (u(x) - u(y))(v(x) - v(y)) k(x, y) dx dy. \quad (4.2)$$

Note that under the condition [\(E\)](#) the expression $\mathcal{E}(u, v)$ is well defined for $u, v \in V_\nu(\Omega | \mathbb{R}^d)$.

Definition 4.1. We define a nonlocal operator \mathcal{N} acting on functions $v : \mathbb{R}^d \rightarrow \mathbb{R}$ by

$$\mathcal{N}v(y) = \int_{\Omega} (v(y) - v(x))k(x, y)dx \quad (y \in \Omega^c). \quad (4.3)$$

Note that (4.3) requires some integrability condition of v . If ν is a unimodal Lévy measure, then $\mathcal{N}v(y)$ is well defined for $v \in L^1(\mathbb{R}^d; \widehat{\nu})$, see the beginning of the proof of [Proposition A.2](#). Furthermore, the definition of $\mathcal{N}v(y)$, $y \in \Omega^c$, does not require any principal value integral, because there is a positive distance between y and $\overline{\Omega}$.

Remark 4.2. (i) We work under the assumption (E) in order to establish well-posedness for complement value problem. One could replace this assumption by the assumption

$$\Lambda^{-1} \iint_{(\Omega^c \times \Omega^c)^c} (u(x) - u(y))^2 \nu(x-y)dx dy \leq \mathcal{E}(u, u) \leq \Lambda \iint_{(\Omega^c \times \Omega^c)^c} (u(x) - u(y))^2 \nu(x-y)dx dy \quad (E')$$

for all functions $u \in L^2_{loc}(\mathbb{R}^d)$. This assumption allows for many more general cases of k , see the discussions in [DK20, CS20] (ii) Throughout this section we will work with the weight $\tilde{\nu}$. Analogous results hold true when choosing $\overline{\nu}$ or ν^* from [Definition 2.14](#).

4.1. Neumann boundary condition. In light of the Gauss-Green formula (A.5) it is reasonable to define weak solutions of the Neumann problem under consideration as follows. Assume $\Omega \subset \mathbb{R}^d$ is an open set. Let $f : \Omega \rightarrow \mathbb{R}$ and $g : \mathbb{R}^d \setminus \Omega \rightarrow \mathbb{R}$ be two measurable functions. The Neumann problem for the operator L associate to the data f and g is to find a measurable function $u : \mathbb{R}^d \rightarrow \mathbb{R}$ such that

$$Lu = f \quad \text{in } \Omega \quad \text{and} \quad \mathcal{N}u = g \quad \text{on } \mathbb{R}^d \setminus \Omega. \quad (N)$$

Definition 4.3. Let $f \in V_{\nu}(\Omega | \mathbb{R}^d)'$ and $g \in T_{\nu}(\Omega^c)'$. We say that $u \in V_{\nu}(\Omega | \mathbb{R}^d)$ is a weak solution or a variational solution of the inhomogeneous Neumann problem (N) if

$$\mathcal{E}(u, v) = \langle f, v \rangle + \langle g, v \rangle \quad \text{for all } v \in V_{\nu}(\Omega | \mathbb{R}^d), \quad (V')$$

where we use the natural embedding $V_{\nu}(\Omega | \mathbb{R}^d) \hookrightarrow T_{\nu}(\Omega^c)$. Note that the existence of a solution $u \in V_{\nu}(\Omega | \mathbb{R}^d)$ implies the compatibility condition $\langle f, 1 \rangle + \langle g, 1 \rangle = 0$.

If, in particular, $f \in L^2(\Omega)$ and $g \in L^2(\Omega^c, \tilde{\nu}^{-1})$, then $u \in V_{\nu}(\Omega | \mathbb{R}^d)$ is a weak solution of (N) if

$$\mathcal{E}(u, v) = \int_{\Omega} f(x)v(x)dx + \int_{\Omega^c} g(y)v(y)dy, \quad \text{for all } v \in V_{\nu}(\Omega | \mathbb{R}^d). \quad (V)$$

In this case, the compatibility condition reads

$$\int_{\Omega} f(x)dx + \int_{\Omega^c} g(y)dy = 0. \quad (C)$$

Remark 4.4. The compatibility condition (C) is an implicit necessary requirement. The local counterpart of this compatibility condition, where g is defined on $\partial\Omega$, is given by

$$\int_{\Omega} f(x)dx + \int_{\partial\Omega} g(y)d\sigma(y) = 0. \quad (4.4)$$

Let us recall that the variational formulation of (1.1) consists of finding $u \in H^1(\Omega)$ such that

$$\int_{\Omega} \nabla u(x) \cdot \nabla v(x) dx = \int_{\Omega} f(x)v(x) dx + \int_{\partial\Omega} g(y)v(y) d\sigma(y), \quad \text{for all } v \in H^1(\Omega).$$

Remark 4.5. (i) Note that [DROV17, Def. 3.6] looks very similar to (V) at first glance. However, the norm of the test space defined in [DROV17, Eq. (3.1)] depends on the Neumann data g , which is not natural. Our test space $V_{\nu}(\Omega | \mathbb{R}^d)$ in the weak formulation (V) does not depend on the Neumann data g . Moreover for the existence of weak solutions to (N), it is sufficient to choose $f \in L^2(\Omega)$ and $g \in L^2(\Omega^c, \tilde{\nu}^{-1})$, see Theorem 4.12. (ii) For non-singular kernels, Definition 4.3 coincides with the definition in [DTZ22, Section 3.2].

The next result shows that both problems (N) and (V) are related under additional regularity assumption.

Proposition 4.6. *Let Ω be an open bounded subset of \mathbb{R}^d with Lipschitz boundary. Assume $k(x, y) = \nu(y - x)$, i.e., $\Lambda = 1$. Let $u \in C_b^2(\mathbb{R}^d)$, $f \in L^2(\Omega)$ and $g \in L^2(\Omega^c, \tilde{\nu}^{-1})$. Then u satisfies (N) if and only if f and g are compatible in the sense of (C) and u satisfies (V).*

Proof. If u solves (N) i.e. $Lu = f$ in Ω and $\mathcal{N}u = g$ on Ω^c , then by the Gauss-Green formula (A.5) we obtain the following

$$\mathcal{E}(u, v) = \int_{\Omega} f(x)v(x) dx + \int_{\Omega^c} g(y)v(y) dy, \quad \text{for all } v \in C_b^1(\mathbb{R}^d). \quad (4.5)$$

As shown in (4.9)-(4.10) below, all terms involve in (4.5) are linear and continuous on $V_{\nu}(\Omega | \mathbb{R}^d)$ with respect to the variable v . Moreover smooth functions of compact support are dense in $V_{\nu}(\Omega | \mathbb{R}^d)$ hence the relation in (4.5) remains true for functions v in $V_{\nu}(\Omega | \mathbb{R}^d)$ that is (V) is satisfied. In particular taking $v = 1$ one gets the condition (C).

Conversely, assume u solves (V) then inserting the Gauss-Green formula (A.5) with $v \in C_b^1(\mathbb{R}^d) \subset V_{\nu}(\Omega | \mathbb{R}^d)$ in (4.5) yields

$$\int_{\Omega} Lu(x)v(x) dx - \int_{\Omega} f(x)v(x) dx = \int_{\Omega^c} g(y)v(y) dy - \int_{\Omega^c} \mathcal{N}u(y)v(y) dy, \quad \text{for all } v \in C_b^1(\mathbb{R}^d).$$

Specializing this relation for $v \in C_c^{\infty}(\Omega)$ and $v \in C_c^{\infty}(\mathbb{R}^d \setminus \overline{\Omega})$ respectively we end up with

$$\begin{aligned} \int_{\Omega} Lu(x)v(x) dx - \int_{\Omega} f(x)v(x) dx &= 0 & \text{for all } v \in C_c^{\infty}(\Omega), \\ \int_{\Omega^c} g(y)v(y) dy - \int_{\Omega^c} \mathcal{N}u(y)v(y) dy &= 0 & \text{for all } v \in C_c^{\infty}(\mathbb{R}^d \setminus \overline{\Omega}). \end{aligned}$$

Recall that, by Proposition A.1, Lu is well defined and bounded. Hence, Lu belongs to $L^2(\Omega)$. Similarly $\mathcal{N}u$ is well defined and bounded, i.e., it belongs to $L^{\infty}(\Omega^c)$. Thus, up to null sets, we conclude from the above equations $Lu = f$ in Ω and $\mathcal{N}u = g$ on $\mathbb{R}^d \setminus \Omega$, which proves (N). \square

Both integrodifferential operators L and \mathcal{N} annihilate additive constants. Whence as long as u is a solution to the system (N) or to the variational problem (V) so does the function $\tilde{u} = u + c$ for any $c \in \mathbb{R}$. Accordingly, both problems are ill-posed in the sense of Hadamard. The situation is likewise in the local setting with the operators L and \mathcal{N} respectively replaced

by the operators $-\Delta$ and $\frac{\partial}{\partial n}$. In order to overcome this issue, it is common to introduce an appropriate function space $V_\nu(\Omega|\mathbb{R}^d)^\perp$ as follows:

$$V_\nu(\Omega|\mathbb{R}^d)^\perp := \left\{ u \in V_\nu(\Omega|\mathbb{R}^d) : \int_\Omega u(x)dx = 0 \right\}.$$

Assuming that Ω is bounded, the space $V_\nu(\Omega|\mathbb{R}^d)^\perp$ endowed with the scalar product of $V_\nu(\Omega|\mathbb{R}^d)$ is Hilbert space as well. Instead of (V) we need to consider the following weak formulations:

$$\mathcal{E}(u, v) = \langle f, v \rangle + \langle g, v \rangle \quad \text{for all } v \in V_\nu(\Omega|\mathbb{R}^d)^\perp, \quad (V'^\perp)$$

$$\mathcal{E}(u, v) = \int_\Omega f(x)v(x)dx + \int_{\Omega^c} g(y)v(y)dy \quad \text{for all } v \in V_\nu(\Omega|\mathbb{R}^d)^\perp. \quad (V^\perp)$$

In contrast to (V), the variational problem (V[⊥]) possesses at most one solution since $\mathcal{E}(\cdot, \cdot)$ defines a scalar product on $V_\nu(\Omega|\mathbb{R}^d)^\perp$. Analogous observations can be made in the local setting by introducing the space $H^1(\Omega)^\perp = \{u \in H^1(\Omega) : \int_\Omega u(x)dx = 0\}$.

By standard procedure, a solution of the variational problem (V) is characterized as a critical point (a minimizer) of the functional

$$\begin{aligned} \mathcal{J}(v) &= \frac{1}{2}\mathcal{E}(v, v) - \int_\Omega f v dx - \int_{\Omega^c} g v dx \\ &= \frac{1}{4} \iint_{(\Omega^c \times \Omega^c)^c} (v(x) - v(y))^2 \nu(x-y) dx dy - \int_\Omega f v dx - \int_{\Omega^c} g v dx. \end{aligned} \quad (4.6)$$

Proposition 4.7. *Let $\Omega \subset \mathbb{R}^d$ be a open set. Then a function $u \in V_\nu(\Omega|\mathbb{R}^d)^\perp$ is a solution to (V[⊥]) if and only if u is a solution of the minimization problem*

$$\mathcal{J}(u) = \min_{v \in V_\nu(\Omega|\mathbb{R}^d)^\perp} \mathcal{J}(v) \quad (M^\perp)$$

Moreover, if $f : \Omega \rightarrow \mathbb{R}$ and $g : \Omega^c \rightarrow \mathbb{R}$ are compatible in the sense of (C), $u \in V_\nu(\Omega|\mathbb{R}^d)^\perp$ solves (V[⊥]) if and only if for any $c \in \mathbb{R}$, $u + c$ solves the variational problem (V) and the latter problem is equivalent to the minimization problem

$$\mathcal{J}(u) = \min_{v \in V_\nu(\Omega|\mathbb{R}^d)} \mathcal{J}(v). \quad (M)$$

Proof. Let $u \in V_\nu(\Omega|\mathbb{R}^d)^\perp$ so that (V[⊥]) holds true for all $v \in V_\nu(\Omega|\mathbb{R}^d)^\perp$. Employing, Cauchy-Schwartz inequality yields

$$\mathcal{E}(u, v) \leq \frac{1}{2}\mathcal{E}(u, u) + \frac{1}{2}\mathcal{E}(v, v) = \mathcal{E}(u, u) - \frac{1}{2}\mathcal{E}(u, u) + \frac{1}{2}\mathcal{E}(v, v).$$

In virtue of (V[⊥]) we get $\mathcal{J}(u) \leq \mathcal{J}(v)$ and thus u solves (M[⊥]).

Conversely assume that u satisfies (M[⊥]) which means that $\mathcal{J}(u) \leq \mathcal{J}(v)$ for all $v \in V_\nu(\Omega|\mathbb{R}^d)^\perp$. For fixed $v \in V_\nu(\Omega|\mathbb{R}^d)^\perp$ the mapping $\mathcal{J}(u + \cdot v) : \mathbb{R} \rightarrow \mathbb{R}$,

$$t \mapsto \mathcal{J}(u + tv) = \mathcal{J}(u) + t \left[\mathcal{E}(u, v) - \int_\Omega f(x)v(x)dx - \int_{\Omega^c} g(y)v(y)dy \right] + \frac{t^2}{2}\mathcal{E}(v, v)$$

is a polynomial of second order. For all $t \in \mathbb{R}$, $u + tv \in V_\nu(\Omega | \mathbb{R}^d)$ and since u minimizes \mathcal{J} we get that $\mathcal{J}(u) \leq \mathcal{J}(u + tv)$ for all $t \in \mathbb{R}$. Thus $\mathcal{J}(u + \cdot v) : \mathbb{R} \rightarrow \mathbb{R}$ has a critical point at $t = 0$ which implies that

$$0 = \lim_{t \rightarrow 0} \frac{\mathcal{J}(u + tv) - \mathcal{J}(u)}{t} = \lim_{t \rightarrow 0} \left[\mathcal{E}(u, v) - \int_{\Omega} f(x)v(x)dx - \int_{\Omega^c} g(y)v(y)dy + \frac{t}{2}\mathcal{E}(v, v) \right]$$

equivalently

$$\mathcal{E}(u, v) = \int_{\Omega} f(x)v(x)dx + \int_{\Omega^c} g(y)v(y)dy.$$

This shows the equivalence between variational problem (V^\perp) and the minimization problem (M^\perp) . Meanwhile, if the compatibility condition (C) holds, then it is easy to observe that the relation in (V^\perp) remains unchanged under additive constant and $\mathcal{J}(v + c) = \mathcal{J}(v)$ for all $v \in V_\nu(\Omega | \mathbb{R}^d)$ and all $c \in \mathbb{R}$. Accordingly, if $u \in V_\nu(\Omega | \mathbb{R}^d)^\perp$ solves (V^\perp) then we have $\mathcal{J}(u + c) = \min_{v \in V_\nu(\Omega | \mathbb{R}^d)} \mathcal{J}(v)$ which, by similar arguments as above, is equivalent to (V) . \square

From [Proposition 4.6](#) and [Proposition 4.7](#) we deduce that, analogous to the case of the Laplace operator, the complement condition $\mathcal{N}u = 0$ turns out to be a natural condition in the variational context:

Corollary 4.8. *Let $f \in L^2(\Omega)$. Assume $u \in V_\nu(\Omega | \mathbb{R}^d)$ minimizes the functional $v \mapsto \frac{1}{2}\mathcal{E}(v, v) - \int_{\Omega} fv$ in the space $V_\nu(\Omega | \mathbb{R}^d)$. Then $\mathcal{N}u = 0$ in Ω^c .*

A different version of this observation is given in [\[DLV21, Theorem 2.1\]](#). [\[MPL19, Theorem 2.8\]](#) is similar in the translation invariant case. We are now in position to state the existence and the uniqueness of a solution to (V^\perp) and hence to (V) up to additive constant. A direct application of the Lax-Milgram lemma leads to the following observation.

Theorem 4.9. *We assume that $\Omega \subset \mathbb{R}^d$ is open and bounded. Let $\nu : \mathbb{R}^d \rightarrow [0, \infty]$ be the density of a symmetric Lévy measure with full support. We further assume that the couple (ν, Ω) belongs to one of the class \mathcal{A}_i , $i = 0, 1, 2, 3$. Let $f \in V_\nu(\Omega | \mathbb{R}^d)'$ and $g \in T_\nu(\Omega^c)'$.*

(i) *There exists a unique solution $u \in V_\nu(\Omega | \mathbb{R}^d)^\perp$ to the problem (V'^\perp) satisfying*

$$\|u\|_{V_\nu(\Omega | \mathbb{R}^d)} \leq C \left(\|f\|_{V_\nu(\Omega | \mathbb{R}^d)'} + \|g\|_{T_\nu(\Omega^c)'} \right)$$

with a positive constant C , which depends only on d, Ω, Λ and ν .

(ii) *Problem (V') is solvable if and only if $\langle f, 1 \rangle + \langle g, 1 \rangle = 0$. All solutions w are of the form $w = u + c$ with $c \in \mathbb{R}$ and satisfy*

$$\|w - \int_{\Omega} w\|_{V_\nu(\Omega | \mathbb{R}^d)} \leq C \left(\|f\|_{V_\nu(\Omega | \mathbb{R}^d)'} + \|g\|_{T_\nu(\Omega^c)'} \right).$$

Proof. The existence and the uniqueness of solutions of (V'^\perp) follow from the Lax-Milgram lemma. The bilinear form $\mathcal{E}(\cdot, \cdot)$ is continuous on $V_\nu(\Omega | \mathbb{R}^d)^\perp$. From the Poincaré inequality [\(3.10\)](#) we conclude

$$\|v\|_{L^2(\Omega)}^2 \leq C\mathcal{E}(v, v) \quad \text{for all } v \in V_\nu(\Omega | \mathbb{R}^d)^\perp$$

for some positive constant C . This implies coercivity of $\mathcal{E}(\cdot, \cdot)$ on $V_\nu(\Omega | \mathbb{R}^d)^\perp$ and we obtain

$$\mathcal{E}(v, v) \geq (1 + C)^{-1} \|v\|_{V_\nu(\Omega | \mathbb{R}^d)}^2. \tag{4.7}$$

Note that, due to the continuity of the trace operator $\text{Tr} : V_\nu(\Omega | \mathbb{R}^d) \rightarrow T_\nu(\Omega^c)$, the mapping $v \mapsto \langle f, v \rangle + \langle g, v \rangle$ is linear and continuous on $V_\nu(\Omega | \mathbb{R}^d)^\perp$. The Lax-Milgram lemma implies (i).

For $v \in V_\nu(\Omega | \mathbb{R}^d)$ set $v = \tilde{v} + c'$ with $c' = \int_\Omega v dx$ so that $\tilde{v} \in V_\nu(\Omega | \mathbb{R}^d)^\perp$. In addition, every constant function $w = c$ belongs to $V_\nu(\Omega | \mathbb{R}^d)$ for every $c \in \mathbb{R}^d$ because Ω is bounded. Hence, $V_\nu(\Omega | \mathbb{R}^d) = V_\nu(\Omega | \mathbb{R}^d)^\perp \oplus \mathbb{R}$. With this observation along with the identity $\mathcal{E}(u + c, v + c') = \mathcal{E}(u, v)$ for all $c, c' \in \mathbb{R}$ and the uniqueness of $u \in V_\nu(\Omega | \mathbb{R}^d)^\perp$ solving (V'^\perp) it becomes easy to check that under the compatibility condition $\langle f, 1 \rangle + \langle g, 1 \rangle = 0$, all solutions of (V') are of the form $u + c$. □

Remark 4.10. It worth to mention that, **Theorem 4.9** (i) implies that the operator $\Phi : V_\nu(\Omega | \mathbb{R}^d)' \times T_\nu(\Omega^c)' \rightarrow V_\nu(\Omega | \mathbb{R}^d)^\perp$ mapping (f, g) to the unique solution $u \in V_\nu(\Omega | \mathbb{R}^d)^\perp$ of the variational problem (V'^\perp) is linear, one-to-one, continuous with

$$\|\Phi(f, g)\|_{V_\nu(\Omega | \mathbb{R}^d)} \leq C \|(f, g)\|_{V_\nu(\Omega | \mathbb{R}^d)' \times T_\nu(\Omega^c)'}$$

Let us apply **Theorem 4.9** in order to prove our main existence result.

Theorem 4.11. *Under the assumptions of **Theorem 4.9** with $f \in L^2(\Omega)$ and $g \in L^2(\Omega^c, \tilde{\nu}^{-1})$ the following holds true:*

(i) *There exists a unique solution $u \in V_\nu(\Omega | \mathbb{R}^d)^\perp$ to the problem (V^\perp) satisfying*

$$\|u\|_{V_\nu(\Omega | \mathbb{R}^d)} \leq C (\|f\|_{L^2(\Omega)} + \|g\|_{L^2(\Omega^c, \tilde{\nu}^{-1})})$$

with a positive constant C , which depends only on d, Ω, Λ and ν .

(ii) *Problem (V) is solvable if and only if (C) holds true. All solutions w are of the form $w = u + c$ with $c \in \mathbb{R}$ and satisfy*

$$\|w - \int_\Omega w\|_{V_\nu(\Omega | \mathbb{R}^d)} \leq C (\|f\|_{L^2(\Omega)} + \|g\|_{L^2(\Omega^c, \tilde{\nu}^{-1})}) . \quad (4.8)$$

Proof. It suffices to show the continuity of the associated linear forms. For $v \in V_\nu(\Omega | \mathbb{R}^d)^\perp$

$$\left| \int_\Omega f v dx \right| \leq \|f\|_{L^2(\Omega)} \|v\|_{L^2(\Omega)} \leq \|f\|_{L^2(\Omega)} \|v\|_{V_\nu(\Omega | \mathbb{R}^d)} . \quad (4.9)$$

From $g \in L^2(\Omega^c, \tilde{\nu}^{-1})$ and the continuity of $\text{Tr} : V_\nu(\Omega | \mathbb{R}^d) \hookrightarrow T_\nu(\Omega^c)$, we obtain

$$\left| \int_{\Omega^c} g(x) v(x) dx \right| \leq \|g\|_{L^2(\Omega^c, \tilde{\nu}^{-1})} \|v\|_{L^2(\Omega^c, \tilde{\nu})} \leq \|g\|_{L^2(\Omega^c, \tilde{\nu}^{-1})} \|v\|_{V_\nu(\Omega | \mathbb{R}^d)} . \quad (4.10)$$

Application of **Theorem 4.9** completes the proof. □

There is an alternative formulation of **Theorem 4.11**, which allows for more general inhomogeneities g . Let us define a modified Neumann problem for the operator L associated to the data f and g as follows:

$$Lu = f \quad \text{in } \Omega \quad \text{and} \quad \mathcal{N}u = g\tilde{\nu} \quad \text{on } \mathbb{R}^d \setminus \Omega. \quad (N_*)$$

Theorem 4.12. *Under the assumptions of **Theorem 4.9** with $f \in L^2(\Omega)$ and $g \in L^2(\Omega^c, \tilde{\nu})$, then the following holds true:*

(i) There exists a unique weak solution $u_* \in V_\nu(\Omega | \mathbb{R}^d)^\perp$ to the problem (N_*) , that is

$$\mathcal{E}(u_*, v) = \int_{\Omega} f(x)v(x)dx + \int_{\Omega^c} g(y)v(y)\tilde{\nu}(y)dy \quad \text{for all } v \in V_\nu(\Omega | \mathbb{R}^d)^\perp. \quad (V_*^\perp)$$

satisfying

$$\|u_*\|_{V_\nu(\Omega | \mathbb{R}^d)} \leq C (\|f\|_{L^2(\Omega)} + \|g\|_{L^2(\Omega^c, \tilde{\nu})})$$

with a positive constant C , which depends only on d, Ω, Λ and ν .

(ii) Problem (V_*) is solvable if and only if (C_*) holds true, where

$$\mathcal{E}(u, v) = \int_{\Omega} f(x)v(x)dx + \int_{\Omega^c} g(y)v(y)\tilde{\nu}(y)dy \quad \text{for all } v \in V_\nu(\Omega | \mathbb{R}^d), \quad (V_*)$$

$$\int_{\Omega} f(x)dx + \int_{\Omega^c} g(y)\tilde{\nu}(y)dy = 0. \quad (C_*)$$

All solutions w_* are of the form $w = u_* + c$ with $c \in \mathbb{R}$ and satisfy

$$\|w - \int_{\Omega} w\|_{V_\nu(\Omega | \mathbb{R}^d)} \leq C (\|f\|_{L^2(\Omega)} + \|g\|_{L^2(\Omega^c, \tilde{\nu})}).$$

The proof of [Theorem 4.12](#) is analogous to the one of [Theorem 4.11](#). Note that, if $g \in L^2(\Omega^c, \tilde{\nu})$, then

$$\left| \int_{\Omega^c} g(x)v(x)\tilde{\nu}(x)dx \right| \leq \|g\|_{L^2(\Omega^c, \tilde{\nu})} \|v\|_{V_\nu(\Omega | \mathbb{R}^d)}.$$

4.2. Neumann eigenvalues of L . Let $f \in L^2(\Omega)$, for $g = 0$ it is worthwhile to see that the variational problem (V) coincides with (V_*) and both correspond to the variational(weak) formulation of the homogeneous Neumann problem $Lu = f$ in Ω and $\mathcal{N}u = 0$ on Ω^c .

Definition 4.13 (Neumann eigenvalue of L). A non-zero function $u \in V_\nu(\Omega | \mathbb{R}^d)$ is called a Neumann eigenfunction of the operator L on Ω if there exists a real number μ , which is the eigenvalue associated to u , such that for all $v \in V_\nu(\Omega | \mathbb{R}^d)$

$$\mathcal{E}(u, v) = \mu \int_{\Omega} u(x)v(x)dx.$$

One formally writes $Lu = \mu u$ in Ω and $\mathcal{N}u = 0$ on Ω^c , which corresponds to the aforementioned weak formulation provided that u is sufficiently regular.

It is worth noticing that, if u is a Neumann eigenfunction of L with associated eigenvalue μ , then either $u \in V_\nu(\Omega | \mathbb{R}^d)^\perp$ when $\mu \neq 0$ or else, $\mu = 0$ and the constant functions $u = c$, $c \in \mathbb{R} \setminus \{0\}$, are the related eigenfunctions.

Theorem 4.14. Assume $\Omega \subset \mathbb{R}^d$ is bounded and open and $\nu : \mathbb{R}^d \setminus \{0\} \rightarrow [0, \infty)$ is the density of a symmetric Lévy measure with full support. Assume that the couple (ν, Ω) belongs to one of the classes \mathcal{A}_i , $i = 1, 2, 3$. Then there exist a sequence $(\phi_n)_{n \in \mathbb{N}_0}$ in $V_\nu(\Omega | \mathbb{R}^d)$, which forms an orthonormal basis of $L^2(\Omega)$, and an increasing sequence of real numbers $0 = \mu_0 < \mu_1 \leq \dots \leq \mu_n \leq \dots$ such that $\mu_n \rightarrow \infty$ as $n \rightarrow \infty$ and each ϕ_n is a Neumann eigenfunction of L with corresponding eigenvalue μ_n . The number of each eigenvalue is given by its geometrical multiplicity.

Proof. For $f_1, f_2 \in L^2(\Omega)$ let us denote $u_{f_k} = \Phi_0(f_k) = \Phi(f_k, 0) \in V_\nu(\Omega | \mathbb{R}^d)^\perp$, $k = 1, 2$ the unique solution of (V^\perp) with Neumann data $f = f_k$ and $g = 0$. Precisely,

$$\mathcal{E}(\Phi_0(f_k), v) = \int_{\Omega} f_k(x)v(x)dx \quad \text{for all } v \in V_\nu(\Omega | \mathbb{R}^d)^\perp. \quad (4.11)$$

Testing (4.11) against $v = \Phi_0(f_2)$ and $v = \Phi_0(f_1)$ successively when $k = 1$ and $k = 2$ yields

$$(f_1, \Phi_0(f_2))_{L^2(\Omega)} = \mathcal{E}(\Phi_0(f_1), \Phi_0(f_2)) = \mathcal{E}(\Phi_0(f_2), \Phi_0(f_1)) = (f_2, \Phi_0(f_1))_{L^2(\Omega)}.$$

Therefore, the operator $R_\Omega \circ \Phi_0 : L^2(\Omega) \xrightarrow{\Phi_0} V_\nu(\Omega | \mathbb{R}^d)^\perp \xrightarrow{R_\Omega} L^2(\Omega)^\perp$ is compact (by [Theorem 3.10](#)) and symmetric hence self-adjoint. It is a fact from the spectral theory of compact self-adjoint operators that $L^2(\Omega)^\perp$ has an orthonormal basis $(e_n)_n$ whose elements are eigenfunctions of $R_\Omega \circ \Phi_0$ and the sequence of the corresponding eigenvalues are non-negative real numbers $(r_n)_n$ which we assume ordered in the decreasing order, $r_1 \geq r_2 \geq \dots \geq r_n \geq \dots \geq 0$ such that $r_n \rightarrow 0$ as $n \rightarrow \infty$. Precisely, for each $n \geq 1$, $R_\Omega \circ \Phi_0(e_n) = r_n e_n$ or simply write $\Phi_0(e_n) = r_n e_n$ a.e in Ω . Combining the latter relation with definition of $\Phi_0(e_n)$ we get

$$\mathcal{E}(\Phi_0(e_n), v) = \int_{\Omega} e_n(x)v(x)dx = r_n^{-1} \int_{\Omega} \Phi_0(e_n)(x)v(x)dx \quad \text{for all } v \in V_\nu(\Omega | \mathbb{R}^d)^\perp.$$

Equivalently, setting $\mu_n = r_n^{-1}$ and $\phi_n = \Phi_0(e_n) / \|\Phi_0(e_n)\|_{L^2(\Omega)} = r_n^{-1} \Phi_0(e_n)$ which is clearly an element of $V_\nu(\Omega | \mathbb{R}^d)^\perp$ yields

$$\mathcal{E}(\phi_n, v) = \mu_n \int_{\Omega} \phi_n(x)v(x)dx \quad \text{for all } v \in V_\nu(\Omega | \mathbb{R}^d)^\perp.$$

Hereby, along with $\mu_0 = 0$ and $\phi_0 = |\Omega|^{-1}$ provides the sequences sought for. Now if we assume $\mu_1 = 0$ then we have $\phi_1 \in V_\nu(\Omega | \mathbb{R}^d)^\perp$ and $\mathcal{E}(\phi_1, v) = 0$ for all $v \in V_\nu(\Omega | \mathbb{R}^d)^\perp$ in particular $\mathcal{E}(\phi_1, \phi_1) = 0$ i.e ϕ_1 is a constant function in $V_\nu(\Omega | \mathbb{R}^d)^\perp$ necessarily $\phi_1 = 0$ since u_1 has zero mean over Ω . We have therefore reached a contradiction as ϕ_1 is supposed to be an eigenfunction i.e $\phi_1 \neq 0$. Thus, $\mu_1 > 0$ and the proof is complete. \square

4.3. Robin boundary condition. In this section we treat a Robin-type problem with respect to the nonlocal operator L on Ω . In the classical setting for the Laplace operator, the Robin boundary problem – also known as Fourier boundary problem or third boundary problem – is a combination of the Dirichlet and Neumann boundary problem in the form²

$$-\Delta u = f \text{ in } \Omega \quad \text{and} \quad \frac{\partial u}{\partial n} + \beta u = g \text{ on } \partial\Omega. \quad (4.12)$$

Here $f \in L^2(\Omega)$ and the measurable functions $\beta, g : \partial\Omega \rightarrow \mathbb{R}$ are given. Analogously, in the nonlocal set up, we assume that $\beta, g : \Omega^c \rightarrow \mathbb{R}$ are measurable functions. The Robin problem consists in finding a measurable function $u : \mathbb{R}^d \rightarrow \mathbb{R}$ such that

$$Lu = f \text{ in } \Omega \quad \text{and} \quad \mathcal{N}u + \beta u = g \text{ on } \Omega^c. \quad (4.13)$$

²According to the over 20 years survey work [\[GA98\]](#), there is no historical evidence why the problem (4.12) is termed after Robin's name. The survey [\[GA98, p.69\]](#) also points out that the first mathematical appearance of the problem (4.12) goes back at least to the works on cooling law by Fourier(1822) and/or Newton (1701, but mathematical contribution by Newton is uncertain).

Note that, for $\beta = 0$ one recovers the inhomogeneous Neumann problem. Informally, for $\beta \rightarrow \infty$ it leads to the homogeneous Dirichlet problem. Define the quadratic form

$$Q_\beta(u, v) = \mathcal{E}(u, v) + \int_{\Omega^c} u(y)v(y)\beta(y)dy.$$

A function $u \in V_\nu(\Omega | \mathbb{R}^d)$ is called a weak solution of the Robin problem (4.13) if

$$Q_\beta(u, v) = \int_{\Omega} f(x)v(x)dx + \int_{\Omega^c} g(y)v(y)dy \text{ for all } v \in V_\nu(\Omega | \mathbb{R}^d). \quad (4.14)$$

Theorem 4.15. *Let ν and Ω be as in Theorem 4.14. Assume that $\beta\tilde{\nu}^{-1} : \Omega^c \rightarrow [0, \infty)$ is essentially bounded and β is non-trivial that is, $|\Omega^c \cap \{\beta > 0\}| > 0$. Let $f \in L^2(\Omega)$ and $g \in L^2(\Omega^c; \tilde{\nu}^{-1})$. There exists a unique function $u \in V_\nu(\Omega | \mathbb{R}^d)$ solution to (4.14) satisfying*

$$\|u\|_{V_\nu(\Omega | \mathbb{R}^d)} \leq C (\|f\|_{L^2(\Omega)} + \|g\|_{L^2(\Omega^c, \tilde{\nu}^{-1})}), \quad (4.15)$$

where $C := C(d, \Omega, \Lambda, \nu, \beta) > 0$ can be chosen independently of u, f and g .

Remark 4.16. The operator $\Psi : L^2(\Omega) \times L^2(\Omega^c, \tilde{\nu}^{-1}) \rightarrow V_\nu(\Omega | \mathbb{R}^d)$ mapping the data (f, g) to the unique solution $u \in V_\nu(\Omega | \mathbb{R}^d)$ of the variational problem (4.14) is linear, one-to-one, and continuous. Moreover, with C as above,

$$\|\Psi(f, g)\|_{V_\nu(\Omega | \mathbb{R}^d)} \leq C \|(f, g)\|_{L^2(\Omega) \times L^2(\Omega^c, \tilde{\nu}^{-1})}.$$

Proof. First of all, we claim that the form $Q_\beta(\cdot, \cdot)$ is coercive on $V_\nu(\Omega | \mathbb{R}^d)$. Assume it is not true. Then for each $n \geq 1$ there exists $u_n \in V_\nu(\Omega | \mathbb{R}^d)$ with $\|u_n\|_{V_\nu(\Omega | \mathbb{R}^d)} = 1$ such that

$$Q_\beta(u_n, u_n) < \frac{1}{2^n}.$$

In virtue of our compactness result, Theorem 3.10, $(u_n)_n$ converges up to a subsequence in $L^2(\Omega)$ to some u . We deduce $\|u\|_{L^2(\Omega)} = 1$, since $\mathcal{E}(u_n, u_n) \xrightarrow{n \rightarrow \infty} 0$ and for all $n \geq 1$, $\|u_n\|_{V_\nu(\Omega | \mathbb{R}^d)} = 1$. From $\mathcal{E}(u_n, u_n) \xrightarrow{n \rightarrow \infty} 0$ and $\|u_n - u\|_{L^2(\Omega)} \xrightarrow{n \rightarrow \infty} 0$ we obtain that u_n converges to u in $V_\nu(\Omega | \mathbb{R}^d)$ with $\mathcal{E}(u, u) = 0$. Thus u is constant almost everywhere in \mathbb{R}^d . On the other hand, since β is bounded and the embedding $V_\nu(\Omega | \mathbb{R}^d) \hookrightarrow L^2(\Omega^c, \tilde{\nu})$, see Lemma 2.16, is continuous, we have

$$\begin{aligned} \int_{\Omega^c} u^2(y)\beta(y)dy &\leq 2 \int_{\Omega^c} u_n^2(y)\beta(y)dy + 2\|\beta\tilde{\nu}^{-1}\|_{L^\infty(\Omega^c)} \int_{\Omega^c} (u_n(y) - u(y))^2\tilde{\nu}(y)dy \\ &\leq 2Q_\beta(u_n, u_n) + C\|u_n - u\|_{V_\nu(\Omega | \mathbb{R}^d)}^2 \xrightarrow{n \rightarrow \infty} 0. \end{aligned}$$

From this, we conclude $u = 0$ since we know that u is a constant function and $\beta > 0$ almost everywhere on a set of positive measure $U \subset \Omega^c$ on which u vanishes. This contradicts $\|u\|_{L^2(\Omega)} = 1$ and hence our initial assumption was wrong. Therefore there exists a constant $C = C(d, \Omega, \nu, \beta) > 0$ such that

$$Q_\beta(u, u) \geq C\|u\|_{V_\nu(\Omega | \mathbb{R}^d)}^2 \text{ for all } u \in V_\nu(\Omega | \mathbb{R}^d). \quad (4.16)$$

The remaining requirements for the application of the Lax-Milgram lemma can be checked easily. Existence of a unique solution to (4.14) follows. The estimate (4.15) is a direct consequence of (4.16). \square

4.4. Dirichlet-to-Neumann map. .

Let us first review the nonlocal Dirichlet problem. In the spirit of [FKV15] one can easily prove the following

Theorem 4.17. *Let $\Omega \subset \mathbb{R}^d$ be open and bounded. Given $f \in L^2(\Omega)$ and $g \in T_\nu(\Omega^c)$, there exists a unique function $u \in V_\nu(\Omega | \mathbb{R}^d)$ with $u = g$ a.e. on Ω^c and*

$$\mathcal{E}(u, v) = \int_{\Omega} f(x)v(x)dx \quad \text{for all } v \in V_{\nu,0}(\Omega | \mathbb{R}^d). \quad (4.17)$$

In fact, u is the weak solution to the nonlocal Dirichlet problem $Lu = f$ in Ω and $u = g$ on Ω^c . Moreover, there exists $C = C(\Omega, d, \Lambda, \nu) > 0$ independent of f and g ,

$$\|u\|_{V_\nu(\Omega | \mathbb{R}^d)} \leq C(\|f\|_{L^2(\Omega)} + \|g\|_{T_\nu(\Omega^c)}). \quad (4.18)$$

The result follows from the Lax-Milgram lemma because the linear form $v \mapsto \int_{\Omega} f v$ is continuous on $V_{\nu,0}(\Omega | \mathbb{R}^d)$ and the bilinear form $\mathcal{E}(\cdot, \cdot)$ bounded and coercive on $V_{\nu,0}(\Omega | \mathbb{R}^d)$ (see [Theorem 3.13](#)). It is noteworthy to recall that under the non-integrability condition [\(I\)](#) and the Lévy integrability condition [\(L\)](#), $V_{\nu,0}(\Omega | \mathbb{R}^d)$ is compactly embedded in $L^2(\Omega)$. With this at hand, analogously to [Theorem 4.14](#) there exist of a family $(\psi_n)_n$ elements of $V_{\nu,0}(\Omega | \mathbb{R}^d)$, orthonormal basis of $L^2(\Omega)$ and an increasing sequence of real number $0 < \lambda_1 \leq \dots \leq \lambda_n \leq \dots$ such that $\lambda_n \rightarrow \infty$ as $n \rightarrow \infty$ and each ψ_n is a Dirichlet eigenfunction of L whose corresponding eigenvalue is λ_n namely

$$\mathcal{E}(\psi_n, v) = \lambda_n \int_{\Omega} \psi_n(x)v(x)dx \quad \text{for all } v \in V_{\nu,0}(\Omega | \mathbb{R}^d).$$

Note that the constants $\mu_1 > 0$ and $\lambda_1 > 0$ respectively satisfy the Poincaré inequalities

$$\begin{aligned} \mathcal{E}(u, u) &\geq \mu_1 \|u\|_{L^2(\Omega)}^2, \quad \text{for all } u \in V_\nu(\Omega | \mathbb{R}^d)^\perp, \\ \mathcal{E}(u, u) &\geq \lambda_1 \|u\|_{L^2(\Omega)}^2, \quad \text{for all } u \in V_{\nu,0}(\Omega | \mathbb{R}^d). \end{aligned}$$

Before we formally define the Dirichlet-to-Neumann map, some prerequisites are required. Let $f \in L^2(\Omega)$ and $g \in T_\nu(\Omega^c)$. Assume, $\lambda < \lambda_1$, then the bilinear form $\mathcal{E}_{-\lambda}(u, u) = \mathcal{E}(u, u) - \lambda \|u\|_{L^2(\Omega)}^2$ is coercive on $V_{\nu,0}(\Omega | \mathbb{R}^d)$. Thus there exists a function $u \in V_\nu(\Omega | \mathbb{R}^d)$ unique weak solution to the Dirichlet problem $Lu - \lambda u = f$ in Ω and $u = g$ on Ω^c . Explicitly, $u = g$ on Ω^c and

$$\mathcal{E}(u, v) - \lambda \int_{\Omega} u(x)v(x)dx = \int_{\Omega} f(x)v(x)dx \quad \text{for all } v \in V_{\nu,0}(\Omega | \mathbb{R}^d). \quad (4.19)$$

Moreover, the estimate [\(4.18\)](#) (with the estimating constant depending on λ) remains true. More generally, by the mean of Fredholm alternative and the closed graph Theorem, the preceding facts [\(4.19\)](#) and [\(4.18\)](#) respectively remain true for the operator $L - \lambda$, whenever $\lambda \in \mathbb{R} \setminus \{\lambda_n : n \geq 1\}$.

From now on we suppose $f = 0$ and $\lambda \in \mathbb{R} \setminus \{\lambda_n : n \geq 1\}$ and label the solution of [\(4.19\)](#) by $u = u_g$. Then the mapping $g \mapsto u_g$ is linear and continuous from $T_\nu(\Omega^c)$ to $V_\nu(\Omega | \mathbb{R}^d)$ since by [\(4.18\)](#) we have

$$\|u_g\|_{V_\nu(\Omega | \mathbb{R}^d)} \leq C \|g\|_{T_\nu(\Omega^c)}.$$

Given $v \in T_\nu(\Omega^c)$, put $\tilde{v} = \text{ext}(v) \in V_\nu(\Omega | \mathbb{R}^d)$ be an extension of v . Let $\langle \cdot, \cdot \rangle$ be the dual pairing between $T_\nu(\Omega^c)$ and $T_\nu(\Omega^c)'$.

Definition 4.18. Let $\lambda \in \mathbb{R} \setminus \{\lambda_n : n \geq 1\}$. We call the mapping $\mathcal{D}_\lambda : T_\nu(\Omega^c) \rightarrow T_\nu(\Omega^c)'$ with $g \mapsto \mathcal{D}_\lambda g = \mathcal{E}_{-\lambda}(u_g, \tilde{\cdot})$ such that $\langle \mathcal{D}_\lambda g, v \rangle = \mathcal{E}_{-\lambda}(u_g, \tilde{v})$, the Dirichlet-to-Neumann map with respect to the operator $L - \lambda$.

Theorem 4.19. *The Dirichlet-to-Neumann operator $\mathcal{D}_\lambda : T_\nu(\Omega^c) \rightarrow T_\nu(\Omega^c)'$ with $g \mapsto \mathcal{D}_\lambda g = \mathcal{E}_{-\lambda}(u_g, \tilde{\cdot})$ is well defined, linearly bounded and self-adjoint. Moreover there exists $c \in \mathbb{R}$ such that for all $g \in T_\nu(\Omega^c)$*

$$\langle \mathcal{D}_\lambda g, g \rangle \geq c \|u_g\|_{V_\nu(\Omega|\mathbb{R}^d)}^2.$$

Proof. Consider $v' \in V_\nu(\Omega|\mathbb{R}^d)$ another extension of v then $v' - \tilde{v} \in V_{\nu,0}(\Omega|\mathbb{R}^d)$ and by definition of u_g we have

$$\mathcal{E}_{-\lambda}(u_g, v' - \tilde{v}) = 0 \quad \text{that is} \quad \mathcal{E}_{-\lambda}(u_g, \tilde{v}) = \mathcal{E}_{-\lambda}(u_g, v').$$

Therefore the mapping $v \mapsto \mathcal{E}_{-\lambda}(u_g, \tilde{v})$ is well defined, linear and bounded on $T_\nu(\Omega^c)$. Indeed,

$$|\mathcal{E}_{-\lambda}(u_g, \tilde{v})| \leq (|\lambda| + 1) \|u_g\|_{V_\nu(\Omega|\mathbb{R}^d)} \|\tilde{v}\|_{V_\nu(\Omega|\mathbb{R}^d)}.$$

Since the extension \tilde{v} of v is arbitrarily chosen, upon the estimate (4.19) we obtain

$$|\mathcal{E}_{-\lambda}(u_g, \tilde{v})| \leq C \|g\|_{T_\nu(\Omega^c)} \|v\|_{T_\nu(\Omega^c)}.$$

This shows that, $\mathcal{E}_{-\lambda}(u_g, \tilde{\cdot})$ belongs $T_\nu(\Omega^c)'$. Subsequently it also follows this estimate that the mapping $\mathcal{D}_\lambda : T_\nu(\Omega^c) \rightarrow T_\nu(\Omega^c)'$ with $g \mapsto \mathcal{D}_\lambda g = \mathcal{E}_{-\lambda}(u_g, \tilde{\cdot})$ is linearly bounded. Now let $g, h \in T_\nu(\Omega^c)$ specializing the definition of \mathcal{D}_λ with $\tilde{g} = u_g$ and $\tilde{h} = u_h$ the self-adjointness is obtained as follows

$$\langle \mathcal{D}_\lambda g, h \rangle = \mathcal{E}_{-\lambda}(u_g, u_h) = \mathcal{E}_{-\lambda}(u_h, u_g) = \langle \mathcal{D}_\lambda h, g \rangle.$$

The choice $c = \min(1, -\lambda)$ leads to $\langle \mathcal{D}_\lambda g, g \rangle = \mathcal{E}_{-\lambda}(u_g, u_g) \geq c \|u_g\|_{V_\nu(\Omega|\mathbb{R}^d)}^2$. □

Remark 4.20. The above definition is motivated by the following observation. Assume u_g is as before and $\varphi \in C_c^\infty(\mathbb{R}^d)$. The Gauss-Green formula (A.5) gives

$$\langle \mathcal{D}_\lambda g, \varphi \rangle = \mathcal{E}_{-\lambda}(u_g, \varphi) = \int_{\Omega^c} \mathcal{N}u_g(y) \varphi(y) dy. \quad (4.20)$$

From the second equality we can identify $\mathcal{D}_\lambda g = \mathcal{N}u_g \in L^2(\Omega^c, \tilde{\nu}^{-1}) \subset T_\nu(\Omega^c)'$. Hence $\mathcal{D}_\lambda : g \mapsto \mathcal{N}u_g$, which agrees with conceptual idea behind the Dirichlet-to-Neumann map in the classical case.

Theorem 4.21. *Let the assumptions of Theorem 4.15 be in force. Denote by L_β the operator L subject to the Robin boundary condition $\mathcal{N}u + \beta u = 0$. Then the point spectrum $\sigma_p(L_\beta) = (\gamma_n(\beta))_n$ of L_β is infinitely countable say $0 < \gamma_1(\beta) \leq \gamma_2(\beta) \leq \dots \leq \gamma_n(\beta) \leq \dots$ and the corresponding eigenfunctions belong to $V_\nu(\Omega|\mathbb{R}^d)$ and form an orthonormal basis of $L^2(\Omega)$.*

Proof. It suffices to proceed as the in proof of Theorem 4.14. □

Next, we see the relation between the spectrum of the operator L subject to Robin boundary condition and that of Dirichlet-to-Neumann operator.

Theorem 4.22. *Let $\lambda \in \mathbb{R} \setminus \{\lambda_n : n \geq 1\}$ and $\beta : \Omega^c \rightarrow \mathbb{R}$ be measurable. Consider the Dirichlet-to-Neumann map $\mathcal{D}_\lambda : T_\nu(\Omega^c) \rightarrow T_\nu(\Omega^c)'$, $\mathcal{D}_\lambda g = \mathcal{N}u_g$. Then, $0 \in \sigma_p(\mathcal{D}_\lambda + \beta)$ if and only if $\lambda \in \sigma_p(L_\beta)$. In addition, $\dim \ker(L_\beta - \lambda) = \dim \ker(\mathcal{D}_\lambda + \beta)$.*

Proof. Let $u \in \ker(L_\beta - \lambda)$ then for all $v \in V_\nu(\Omega | \mathbb{R}^d)$,

$$Q_\beta(u, v) = \lambda \int_\Omega u(x)v(x)dx \quad \text{equivalently} \quad \mathcal{E}_{-\lambda}(u, v) = - \int_{\Omega^c} u(y)v(y)\beta(y)dy.$$

Set $g = \text{Tr}(u) = u|_{\Omega^c}$, with the aid of (4.20) the above relation reduces to

$$\int_{\Omega^c} \mathcal{N}u_g(y)v(y)dy = - \int_{\Omega^c} g(y)v(y)\beta(y)dy.$$

Thus $g \in \ker(\mathcal{D}_\lambda + \beta)$. We have shown that the mapping $T : \ker(L_\beta - \lambda) \rightarrow \ker(\mathcal{D}_\lambda + \beta)$ with $u \mapsto \text{Tr}(u)$ is well defined and onto. Both assertions will follow once we show that T defines a bijection in other words we only have to show that T is one-to-one. For $u \in \ker(L_\beta - \lambda)$ if $\text{Tr}(u) = 0$ then from the first relation above, we have $\mathcal{E}(u, v) = \lambda \int_\Omega u(x)v(x)dx$ for all $v \in V_{\nu,0}(\Omega | \mathbb{R}^d)$. Necessarily, $u = 0$ otherwise λ is a Dirichlet eigenvalue which is not the case by assumption. \square

5. TRANSITION FROM NONLOCAL TO LOCAL

The main purpose of this section is to prove the convergence of a sequence of nonlocal Neumann problems to a local Neumann problem, i.e., the corresponding solutions converge. The main result of this section is [Theorem 5.4](#). We consider the following set-up: Let $(\nu_\alpha)_{\alpha \in (0,2)}$ be a family of Lévy radial functions approximating the Dirac measure at the origin, i.e., for every $\alpha, \delta > 0$

$$\nu_\alpha \geq 0 \text{ is radial, } \int_{\mathbb{R}^d} (1 \wedge |h|^2)\nu_\alpha(h)dh = \frac{1}{d}, \quad \lim_{\alpha \rightarrow 2} \int_{|h|>\delta} \nu_\alpha(h)dh = 0. \quad (5.1)$$

Note that there is no restriction on the support of ν_α . The above definition of $(\nu_\alpha)_{0 < \alpha < 2}$ generalizes the spectrum of possible approximative sequences in [\[FKV20,DTZ22\]](#). Note that, convergence of nonlocal variational structures including finite dimensional Galerkin methods have already been considered in [\[MD15\]](#) and [\[BMCP15\]](#) for homogeneous nonlocal problems of vanishing horizon-type.

We denote L_α and \mathcal{N}_α be the nonlocal operators associated with ν_α , i.e.,

$$L_\alpha u(x) = 2 \text{ p.v. } \int_{\mathbb{R}^d} (u(x) - u(y))\nu_\alpha(x - y) dy,$$

$$\mathcal{N}_\alpha u(x) = 2 \int_\Omega (u(x) - u(y))\nu_\alpha(x - y) dy.$$

The associated energy forms are defined by

$$\mathcal{E}_\Omega^\alpha(u, v) = \iint_{\Omega\Omega} (u(y) - u(x))(v(y) - v(x))\nu_\alpha(x - y)dx dy,$$

$$\mathcal{E}^\alpha(u, v) = \iint_{(\Omega^c \times \Omega^c)^c} (u(y) - u(x))(v(y) - v(x))\nu_\alpha(x - y)dx dy.$$

Let us mention two prototypical examples of interest here. For more concrete examples we refer the reader to [FKV20, FG20]

Example 5.1. Define $\nu_\alpha(h) = a_{d,\alpha}|h|^{-d-\alpha}$ with $a_{d,\alpha} = \frac{\alpha(2-\alpha)}{2d|\mathbb{S}^{d-1}|}$. Indeed, passing through polar coordinates yields

$$d \int_{\mathbb{R}^d} (1 \wedge |h|^2)|h|^{-d-\alpha} dh = d|\mathbb{S}^{d-1}| \left(\int_0^1 r^{1-\alpha} dr + \int_1^\infty r^{-1-\alpha} dr \right) = \frac{2d|\mathbb{S}^{d-1}|}{\alpha(2-\alpha)} = a_{\alpha,d}^{-1}.$$

For $\delta > 0$, a similar computation gives

$$a_{d,\alpha} \int_{|h| \geq \delta} (1 \wedge |h|^2)|h|^{-d-\alpha} dh \leq \frac{\alpha(2-\alpha)}{2d} \int_\delta^\infty r^{-1-\alpha} dr = \frac{(2-\alpha)\delta^{-\alpha}}{2d} \xrightarrow{\alpha \rightarrow 2} 0.$$

The choice of $\nu_\alpha(h) = a_{d,\alpha}|h|^{-d-\alpha}$ gives rise to a multiple of fractional Laplace operator, i.e. $L_\alpha = \frac{a_{d,\alpha}}{C_{d,\alpha}}(-\Delta)^{\alpha/2}$, where we recall that $C_{d,\alpha}$ is the normalizing constant of $(-\Delta)^{\alpha/2}$. Note however, that $\frac{a_{d,\alpha}}{C_{d,\alpha}} \rightarrow 1$ as $\alpha \rightarrow 2$ see [NPV12, FG20].

Example 5.2. Let $\nu \in L^1(\mathbb{R}^d, 1 \wedge |h|^2)$ be any radial Lévy density that is normalized, i.e.,

$$\int_{\mathbb{R}^d} 1 \wedge |h|^2 \nu(h) dh = \frac{1}{d}.$$

Let a family $(\nu_\alpha)_{\alpha \in (0,2)}$ be defined by $\nu_\alpha = \nu^{2-\alpha}$ where ν^ε is a rescaled version of ν in the following sense:

$$\nu^\varepsilon(h) = \begin{cases} \varepsilon^{-d-2}\nu(h/\varepsilon) & \text{if } |h| \leq \varepsilon \\ \varepsilon^{-d}|h|^{-2}\nu(h/\varepsilon) & \text{if } \varepsilon < |h| \leq 1 \\ \varepsilon^{-d}\nu(h/\varepsilon) & \text{if } |h| > 1. \end{cases}$$

Then, as shown in [Fog21b, Proposition 2.2], $(\nu_\alpha)_{\alpha \in (0,2)}$ satisfies (5.1). Note that, as a possible simple example, one could consider $\nu(h) = c\mathbb{1}_{B_1(0)}(h)$, so that (ν_α) would correspond to what is known as vanishing horizon in peridynamics, see [DY21, DTZ22].

Lemma 5.3. Assume $\Omega \subset \mathbb{R}^d$ is an open bounded set with Lipschitz boundary. Let $\varphi \in C_b^2(\mathbb{R}^d)$ and $v \in V_{\nu_\alpha}(\Omega | \mathbb{R}^d)$. The following assertions hold true.

(i) There is a constant $C > 0$ independent of α such that

$$\sup_{\alpha \in (0,2)} \left| \int_{\Omega^c} \mathcal{N}_\alpha \varphi(y)v(y) dy \right| \leq C \|\varphi\|_{C_b^2(\mathbb{R}^d)} \|v\|_{V_{\nu_\alpha}(\Omega | \mathbb{R}^d)}.$$

(ii) Assume $v \in H^1(\mathbb{R}^d)$ then

$$\lim_{\alpha \rightarrow 2} \int_{\Omega^c} \mathcal{N}_\alpha \varphi(y)v(y) dy = \int_{\partial\Omega} \frac{\partial\varphi}{\partial n}(x)v(x) d\sigma(x).$$

Proof. In view of the estimates (A.1) and (A.4) respectively, we have

$$|L_\alpha \varphi| \leq \frac{4}{d} \|\varphi\|_{C_b^2(\mathbb{R}^d)} \quad \text{and} \quad \mathcal{E}^\alpha(\varphi, \varphi) \leq \frac{4}{d} \|\varphi\|_{C_b^2(\mathbb{R}^d)} \quad \text{for all } \alpha \in (0, 2).$$

By the continuity of the linear mapping $v \mapsto \mathcal{E}^\alpha(\varphi, v) - \int_\Omega L_\alpha \varphi(x)v(x)dx$, the Gauss-Green formula (A.5) is applicable for $\varphi \in C_b^2(\mathbb{R}^d)$ and $v \in V_{\nu_\alpha}(\Omega | \mathbb{R}^d)$. Therefore, with the help of the above estimates we get (i) as follows

$$\begin{aligned} \left| \int_{\Omega^c} \mathcal{N}_\alpha \varphi(y)v(y)dy \right| &= \left| \mathcal{E}^\alpha(\varphi, v) - \int_\Omega L_\alpha \varphi(x)v(x)dx \right| \\ &\leq \mathcal{E}^\alpha(\varphi, \varphi)^{1/2} \mathcal{E}^\alpha(v, v)^{1/2} + \|L_\alpha \varphi\|_{L^2(\Omega)} \|v\|_{L^2(\Omega)} \\ &\leq C \|\varphi\|_{C_b^2(\mathbb{R}^d)} \|v\|_{V_{\nu_\alpha}(\Omega | \mathbb{R}^d)}. \end{aligned}$$

Noting that $L_\alpha \varphi(x) \xrightarrow{\alpha \rightarrow 2} -\Delta \varphi(x)$ for all $x \in \mathbb{R}^d$ (see [Fog21b, Proposition 2.4]) and that $|L_\alpha \varphi| \leq \frac{4}{d} \|\varphi\|_{C_b^2(\mathbb{R}^d)}$, the Lebesgue dominated convergence Theorem yields

$$\int_\Omega L_\alpha \varphi(x)v(x)dx \xrightarrow{\alpha \rightarrow 2} \int_\Omega -\Delta \varphi(x)v(x)dx.$$

On the other hand, according to [Fog21b] and [FKV20, Theorem 3.4], we have that

$$\begin{aligned} \iint_{\Omega\Omega} (v(x) - v(y))^2 \nu_\alpha(x - y) dx dy &\xrightarrow{\alpha \rightarrow 2} \int_\Omega |\nabla v(x)|^2 dx \\ \iint_{\Omega\Omega^c} (v(x) - v(y))^2 \nu_\alpha(x - y) dx dy &\xrightarrow{\alpha \rightarrow 2} 0. \end{aligned} \tag{5.2}$$

So that, $\mathcal{E}^\alpha(v, v) \xrightarrow{\alpha \rightarrow 2} \int_\Omega |\nabla v(x)|^2 dx$. Thus we also have

$$\mathcal{E}^\alpha(\varphi, v) \xrightarrow{\alpha \rightarrow 2} \int_\Omega \nabla \varphi(x) \cdot \nabla v(x) dx.$$

Finally from the foregoing and the local Gauss-Green formula we obtain (ii) as follows

$$\begin{aligned} \lim_{\alpha \rightarrow 2} \int_{\Omega^c} \mathcal{N}_\alpha \varphi(y)v(y)dy &= \lim_{\alpha \rightarrow 2} \mathcal{E}^\alpha(\varphi, v) - \lim_{\alpha \rightarrow 2} \int_\Omega L_\alpha \varphi(x)v(x)dx \\ &= \int_\Omega \nabla \varphi(x) \cdot \nabla v(x) dx - \int_\Omega \Delta \varphi(x)v(x) dx \\ &= \int_{\partial\Omega} \frac{\partial \varphi}{\partial n}(x)v(x) d\sigma(x). \end{aligned}$$

□

Theorem 5.4 (Convergence of weak solution). *Let $\Omega \subset \mathbb{R}^d$ be an open bounded and connected with Lipschitz boundary. Let $(f_\alpha)_\alpha$ be functions converging in the weak sense to another function f in $L^2(\Omega)$ and let $g_\alpha = \mathcal{N}_\alpha \varphi$ and $g = \frac{\partial \varphi}{\partial n}$ for some $\varphi \in C_b^2(\mathbb{R}^d)$. Assume $u_\alpha \in V_{\nu_\alpha}(\Omega | \mathbb{R}^d)^\perp$ is a weak solution to $L_\alpha u = f_\alpha$ on Ω and $\mathcal{N}_\alpha u = g_\alpha$ on Ω^c that is,*

$$\mathcal{E}^\alpha(u_\alpha, v) = \int_\Omega f_\alpha(x)v(x) + \int_{\Omega^c} g_\alpha(x)v(x) \quad \text{for all } v \in V_{\nu_\alpha}(\Omega | \mathbb{R}^d)^\perp.$$

Let $u \in H^1(\Omega)^\perp$ be the unique weak solution in to the Neumann problem $-\Delta u = f$ in Ω and $\frac{\partial u}{\partial n} = g$ on $\partial\Omega$ i.e.

$$\int_\Omega \nabla u(x) \cdot \nabla v(x) dx = \int_\Omega f(x)v(x) dx + \int_{\partial\Omega} g(x)v(x) d\sigma(x) \quad \text{for all } u \in H^1(\Omega)^\perp.$$

Then $(u_\alpha)_\alpha$ strongly converges to u in $L^2(\Omega)$, i.e., $\|u_\alpha - u\|_{L^2(\Omega)} \xrightarrow{\alpha \rightarrow 2} 0$. Moreover, the following weak convergence of the energy forms holds true

$$\mathcal{E}^\alpha(u_\alpha, v) \xrightarrow{\alpha \rightarrow 2} \int_\Omega \nabla u(x) \cdot \nabla v(x) dx \quad \text{for all } v \in H^1(\mathbb{R}^d). \quad (5.3)$$

Remark 5.5.

- (i) In case of the homogeneous problem, i.e., for $\varphi = 0$ and $f_\alpha = f$, the corresponding result is a direct consequence of the Mosco-convergence of $(\mathcal{E}^\alpha(\cdot, \cdot), V_{\nu_\alpha}(\Omega | \mathbb{R}^d))_\alpha$ to the gradient form $\int_\Omega |\nabla u(x)|^2 dx$ with domain $H^1(\Omega)$, see [FKV20].
- (ii) The convergence in result of Theorem 5.4 remains true if one replaces the Neumann condition with the Dirichlet condition, see [FG20].
- (iii) Examples of the type of Example 5.2 have been considered in relation to models in peridynamics, see [DTZ22, Section 4.2] and [BMCP15] for a natural nonlinear setting.
- (iv) The assertion of the theorem remains true under the weaker assumption that $(g_\alpha, \psi)_{L^2(\Omega^c)}$ converges to $(g, \psi)_{L^2(\partial\Omega)}$ for all $\psi \in H^1(\mathbb{R}^d)$.
- (v) It is desirable to study Theorem 5.4 under more general assumptions, e.g., under a weaker assumption than $\varphi \in C_b^2(\mathbb{R}^d)$. A sufficient condition to be expected is $g \in H^{1/2}(\partial\Omega)$.

Proof. A compactness argument as in [Pon04, Corollary 2.1], see [FG20, Chapter 5], shows that for certain $\alpha_0 \in (0, 2)$ there exists a constant positive $C > 0$ depending only on α_0, Ω and d such that for all $v \in L^2(\Omega)^\perp$ and all $\alpha \in (\alpha_0, 2)$

$$\|v\|_{V_{\nu_\alpha}(\Omega | \mathbb{R}^d)}^2 \leq C \mathcal{E}^\alpha(v, v). \quad (5.4)$$

In view of the weak convergence, we can assume without lost generality that $\sup_{\alpha \in (0, 2)} \|f_\alpha\|_{L^2(\Omega)} < \infty$. This together with the definition of u_α along with Lemma 5.3 (i) yields

$$\begin{aligned} \mathcal{E}^\alpha(u_\alpha, u_\alpha) &= \int_\Omega f_\alpha(x) u_\alpha(x) dx + \int_{\Omega^c} g_\alpha(y) u_\alpha(y) dy \\ &\leq \|u_\alpha\|_{V_{\nu_\alpha}(\Omega | \mathbb{R}^d)} (\|f_\alpha\|_{L^2(\Omega)} + \|\varphi\|_{C_b^2(\mathbb{R}^d)}) \\ &\leq C \|u_\alpha\|_{V_{\nu_\alpha}(\Omega | \mathbb{R}^d)}. \end{aligned}$$

Combining this with (5.4), then for a generic constant $C > 0$ independent of α we have the following uniform boundedness

$$\|u_\alpha\|_{H_{\nu_\alpha}(\Omega)} \leq \|u_\alpha\|_{V_{\nu_\alpha}(\Omega | \mathbb{R}^d)} \leq C \quad \text{for all } \alpha \in (\alpha_0, 2). \quad (5.5)$$

Recall that, see [Fog21b, FG20], $\|u\|_{H_{\nu_\alpha}(\Omega)} \xrightarrow{\alpha \rightarrow 2} \|u\|_{H^1(\Omega)}$ for all $u \in H^1(\Omega)$. Whence from [KS03, Lemma 2.2] there exists $u' \in H^1(\Omega)$ and a subsequence $\alpha_n \xrightarrow{n \rightarrow \infty} 2$ such that,

$$\lim_{n \rightarrow \infty} (u_{\alpha_n}, v)_{H_{\nu_{\alpha_n}}(\Omega)} = (u', v)_{H^1(\Omega)}.$$

Where, we recall that

$$\begin{aligned} (w, v)_{H_{\nu_\alpha}(\Omega)} &= \int_\Omega w(x) v(x) dx + \iint_{\Omega\Omega} (w(x) - w(y))(v(x) - w(y)) \nu_\alpha(x - y) dx dy \\ (w, v)_{H^1(\Omega)} &= \int_\Omega w(x) v(x) dx + \int_\Omega \nabla w(x) \cdot \nabla v(x) dx. \end{aligned}$$

In virtue of the asymptotic compactness, see [BBM01, FG20, Pon04] there exists a further subsequence that we still denote by $(\alpha_n)_n$ and a function $u'' \in H^1(\Omega)$ such that $\|u_{\alpha_n} - u''\|_{L^2(\Omega)} \xrightarrow{n \rightarrow \infty} 0$. It is not difficult to show that $u' = u''$ almost everywhere in Ω , $u \in H^1(\Omega)^\perp$ where we let $u = u'$, and that for all $v \in H^1(\Omega)$

$$\iint_{\Omega\Omega} (u_{\alpha_n}(x) - u_{\alpha_n}(y))(v(x) - v(y))\nu_{\alpha_n}(x - y)dx dy \xrightarrow{n \rightarrow \infty} \int_{\Omega} \nabla u(x) \cdot \nabla v(x)dx. \quad (5.6)$$

It remains to show that u is the weak solution of the corresponding local Neumann problem. To this end, we fix $v \in H^1(\Omega)^\perp$, given that Ω has a Lipschitz boundary we let $\bar{v} \in H^1(\mathbb{R}^d)$ be an extension of v . The uniform boundedness in (5.5) and the convergence in (5.2) yield

$$\begin{aligned} \iint_{\Omega\Omega^c} |(u_{\alpha_n}(x) - u_{\alpha_n}(y))(\bar{v}(x) - \bar{v}(y))|\nu_{\alpha_n}(x - y)dx dy \\ \leq C \iint_{\Omega\Omega^c} (\bar{v}(x) - \bar{v}(y))^2 \nu_{\alpha_n}(x - y)dx dy \xrightarrow{n \rightarrow \infty} 0. \end{aligned}$$

This combined with (5.6) gives

$$\mathcal{E}^{\alpha_n}(u_{\alpha_n}, \bar{v}) \xrightarrow{n \rightarrow \infty} \int_{\Omega} \nabla u(x) \cdot \nabla v(x)dx.$$

In particular, since $\bar{v} \in H^1(\mathbb{R}^d)$ can be arbitrarily chosen, we have the weak convergence

$$\mathcal{E}^{\alpha_n}(u_{\alpha_n}, v) \xrightarrow{n \rightarrow \infty} \int_{\Omega} \nabla u(x) \cdot \nabla v(x)dx \quad \text{for all } v \in H^1(\mathbb{R}^d).$$

We know that $\bar{v} \in V_{\nu_\alpha}(\Omega | \mathbb{R}^d)^\perp$ for all $\alpha \in (0, 2)$, thus by definition of u_{α_n} it follows that,

$$\mathcal{E}^{\alpha_n}(u_{\alpha_n}, \bar{v}) = \int_{\Omega} f_{\alpha_n}(x)v(x)dx + \int_{\Omega^c} g_{\alpha_n}(y)\bar{v}(y)dy.$$

By Lemma 5.3 (ii) and the fact that $f_{\alpha_n} \rightharpoonup f$ weakly in $L^2(\Omega)$, letting $n \rightarrow \infty$ we obtain

$$\int_{\Omega} \nabla u(x) \cdot \nabla v(x)dx = \int_{\Omega} f(x)v(x)dx + \int_{\partial\Omega} g(x)v(x)d\sigma(x).$$

In virtue of the uniqueness of the limit $u \in H^1(\Omega)^\perp$, the same reasoning can be applied to any other subsequence $(\alpha_n)_n$ with $\alpha_n \xrightarrow{n \rightarrow \infty} 2$ and hence the claimed convergences holds true for the whole sequence as desired. \square

APPENDIX A.

In this appendix we explain basic properties of translation-invariant nonlocal operators L driven by the density of a Lévy measure $\nu : \mathbb{R}^d \setminus \{0\} \rightarrow [0, \infty)$ satisfying condition (L). Throughout this section we assume $k(x, y) = \nu(x - y)$ for all $x \neq y$. The main goals include a definition of Lu as a distribution in Proposition A.2 and the Gauss-Green formula for nonlocal operators in Proposition A.5.

A.1. Basics on the operator L . Given $k \in \mathbb{N}$, denote $C_b^k(\mathbb{R}^d)$ the space of bounded functions of class C^k whose derivatives up to order k are bounded. Recall that for a sufficiently smooth function $v : \mathbb{R}^d \rightarrow \mathbb{R}$, the operator L defined by

$$Lv(x) = \text{p.v.} \int_{\mathbb{R}^d} (v(x) - v(y))\nu(x-y)dy = \lim_{\varepsilon \rightarrow 0^+} L_\varepsilon v(x)$$

where

$$L_\varepsilon v(x) = \int_{\mathbb{R}^d \setminus B_\varepsilon(x)} (v(x) - v(y))\nu(x-y)dy \quad (x \in \mathbb{R}^d; \varepsilon > 0).$$

Here are some basic properties of the operator L .

Proposition A.1. *Let $u \in C_b^2(\mathbb{R}^d)$. Then the following properties are satisfied.*

(i) *The map $x \mapsto Lu(x)$ is bounded and uniformly continuous. Moreover,*

$$Lu(x) = -\frac{1}{2} \int_{\mathbb{R}^d} (u(x+h) + u(x-h) - 2u(x))\nu(h) dh.$$

(ii) *For each $\varepsilon > 0$, the map $x \mapsto L_\varepsilon u(x)$ is uniformly continuous.*

(iii) *The family $(L_\varepsilon u(x))_\varepsilon$ is uniformly bounded and uniformly converges to Lu , i.e.*

$$\|L_\varepsilon u - Lu\|_{L^\infty(\mathbb{R}^d)} \xrightarrow{\varepsilon \rightarrow 0} 0.$$

Proof. Let $u \in C_b^2(\mathbb{R}^d)$. A simple change of variables implies

$$L_\varepsilon u(x) = -\frac{1}{2} \int_{\mathbb{R}^d \setminus B_\varepsilon(0)} (u(x+h) + u(x-h) - 2u(x))\nu(h) dh.$$

An application of the fundamental theorem of calculus yields

$$\begin{aligned} (u(x+h) + u(x-h) - 2u(x)) &= \int_0^1 [\nabla u(x+th) - \nabla u(x-th)] \cdot h dt \\ &= \int_0^1 \int_0^1 2t[D^2u(x-th+2sth) \cdot h] \cdot h ds dt. \end{aligned}$$

Since u and its Hessian D^2u are bounded functions, we deduce

$$|u(x+h) + u(x-h) - 2u(x)| \leq 2\|u\|_{C_b^2(\mathbb{R}^d)}(1 \wedge |h|^2), \quad x, h \in \mathbb{R}^d. \quad (\text{A.1})$$

The integrability of the function $h \mapsto (1 \wedge |h|^2)\nu(h)$ entails the boundedness of $x \mapsto Lu(x)$ and the uniform boundedness of $x \mapsto L_\varepsilon u(x)$. It also allows us to get rid of the principal value formulation. Furthermore, we can prove the uniform convergence of $(L_\varepsilon u)_\varepsilon$ to Lu by

$$\|L_\varepsilon u - Lu\|_{L^\infty(\mathbb{R}^d)} \leq 2\|u\|_{C_b^2(\mathbb{R}^d)} \int_{B_\varepsilon(0)} (1 \wedge |h|^2)\nu(h)dh \xrightarrow{\varepsilon \rightarrow 0} 0.$$

In order to prove the uniform continuity, we fix $x, z \in \mathbb{R}^d$ close enough, say $|x-z| \leq \delta$ with $0 < \delta < 1$. Then for every $h \in \mathbb{R}^d$, $h \neq 0$,

$$2|u(x) - u(z)| + |u(x+h) - u(z+h)| + |u(x-h) - u(z-h)| \leq 4\delta\|u\|_{C_b^2(\mathbb{R}^d)}.$$

This combined with (A.1) yields the uniform continuity via the integrability of $h \mapsto (1 \wedge |h|^2)\nu(h)$ as follows,

$$\|Lu(x) - Lu(z)\|_{L^\infty(\mathbb{R}^d)} \leq 2\|u\|_{C_b^2(\mathbb{R}^d)} \int_{\mathbb{R}^d} (\delta \wedge |h|^2)\nu(h)dh \xrightarrow{\delta \rightarrow 0} 0.$$

The uniform continuity of $x \mapsto L_\varepsilon u(x)$ follows analogously. \square

In order for $Lu(x)$ to be defined, u needs to possess two properties: some regularity in the neighborhood of the point x and some weighted integrability for $|x| \rightarrow \infty$. As shown above, being C^2 in the neighborhood of x is more than sufficient as is boundedness for $|x| \rightarrow \infty$. Let us investigate some mild condition on u as $|x| \rightarrow \infty$ that still allows a suitable definition of Lu . In order to do so, we additionally assume that ν is unimodal.

Proposition A.2. *Let ν be a unimodal Lévy measure. Define a weight $\widehat{\nu}$ on \mathbb{R}^d by $\widehat{\nu}(x) = \nu(\frac{1}{2}(1 + |x|))$.*

- (i) *For $u \in C^2(\mathbb{R}^d) \cap L^1(\mathbb{R}^d; \widehat{\nu})$, the expression $Lu(x)$ exists for every $x \in \mathbb{R}^d$.*
- (ii) *Assume that ν has full support. For $u \in L^1(\mathbb{R}^d; \widehat{\nu})$ the expression Lu is defined in the distributional sense via the mapping $\varphi \mapsto \langle Lu, \varphi \rangle = (u, L\varphi)_{L^2(\mathbb{R}^d)}$.*
- (iii) *Assume that ν satisfies the scaling condition (2.5). Let $\Omega \subset \mathbb{R}^d$ be open and bounded and $u \in V_\nu(\Omega | \mathbb{R}^d)$. Then Lu is defined in the distributional sense.*

Remark A.3. Note that $\widehat{\nu} \in L^1(\mathbb{R}^d) \cap L^\infty(\mathbb{R}^d)$ and that $L^1(\mathbb{R}^d; \widehat{\nu})$ contains $L^\infty(\mathbb{R}^d)$.

Example A.4. If $\nu(h) = |h|^{-d-\alpha}$ for some $\alpha \in (0, 2)$, then $\widehat{\nu}(h) \asymp (1 + |h|)^{-d-\alpha}$.

Proof. For the proof of (i) we decompose the integral in the definition of $Lu(x)$ into the two domains $\{|y| \leq 2|x| + 1\}$ and $\{|y| > 2|x| + 1\}$. In the first domain we employ the Taylor formula as in the proof of Proposition A.1. For y in the second domain we observe

$$|x - y| \geq |y| - |x| \geq \frac{|y|}{2} + \frac{|y|}{2} - |x| \geq \frac{|y| + 1}{2}.$$

Thus, for y from the second domain, by property Definition 2.4 we conclude $\nu(x-y) \leq c\widehat{\nu}(y)$ and thus

$$\int_{\{|y| > 2|x| + 1\}} |u(x)|\nu(x-y)dy + \int_{\{|y| > 2|x| + 1\}} |u(y)|\nu(x-y)dy \leq K_\nu|u(x)| + \|u\|_{L^1(\mathbb{R}^d; \widehat{\nu})}$$

For the proof of (ii), let $\varphi \in C_c^\infty(\mathbb{R}^d)$ be supported in $B_R(0)$ for some $R \geq 1$. We claim

$$|L\varphi(x)| \leq C\|\varphi\|_{C_b^2(\mathbb{R}^d)}\widehat{\nu}(x) \quad \text{for all } x \in \mathbb{R}^d. \quad (\text{A.2})$$

with some constant $C = C(R, d, \nu)$ depending only on R, d and ν . Indeed, suppose $|x| \geq 4R$, so that $\varphi(x) = 0$. Since $|x-y| \geq \frac{|x|}{2} + R \geq \frac{1}{2}(1+|x|)$ for $y \in B_R(0)$, the property Definition 2.4 implies $\nu(x-y) \leq c\widehat{\nu}(x)$. Accordingly,

$$|L\varphi(x)| \leq \int_{B_R(0)} |\varphi(y)|\nu(x-y)dy \leq c|B_R(0)|\|\varphi\|_{C^2(\mathbb{R}^d)}\widehat{\nu}(x).$$

Whereas, if $|x| \leq 4R$ the proof of (A.2) is complete using (A.1) as follows. Since $\frac{1}{2}(1+|x|) \leq 4R$ we have $\widehat{\nu}(x) \geq c_1$ for an appropriate constant $c_1 > 0$ depending on R and ν . Thus we

conclude

$$|L\varphi(x)| \leq 4\Theta\|\varphi\|_{C_b^2(\mathbb{R}^d)} \leq c_1^{-1}4\Theta\|\varphi\|_{C_b^2(\mathbb{R}^d)}\widehat{\nu}(x)$$

with $\Theta = \int_{\mathbb{R}^d}(1 \wedge |h|^2)\nu(h)dh$. Note that in case of the fractional Laplace operator the estimate (A.2) is analogous to [FW12, Lemma 2.1]. Finally, (A.2) yields

$$|(u, L\varphi)_{L^2(\mathbb{R}^d)}| \leq C\|\varphi\|_{C_b^2(\mathbb{R}^d)} \int_{\mathbb{R}^d} |u(x)|\widehat{\nu}(x)dx$$

This shows that Lu is a distribution when $u \in L^1(\mathbb{R}^d; \widehat{\nu})$. With regard to (iii) let $\Omega \subset \mathbb{R}^d$ be open and bounded. We show that the embedding $V_\nu(\Omega | \mathbb{R}^d) \hookrightarrow L^1(\mathbb{R}^d; \widehat{\nu})$ is continuous under the additional scaling assumption (2.5). Indeed, for $u \in V_\nu(\Omega | \mathbb{R}^d)$ we assume $\Omega \subset B_R(0)$ for some $R \geq 1$. Then $|x - y| \leq R(1 + |x|)$ for all $x \in \mathbb{R}^d$ and all $y \in \Omega$ so that by (2.5) and Definition 2.4 we deduce $\widehat{\nu}(x) \leq C\nu(R(1 + |x|)) \leq cC\nu(x - y)$. Here $c, C > 0$ are constants independent of x and y . Proceeding as in Lemma 2.16, one arrives at the estimate

$$\int_{\mathbb{R}^d} |u(x)|\widehat{\nu}(x)dx \leq C\|u\|_{V_\nu(\Omega | \mathbb{R}^d)}.$$

Therefore, regarding the preceding arguments Lu is also a distribution whenever $u \in V_\nu(\Omega | \mathbb{R}^d)$. \square

A.2. Gauss-Green type formula. Having at hand a nonlocal analog of the normal derivative as in Definition 4.1, it makes sense to study a formula that resembles the classical Gauss-Green formula. Such formulas have been established in several contexts. See [DGLZ13] for numerous identities of a nonlocal vector calculus in the case of bounded kernels and [DROV17] for the case of the fractional Laplace operator. Recall the classical Gauss-Green formula (see [Neč67, Chap 3], [Tri92, Appendix A.3] or [BF13, Theorem III.1.8]) says for all $u \in H^2(\Omega)$ and $v \in H^1(\Omega)$,

$$\int_{\Omega} (-\Delta)u(x)v(x) dx = \int_{\Omega} \nabla u(x) \cdot \nabla v(x) dx - \int_{\partial\Omega} \gamma_1 u(x)\gamma_0 v(x) d\sigma(x). \quad (\text{A.3})$$

A reasonable explanation to this terminology is given in the Lemma 5.3. For a function $u \in C_b^1(\mathbb{R}^d)$ we know

$$|u(x) - u(y)| \leq 2\|u\|_{C_b^1(\mathbb{R}^d)}(1 \wedge |x - y|) \quad (x, y \in \mathbb{R}^d), \quad (\text{A.4})$$

which implies

$$\iint_{(\Omega^c \times \Omega^c)^c} (u(x) - u(y))^2 \nu(x - y) dx dy \leq 8\|u\|_{C_b^1(\mathbb{R}^d)}^2 \iint_{\Omega \mathbb{R}^d} (1 \wedge |x - y|^2) \nu(x - y) dx dy < \infty.$$

Proposition A.5 (Gauss-Green type formula). *Let Ω be open and bounded. For $u \in C_b^2(\mathbb{R}^d)$ and $v \in C_b^1(\mathbb{R}^d)$*

$$\int_{\Omega} [Lu(x)]v(x)dx = \mathcal{E}(u, v) - \int_{\Omega^c} \mathcal{N}u(y)v(y)dy. \quad (\text{A.5})$$

In particular, by choosing $v = 1$ one deduces

$$\int_{\Omega} Lu(x)dx = - \int_{\Omega^c} \mathcal{N}u(y)dy. \quad (\text{A.6})$$

Proof. Let $u \in C_b^2(\mathbb{R}^d)$ and $v \in C_b^1(\mathbb{R}^d)$. With the aid of [Proposition A.1](#) we can write

$$\begin{aligned} \int_{\Omega} [Lu(x)]v(x)dx &= \lim_{\varepsilon \rightarrow 0} \int_{\Omega} v(x)dx \int_{\mathbb{R}^d \setminus B_{\varepsilon}(x)} ((u(x) - u(y))\nu(x-y) dy \\ &= \lim_{\varepsilon \rightarrow 0} \int_{\Omega} \int_{\Omega \setminus B_{\varepsilon}(x)} (u(x) - u(y))v(x)\nu(x-y) dydx + \int_{\Omega} \int_{\Omega^c} (u(x) - u(y))v(x)\nu(x-y) dydx \end{aligned}$$

On one side, by a symmetry argument we have

$$\begin{aligned} \lim_{\varepsilon \rightarrow 0} \int_{\Omega} \int_{\Omega \setminus B_{\varepsilon}(x)} (u(x) - u(y))v(x)\nu(x-y) dydx &= \lim_{\varepsilon \rightarrow 0} \iint_{\Omega \times \Omega \cap \{|x-y| > \varepsilon\}} (u(x) - u(y))v(x)\nu(x-y) dydx \\ &= \lim_{\varepsilon \rightarrow 0} \frac{1}{2} \iint_{\Omega \times \Omega \cap \{|x-y| > \varepsilon\}} (u(x) - u(y))(v(x) - v(y))\nu(x-y) dydx \\ &= \frac{1}{2} \iint_{\Omega \Omega} (u(x) - u(y))(v(x) - v(y))\nu(x-y) dydx \end{aligned}$$

where one gets rid of the principal value using the estimate [\(A.4\)](#) applied to u and v . On the other side, with the help of Fubini's Theorem we have

$$\begin{aligned} &\iint_{\Omega \Omega^c} (u(x) - u(y))v(x)\nu(x-y) dydx \\ &= \iint_{\Omega \Omega^c} (u(x) - u(y))(v(x) - v(y))\nu(x-y) dydx + \int_{\Omega^c} v(y)dy \int_{\Omega} (u(x) - u(y))\nu(x-y) dx \\ &= \frac{1}{2} \iint_{\Omega \Omega^c} (u(x) - u(y))(v(x) - v(y))\nu(x-y) dydx + \frac{1}{2} \iint_{\Omega^c \Omega} (u(x) - u(y))(v(x) - v(y))\nu(x-y) dydx \\ &\quad - \int_{\Omega^c} \mathcal{N}u(y)v(y)dy. \end{aligned}$$

Altogether inserted in the initial relation provide the desired relation. \square

As a direct consequence of [Proposition A.5](#) we have the following.

Corollary A.6 (Second Gauss-Green identity). *For all $u, v \in C_b^2(\mathbb{R}^d)$ we have*

$$\int_{\Omega} v(x)Lu(x) - u(x)Lv(x) dx = \int_{\Omega^c} u(y)\mathcal{N}v(y) - v(y)\mathcal{N}u(y) dy. \quad (\text{A.7})$$

We now look at certain aspect of the dual of the trace space $T_{\nu}(\Omega^c)$ in relation with the nonlocal normal derivative operator \mathcal{N} .

Theorem A.7. *For any linear continuous form $\ell : T_{\nu}(\Omega^c) \rightarrow \mathbb{R}$ there exists a function $w \in V_{\nu}(\Omega | \mathbb{R}^d)$ such that for every $v \in C_c^{\infty}(\overline{\Omega^c})$*

$$\ell(v) = \int_{\Omega^c} \mathcal{N}w(y)v(y)dy.$$

In particular, given a measurable function $g : \Omega^c \rightarrow \mathbb{R}$ if the linear mapping $\ell_g : v \mapsto \int_{\Omega^c} g(y)v(y)dy$ is continuous on $T_\nu(\Omega^c)$ then, there exists $w \in V_\nu(\Omega | \mathbb{R}^d)$ such that $g = \mathcal{N}w$ almost everywhere on Ω^c .

Proof. Let $\ell \in T_\nu(\Omega^c)'$ then because of the continuity of the trace operator Tr , the linear form $\ell \circ \text{Tr}$ is also continuous on $V_\nu(\Omega | \mathbb{R}^d)$. By Riesz's representation theorem there exists $w \in V_\nu(\Omega | \mathbb{R}^d)$ such that $\ell \circ \text{Tr}(v) = (v, w)_{(V_\nu(\Omega | \mathbb{R}^d))}$ for each $v \in V_\nu(\Omega | \mathbb{R}^d)$. In particular, for $v \in C_c^\infty(\overline{\Omega}^c)$ identified with its zero extension on Ω so that $\text{Tr}(v) = v$, we remain with

$$\begin{aligned} \ell(v) &= \int_{\Omega} w(x)v(x)dx + \frac{1}{2} \iint_{(\Omega^c \times \Omega^c)^c} (w(x) - w(y))(v(x) - v(y))\nu(x-y) dx dy \\ &= \int_{\Omega^c} v(y)dy \int_{\Omega} (w(y) - w(x))\nu(x-y) dx = \int_{\Omega^c} \mathcal{N}w(y)v(y)dy. \end{aligned}$$

Furthermore, if $g : \Omega^c \rightarrow \mathbb{R}$ is such that ℓ_g is continuous on $T_\nu(\Omega^c)$ then by the above computation, it follows that $g = \mathcal{N}w$ almost everywhere on Ω^c since

$$\int_{\Omega^c} g(y)v(y)dy = \int_{\Omega^c} \mathcal{N}w(y)v(y)dy \quad \text{for all } v \in C_c^\infty(\overline{\Omega}^c).$$

□

Remark A.8. The second statement of [Theorem A.7](#) particularly suggests that the space of all measurable functions $g : \Omega^c \rightarrow \mathbb{R}$ for which linear the form $v \mapsto \int_{\Omega^c} g(y)v(y)dy$ is continuous on $T_\nu(\Omega^c)$ is contained in $\mathcal{N}(V_\nu(\Omega | \mathbb{R}^d))$ (the range of \mathcal{N}).

Remark A.9. The nonlocal normal derivative $\mathcal{N}u$ of a function measurable $u : \mathbb{R}^d \rightarrow \mathbb{R}$ can be thought of as the restriction of the regional operator on Ω associated with $k(x, y) = \nu(x - y)$ on $\mathbb{R}^d \setminus \Omega$. It might be interesting to know some situations where the pointwise definition $\mathcal{N}u(x)$ makes sense at least almost everywhere. It is straightforward to verify the following: (i) if $u \in L^\infty(\Omega)$ then $\mathcal{N}u(x)$ exists for almost every $x \in \mathbb{R}^d \setminus \overline{\Omega}$. (ii) if $u \in V_\nu(\Omega | \mathbb{R}^d) \cap L_{\text{loc}}^2(\mathbb{R}^d)$ then $u \in L_{\text{loc}}^2(\mathbb{R}^d \setminus \overline{\Omega})$, (iii) If $u \in V_\nu(\Omega | \mathbb{R}^d)$ and ν is unimodal with full support then $u \in L_{\text{loc}}^2(\mathbb{R}^d \setminus \overline{\Omega})$ (in particular if $\nu(h) = |h|^{-d-\alpha}$, $\alpha \in (0, 2)$), (iv) more generally, if $u \in V_\nu(\Omega | \mathbb{R}^d)$ then $u \in L^2(\mathbb{R}^d \setminus \overline{\Omega}, w^{-1}(x)dx)$ where $w(x) = \int_{\Omega} \nu(x - y)dy$, $x \in \mathbb{R}^d \setminus \Omega$.

REFERENCES

- [Aba20] Nicola Abatangelo. A remark on nonlocal Neumann conditions for the fractional Laplacian. *Arch. Math. (Basel)*, 114(6):699–708, 2020. [4](#)
- [AFNRO20] Alessandro Audrito, Juan-Carlos Felipe-Navarro, and Xavier Ros-Oton. The Neumann problem for the fractional Laplacian: regularity up to the boundary. *arXiv preprint arXiv:2006.10026*, 2020. [3](#), [4](#)
- [ATL20] Claudianor O. Alves and César E. Torres Ledesma. Fractional elliptic problem in exterior domains with nonlocal Neumann condition. *Nonlinear Anal.*, 195:111732, 29, 2020. [4](#)
- [Bar09] Simona Barb. *Topics in geometric analysis with applications to partial differential equations*. PhD thesis, University of Missouri-Columbia, <https://mospace.umsystem.edu/xmlui/handle/10355/9670>, 2009. [22](#)
- [BBM01] Jean Bourgain, Haim Brezis, and Petru Mironescu. Another look at Sobolev spaces. In *Optimal control and partial differential equations*, pages 439–455. IOS, Amsterdam, 2001. [44](#)

- [BF13] Franck Boyer and Pierre Fabrie. *Mathematical Tools for the Study of the Incompressible Navier-Stokes Equations and Related Models*, volume 183. Springer Science & Business Media, 2013. [47](#)
- [BGPR20] Krzysztof Bogdan, Tomasz Grzywny, Katarzyna Pietruska-Pauba, and Artur Rutkowski. Extension and trace for nonlocal operators. *J. Math. Pures Appl. (9)*, 137:33–69, 2020. [2](#), [10](#), [16](#), [17](#)
- [BM14] José C. Bellido and Carlos Mora-Corral. Existence for nonlocal variational problems in peridynamics. *SIAM J. Math. Anal.*, 46(1):890–916, 2014. [5](#)
- [BMCP15] José C. Bellido, Carlos Mora-Corral, and Pablo Pedregal. Hyperelasticity as a Γ -limit of peridynamics when the horizon goes to zero. *Calc. Var. Partial Differential Equations*, 54(2):1643–1670, 2015. [5](#), [40](#), [43](#)
- [BMPS18] Begoña Barrios, Luigi Montoro, Ireneo Peral, and Fernando Soria. Neumann conditions for the higher order s -fractional laplacian $(-\Delta)^s u$ with $s > 1$. *Nonlinear Analysis*, 2018. [4](#)
- [Bre10] Haim Brezis. *Functional analysis, Sobolev spaces and partial differential equations*. Springer Science & Business Media, 2010. [23](#)
- [BS21] Sabri Bahrouni and Ariel M. Salort. Neumann and Robin type boundary conditions in fractional Orlicz-Sobolev spaces. *ESAIM Control Optim. Calc. Var.*, 27(suppl.):Paper No. S15, 23, 2021. [4](#)
- [BT10] Aksoylu Burak and Mengesha Tadele. Results on nonlocal boundary value problems. *Numer. Funct. Anal. Optim.*, 31(12):1301–1317, 2010. [5](#)
- [BV16] Claudia Bucur and Enrico Valdinoci. *Nonlocal diffusion and applications*, volume 20 of *Lecture Notes of the Unione Matematica Italiana*. Springer, [Cham]; Unione Matematica Italiana, Bologna, 2016. [3](#)
- [CC20] Eleonora Cinti and Francesca Colasuonno. A nonlocal supercritical Neumann problem. *J. Differential Equations*, 268(5):2246–2279, 2020. [4](#)
- [CDP18] Ernesto Correa and Arturo De Pablo. Nonlocal operators of order near zero. *Journal of Mathematical Analysis and Applications*, 461(1):837–867, 2018. [20](#)
- [CF12] Zhen-Qing Chen and Masatoshi Fukushima. *Symmetric Markov processes, time change, and boundary theory*, volume 35 of *London Mathematical Society Monographs Series*. Princeton University Press, Princeton, NJ, 2012. [10](#)
- [Che18] Guoyuan Chen. Singularly perturbed Neumann problem for fractional Schrödinger equations. *Sci. China Math.*, 61(4):695–708, 2018. [4](#)
- [CS07] Luis Caffarelli and Luis Silvestre. An extension problem related to the fractional Laplacian. *Comm. Partial Differential Equations*, 32(7-9):1245–1260, 2007. [3](#)
- [CS20] Jamil Chaker and Luis Silvestre. Coercivity estimates for integro-differential operators. *Calc. Var. Partial Differential Equations*, 59(4):Paper No. 106, 20, 2020. [30](#)
- [DGLZ12] Qiang Du, Max Gunzburger, Richard B Lehoucq, and Kun Zhou. Analysis and approximation of nonlocal diffusion problems with volume constraints. *SIAM review*, 54(4):667–696, 2012. [2](#)
- [DGLZ13] Qiang Du, Max Gunzburger, R. B. Lehoucq, and Kun Zhou. A nonlocal vector calculus, nonlocal volume-constrained problems, and nonlocal balance laws. *Math. Models Methods Appl. Sci.*, 23(3):493–540, 2013. [47](#)
- [Din96] Zhonghai Ding. A proof of the trace theorem of sobolev spaces on lipschitz domains. *Proceedings of the American Mathematical Society*, 124(2):591–600, 1996. [16](#)
- [DK20] Bartłomiej Dyda and Moritz Kassmann. Regularity estimates for elliptic nonlocal operators. *Anal. PDE*, 13(2):317–370, 2020. [2](#), [16](#), [19](#), [30](#)
- [DK21a] Bartłomiej Dyda and Michał Kijaczko. On density of compactly supported smooth functions in fractional Sobolev spaces. *Annali di Matematica Pura ed Applicata (1923-)*, pages 1–13, 2021. [29](#)
- [DK21b] Bartłomiej Dyda and Michał Kijaczko. On density of smooth functions in weighted fractional Sobolev spaces. *Nonlinear Anal.*, 205:Paper No. 112231, 10, 2021. [10](#)
- [DLV21] Serena Dipierro, Edoardo Proietti Lippi, and Enrico Valdinoci. (non) local logistic equations with neumann conditions. *arXiv preprint arXiv:2101.02315*, 2021. [33](#)
- [DMT18] Qiang Du, Tadele Mengesha, and Xiaochuan Tian. Nonlocal criteria for compactness in the space of L^p vector fields. *arXiv preprint arXiv:1801.08000*, 2018. [20](#)

- [DROV17] Serena Dipierro, Xavier Ros-Oton, and Enrico Valdinoci. Nonlocal problems with Neumann boundary conditions. *Rev. Mat. Iberoam.*, 33(2):377–416, 2017. [1](#), [2](#), [3](#), [4](#), [9](#), [31](#), [47](#)
- [DTWY21] Qiang Du, Xiaochuan Tian, Cory Wright, and Yue Yu. Nonlocal trace spaces and extension results for nonlocal calculus, 2021. [16](#)
- [DTZ22] Qiang Du, Xiaochuan Tian, and Zhi Zhou. Nonlocal diffusion models with consistent local and fractional limits. arXiv preprint arXiv:2203.00167, 2022. [1](#), [5](#), [31](#), [40](#), [41](#), [43](#)
- [Du19] Qiang Du. *Nonlocal modeling, analysis, and computation*, volume 94 of *CBMS-NSF Regional Conference Series in Applied Mathematics*. Society for Industrial and Applied Mathematics (SIAM), Philadelphia, PA, 2019. [5](#)
- [DV09] Jérôme Droniou and Juan-Luis Vázquez. Noncoercive convection-diffusion elliptic problems with Neumann boundary conditions. *Calc. Var. Partial Differential Equations*, 34(4):413–434, 2009. [2](#)
- [DY21] Marta D’Elia and Yue Yu. On the prescription of boundary conditions for nonlocal Poisson’s and peridynamics models. arXiv preprint arXiv:2107.04450, 2021. [5](#), [41](#)
- [FG20] Guy Fabrice Foghem Gounoue. *L²-theory for nonlocal operators on domains*. PhD thesis, PhD thesis, Bielefeld University, <https://doi.org/10.4119/unibi/2946033>, 2020. [2](#), [6](#), [9](#), [10](#), [13](#), [15](#), [41](#), [43](#), [44](#)
- [FKV15] Matthieu Felsinger, Moritz Kassmann, and Paul Voigt. The Dirichlet problem for nonlocal operators. *Math. Z.*, 279(3-4):779–809, 2015. [2](#), [3](#), [5](#), [7](#), [9](#), [10](#), [19](#), [28](#), [29](#), [38](#)
- [FKV20] Guy Fabrice Foghem Gounoue, Moritz Kassmann, and Paul Voigt. Mosco convergence of nonlocal to local quadratic forms. *Nonlinear Anal., Theory Methods Appl., Ser. A, Theory Methods*, 193(111504):22, 2020. Nonlocal and Fractional Phenomena. [9](#), [10](#), [13](#), [19](#), [40](#), [41](#), [42](#), [43](#)
- [Fog21a] Guy Foghem. Nonlocal Gagliardo-Nirenberg-Sobolev type inequality. <https://doi.org/10.48550/arXiv.2105.07989>, 2021. [15](#)
- [Fog21b] Guy Foghem. A remake on the Bourgain-Brezis-Mironescu characterization of Sobolev spaces. [arXiv-prints:https://arxiv.org/abs/2008.07631](https://arxiv.org/abs/2008.07631), 2021. [9](#), [15](#), [41](#), [42](#), [43](#)
- [FOT11] Masatoshi Fukushima, Yoichi Oshima, and Masayoshi Takeda. *Dirichlet forms and symmetric Markov processes*, volume 19 of *De Gruyter Studies in Mathematics*. Walter de Gruyter & Co., Berlin, extended edition, 2011. [14](#)
- [FSV15] Alessio Fiscella, Raffaella Servadei, and Enrico Valdinoci. Density properties for fractional Sobolev spaces. *Ann. Acad. Sci. Fenn. Math.*, 40(1):235–253, 2015. [10](#)
- [FW12] Mouhamed Moustapha Fall and Tobias Weth. Nonexistence results for a class of fractional elliptic boundary value problems. *J. Funct. Anal.*, 263(8):2205–2227, 2012. [47](#)
- [GA98] Karl Gustafson and Takehisa Abe. The third boundary condition—was it Robin’s? *Math. Intelligencer*, 20(1):63–71, 1998. [36](#)
- [Gri11] Pierre Grisvard. *Elliptic problems in nonsmooth domains*, volume 69 of *Classics in Applied Mathematics*. Society for Industrial and Applied Mathematics (SIAM), Philadelphia, PA, 2011. Reprint of the 1985 original [MR0775683], With a foreword by Susanne C. Brenner. [10](#)
- [GT15] David Gilbarg and Neil S Trudinger. *Elliptic partial differential equations of second order*. Springer, 2015. [22](#)
- [JW19] Sven Jarohs and Tobias Weth. Local compactness and nonvanishing for weakly singular nonlocal quadratic forms. *Nonlinear Analysis*, 2019. [20](#), [23](#), [28](#)
- [KMS19] Moritz Kassmann, Tadele Mengesha, and James Scott. Solvability of nonlocal systems related to peridynamics. *Commun. Pure Appl. Anal.*, 18(3):1303–1332, 2019. [5](#)
- [KS03] Kazuhiro Kuwae and Takashi Shioya. Convergence of spectral structures: a functional analytic theory and its applications to spectral geometry. *Comm. Anal. Geom.*, 11(4):599–673, 2003. [43](#)
- [Leo13] Giovanni Leoni. Partial differential equations. <http://giovannileoni.weebly.com/uploads/3/1/0/5/3105437> 2013. Lecture notes, Fall 2013, Carnegie Mellon University. [2](#)
- [LMP⁺18] Tommaso Leonori, Maria Medina, Ireneo Peral, Ana Primo, and Fernando Soria. Principal eigenvalue of mixed problem for the fractional Laplacian: moving the boundary conditions. *J. Differential Equations*, 265(2):593–619, 2018. [4](#)
- [MD15] Tadele Mengesha and Qiang Du. On the variational limit of a class of nonlocal functionals related to peridynamics. *Nonlinearity*, 28(11):3999, 2015. [40](#)

- [Mik78] V. P. Mikhailov. *Partial differential equations*. "Mir", Moscow; distributed by Imported Publications, Inc., Chicago, Ill., 1978. Translated from the Russian by P. C. Sinha. [2](#)
- [MPL19] Dimitri Mugnai and Edoardo Proietti Lippi. Neumann fractional p -Laplacian: eigenvalues and existence results. *Nonlinear Anal.*, 188:455–474, 2019. [1](#), [4](#), [33](#)
- [MPL21] Dimitri Mugnai and Edoardo Proietti Lippi. Linking over cones for the Neumann fractional p -Laplacian. *J. Differential Equations*, 271:797–820, 2021. [4](#)
- [Neč67] Jindřich Nečas. *Les méthodes directes en théorie des équations elliptiques*. Masson, 1967. [47](#)
- [NPV12] Eleonora Di Nezza, Giampiero Palatucci, and Valdinoci. Hitchhiker’s guide to the fractional Sobolev spaces. *Bulletin des Sciences Mathématiques*, 136(5):521 – 573, 2012. [2](#), [15](#), [41](#)
- [Pon04] Augusto C. Ponce. An estimate in the spirit of Poincaré’s inequality. *J. Eur. Math. Soc. (JEMS)*, 6(1):1–15, 2004. [26](#), [43](#), [44](#)
- [PZ17] Andrey Piatnitski and Elena Zhizhina. Periodic homogenization of nonlocal operators with a convolution-type kernel. *SIAM Journal on Mathematical Analysis*, 49(1):64–81, 2017. [23](#)
- [RO16] Xavier Ros-Oton. Nonlocal elliptic equations in bounded domains: a survey. *Publ. Mat.*, 60(1):3–26, 2016. [3](#)
- [SV14] Raffaella Servadei and Enrico Valdinoci. Weak and viscosity solutions of the fractional Laplace equation. *Publicacions matemàtiques*, 58(1):133–154, 2014. [2](#)
- [Tri92] Hans Triebel. *Higher analysis*, volume 93. Huthig Pub Limited, 1992. [47](#)
- [Von21] Zoran Vondraček. A probabilistic approach to a non-local quadratic form and its connection to the Neumann boundary condition problem. *Math. Nachr.*, 294(1):177–194, 2021. [4](#), [14](#), [19](#)
- [Zho15] Yuan Zhou. Fractional Sobolev extension and imbedding. *Trans. Amer. Math. Soc.*, 367(2):959–979, 2015. [21](#)

TECHNISCHE UNIVERSITÄT DRESDEN, FAKULTÄT FÜR MATHEMATIK, INSTITUT FÜR WISSENSCHAFTLICHES RECHNEN, ZELLESCHER WEG 23-25 01217, DRESDEN, GERMANY.

Email address: guy.foghem@tu-dresden.de

UNIVERSITÄT BIELEFELD, FAKULTÄT FÜR MATHEMATIK, POSTFACH 100131, 33501 BIELEFELD, GERMANY

Email address: moritz.kassmann@uni-bielefeld.de